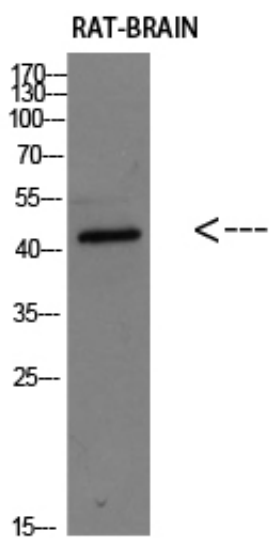




Corticotropin-releasing factor receptor 2 Polyclonal Antibody

Catalog_no :	AT5860
Applications :	WB,ELISA
Reactivity :	Human,Rat
Category :	抗原抗体
Size :	100µg/50µg/20µg
Gene_name :	CRHR2 CRF2R CRH2R
Protein_name :	Corticotropin-releasing factor receptor 2
Humangene_id	1395
:	
Humanswissprot	Q13324
_no :	
Immunogen :	Synthetic peptide from human protein at AA range: 221-295
Specificity :	The antibody detects endogenous Corticotropin-releasing factor receptor 2
Formulation :	Liquid in PBS containing 50% glycerol, 0.5% BSA and 0.02% sodium azide.
Source :	Rabbit
Dilution :	WB 1:500-2000, ELISA 1:10000-20000
Purification :	The antibody was affinity-purified from rabbit antiserum by affinity-chromatography using epitope-specific immunogen.
Concentration :	1 mg/ml
Storage_stability	-20°C/1 year
:	
Msds :	MSDS_Antibody.pdf
Other_name :	Corticotropin-releasing factor receptor 2 (CRF-R-2) (CRF-R2) (CRFR-2) (Corticotropin-releasing hormone receptor 2) (CRH-R-2) (CRH-R2)
Molecular Weight :	48KD

Product Images



Western blot analysis of RAT-BRAIN Cell Lysate, antibody was diluted at 1:1000. Secondary antibody was diluted at 1:20000