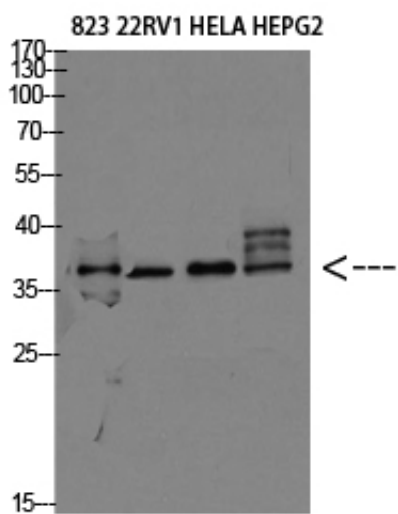




TMEPAI Polyclonal Antibody

Catalog_no :	<u>AT5861</u>
Applications :	<u>WB,ELISA</u>
Reactivity :	<u>Human</u>
Category :	<u>抗原抗体</u>
Size :	<u>100µg/50µg/20µg</u>
Gene_name :	<u>PMEPA1 STAG1 TMEPAI</u>
Protein_name :	<u>TMEPAI</u>
Humangene_id	<u>56937</u>
:	<u></u>
Humanswissprot	<u>Q969W9</u>
_no :	<u></u>
Immunogen :	<u>Synthetic peptide from human protein at AA range: 240-287</u>
Specificity :	<u>The antibody detects endogenous TMEPAI</u>
Formulation :	<u>Liquid in PBS containing 50% glycerol, 0.5% BSA and 0.02% sodium azide.</u>
Source :	<u>Rabbit</u>
Dilution :	<u>WB 1:500-2000, ELISA 1:10000-20000</u>
Purification :	<u>The antibody was affinity-purified from rabbit antiserum by affinity-chromatography using epitope-specific immunogen.</u>
Concentration :	<u>1 mg/ml</u>
Storage_stability	<u>-20°C/1 year</u>
:	<u></u>
Msds :	<u>MSDS_Antibody.pdf</u>
Other_name :	<u>Transmembrane prostate androgen-induced protein (Solid tumor-associated 1 protein)</u>
Molecular Weight :	<u>36KD</u>

Product Images



Western blot analysis of 823 22RV1 HELA HEPG2 Cell Lysate, antibody was diluted at 1:2000. Secondary antibody was diluted at 1:20000