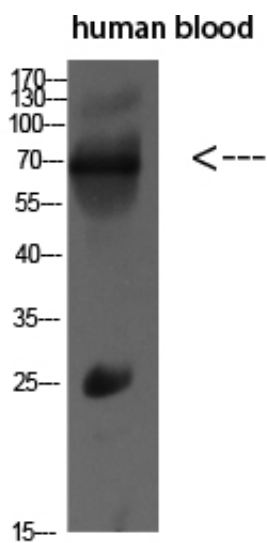




IL16 Polyclonal Antibody

Catalog_no :	AT5862
Applications :	WB,ELISA
Reactivity :	Human
Category :	抗原抗体
Size :	100µg/50µg/20µg
Gene_name :	IL16
Protein_name :	Pro-interleukin-16 [Cleaved into: Interleukin-16 (IL-16) (Lymphocyte chemoattractant factor) (LCF)]
Humangene_id :	3603
Humanswissprot_no :	Q14005
Immunogen :	Synthetic peptide from human protein at AA range: 900-960
Specificity :	The antibody detects endogenous IL16
Formulation :	Liquid in PBS containing 50% glycerol, 0.5% BSA and 0.02% sodium azide.
Source :	Rabbit
Dilution :	WB 1:500-2000, ELISA 1:10000-20000
Purification :	The antibody was affinity-purified from rabbit antiserum by affinity-chromatography using epitope-specific immunogen.
Concentration :	1 mg/ml
Storage_stability :	-20°C/1 year
Msds :	MSDS_Antibody.pdf
Other_name :	Pro-interleukin-16 [Cleaved into: Interleukin-16 (IL-16) (Lymphocyte chemoattractant factor) (LCF)]
Molecular Weight :	67KD

Product Images



Western blot analysis of MCF7 SW480 MOUSE-LIVER mouse-lung MOUSE-KIDNEY lysate, antibody was diluted at 500. Secondary antibody was diluted at 1:20000