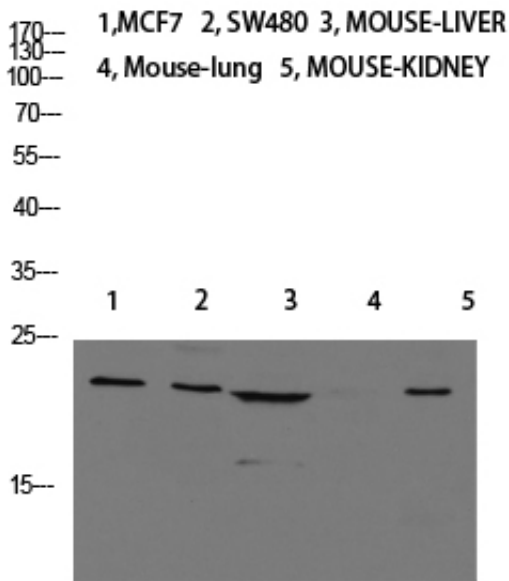




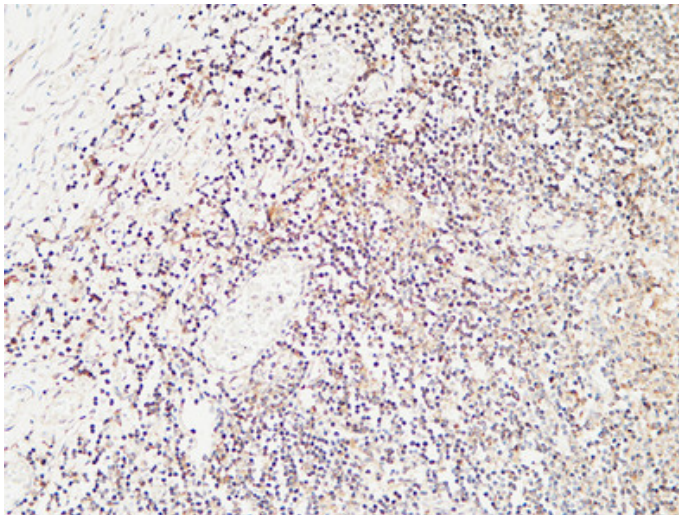
Calcitonin Polyclonal Antibody

Catalog_no :	AT5863
Applications :	WB,IHC-p,ELISA
Reactivity :	Human
Category :	抗原抗体
Size :	100µg/50µg/20µg
Gene_name :	CALCA CALC1
Protein_name :	Calcitonin [Cleaved into: Calcitonin; Katalcalcin (Calcitonin carboxyl-terminal peptide) (CCP) (PDN-21)]
Humangene_id :	796
Humanswissprot_no :	P01258
Immunogen :	Synthetic peptide from human protein at AA range: 80-141
Specificity :	The antibody detects endogenous Calcitonin
Formulation :	Liquid in PBS containing 50% glycerol, 0.5% BSA and 0.02% sodium azide.
Source :	Rabbit
Dilution :	IHC-p: 100-300.WB 1:500-2000, ELISA 1:10000-20000
Purification :	The antibody was affinity-purified from rabbit antiserum by affinity-chromatography using epitope-specific immunogen.
Concentration :	1 mg/ml
Storage_stability :	-20°C/1 year
Msds :	MSDS_Antibody.pdf
Other_name :	Calcitonin [Cleaved into: Calcitonin; Katalcalcin (Calcitonin carboxyl-terminal peptide) (CCP) (PDN-21)]
Molecular Weight :	16KD

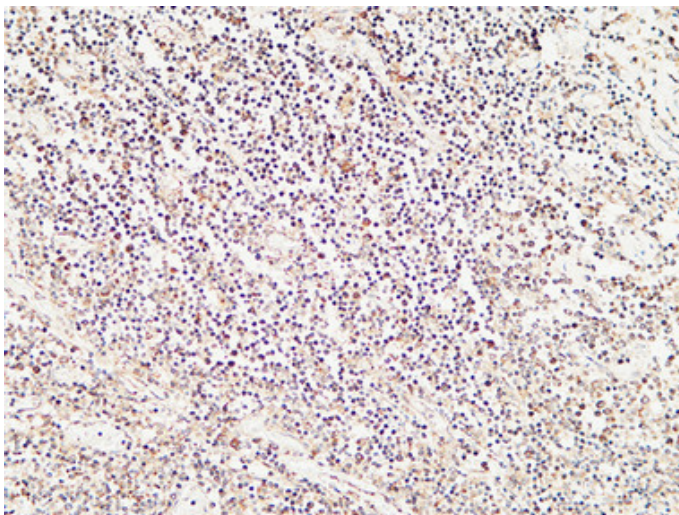
Product Images



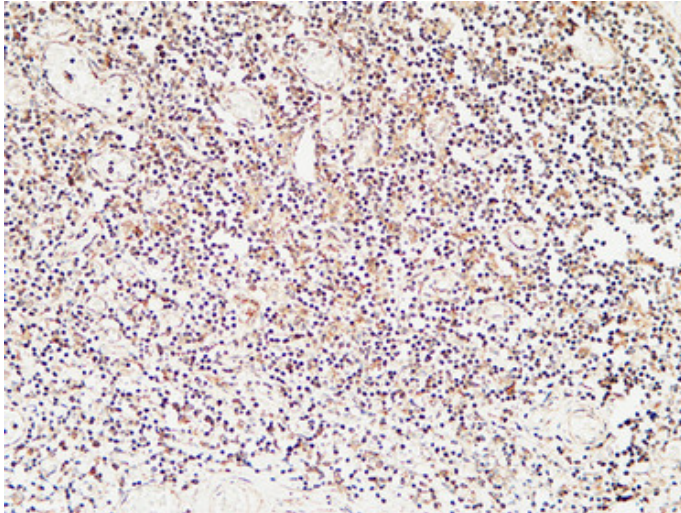
Western blot analysis of Jurkat U937 Raji mouse-eye lysate, antibody was diluted at 1000. Secondary antibody was diluted at 1:20000



Immunohistochemical analysis of paraffin-embedded Human Amygdala. 1, Antibody was diluted at 1:200(4°, overnight). 2, High-pressure and temperature EDTA, pH8.0 was used for antigen retrieval. 3, Secondary antibody was diluted at 1:200(room temperature, 30min).



Immunohistochemical analysis of paraffin-embedded Human Amygdala. 1, Antibody was diluted at 1:200(4°, overnight). 2, High-pressure and temperature EDTA, pH8.0 was used for antigen retrieval. 3, Secondary antibody was diluted at 1:200(room temperature, 30min).



Immunohistochemical analysis of paraffin-embedded Human Amygdala. 1, Antibody was diluted at 1:200(4°, overnight). 2, High-pressure and temperature EDTA, pH8.0 was used for antigen retrieval. 3, Secondary antibody was diluted at 1:200(room temperature, 30min).