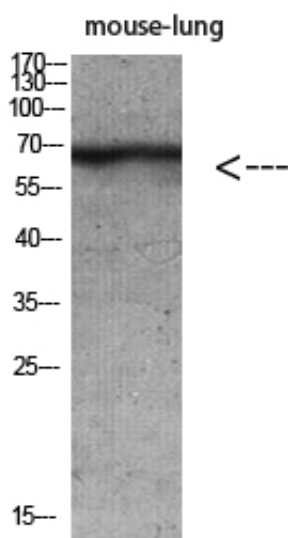




Keratin-pan Polyclonal Antibody

Catalog_no :	AT5870
Applications :	WB,ELISA
Reactivity :	Human,Mouse,Rat
Category :	抗原抗体
Size :	100µg/50µg/20µg
Gene_name :	Keratin
Protein_name :	Keratin
Humangene_id :	3849
Humanswissprot_no :	P35908/Q01546/P12035/P13647/P02538/P04259/P48668/Q3SY84/Q14CN4/Q86Y46/Q7R TS7/O95678/Q5XKE5/P08729/P05787/Q9NSB2
Immunogen :	Synthetic peptide from human protein at AA range: 150-220
Specificity :	The antibody detects endogenous Keratin-pan
Formulation :	Liquid in PBS containing 50% glycerol, 0.5% BSA and 0.02% sodium azide.
Source :	Rabbit
Dilution :	WB 1:500-2000, ELISA 1:10000-20000
Purification :	The antibody was affinity-purified from rabbit antiserum by affinity-chromatography using epitope-specific immunogen.
Concentration :	1 mg/ml
Storage_stability :	-20°C/1 year
Msds :	MSDS_Antibody.pdf
Molecular Weight :	70KD

Product Images



Western blot analysis of mouse-lung mouse-brain mouse-kidney mouse-heart lysate, antibody was diluted at 500. Secondary antibody was diluted at 1:20000