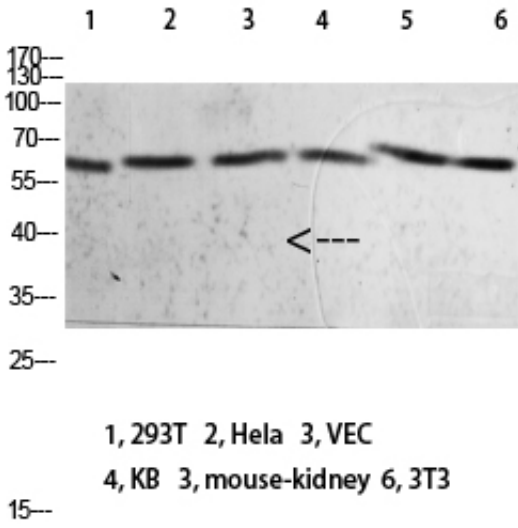


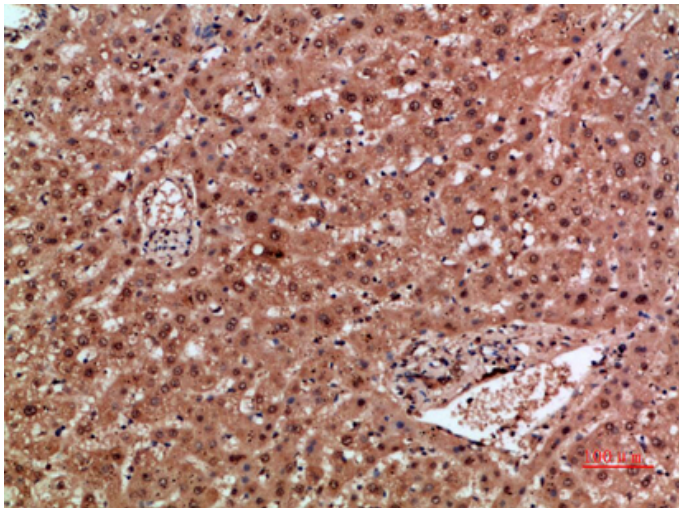
Mox1 Polyclonal Antibody

Catalog_no :	AT5871
Applications :	WB,IHC-p,ELISA
Reactivity :	Human,Mouse,Rat
Category :	抗原抗体
Size :	100µg/50µg/20µg
Gene_name :	NOX1 MOX1 NOH1
Protein_name :	NADPH oxidase 1 (NOX-1) (EC 1.-.-.) (Mitogenic oxidase 1) (MOX-1) (NADH/NADPH mitogenic oxidase subunit P65-MOX) (NOH-1)
Humangene_id :	27035
Humanswissprot_no :	Q9Y5S8
Immunogen :	Synthetic peptide from human protein at AA range: 210-260
Specificity :	The antibody detects endogenous Mox1
Formulation :	Liquid in PBS containing 50% glycerol, 0.5% BSA and 0.02% sodium azide.
Source :	Rabbit
Dilution :	WB 1:500-2000,IHC-p 1:500-200, ELISA 1:10000-20000
Purification :	The antibody was affinity-purified from rabbit antiserum by affinity-chromatography using epitope-specific immunogen.
Concentration :	1 mg/ml
Storage_stability :	-20°C/1 year
Msds :	MSDS_Antibody.pdf
Other_name :	NADPH oxidase 1 (NOX-1) (EC 1.-.-.) (Mitogenic oxidase 1) (MOX-1) (NADH/NADPH mitogenic oxidase subunit P65-MOX) (NOH-1)
Molecular Weight :	65KD

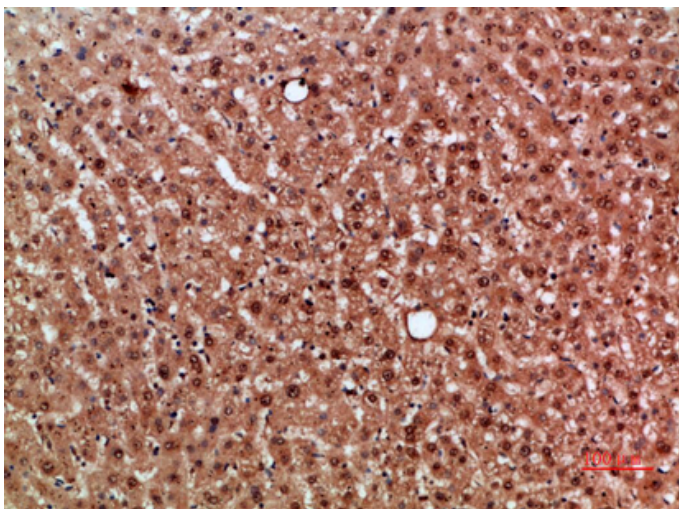
Product Images



Western blot analysis of 293T Hela VEC KB mouse-kidney 3T3 lysate, antibody was diluted at 2000. Secondary antibody was diluted at 1:20000

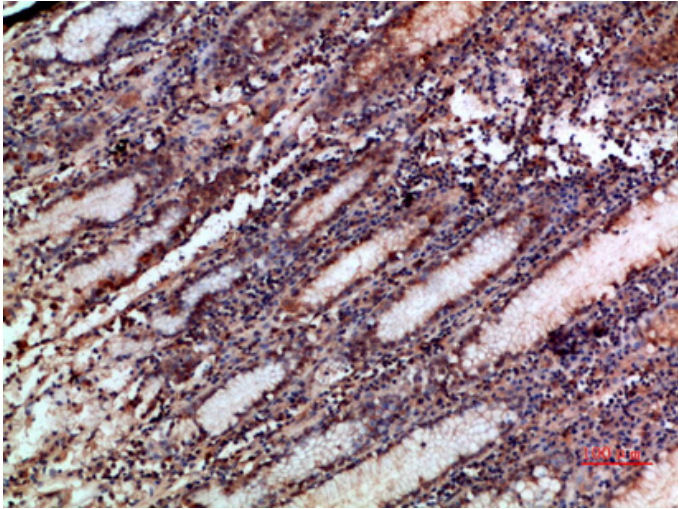


Immunohistochemical analysis of paraffin-embedded human-liver, antibody was diluted at 1:200

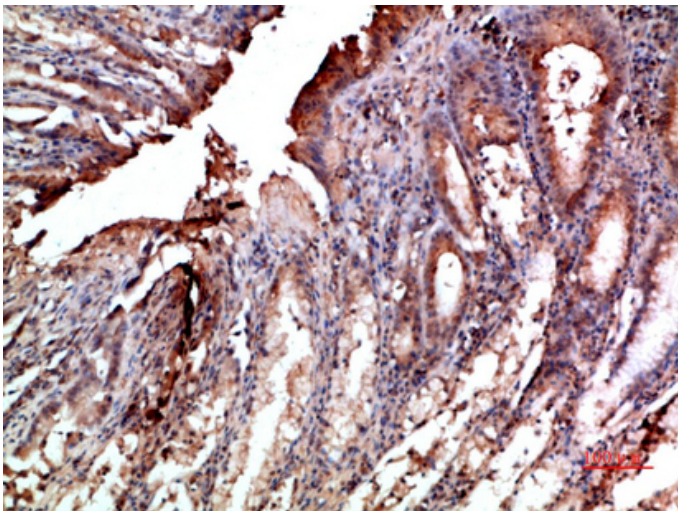


Immunohistochemical analysis of paraffin-embedded human-liver, antibody was diluted at 1:200

Immunohistochemical analysis of paraffin-embedded



human-stomach, antibody was diluted at 1:200



Immunohistochemical analysis of paraffin-embedded human-stomach, antibody was diluted at 1:200