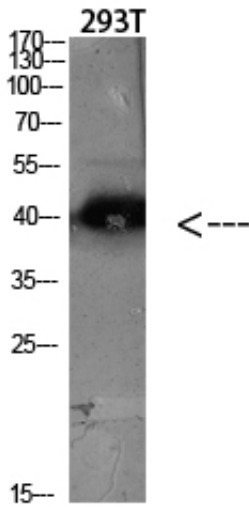


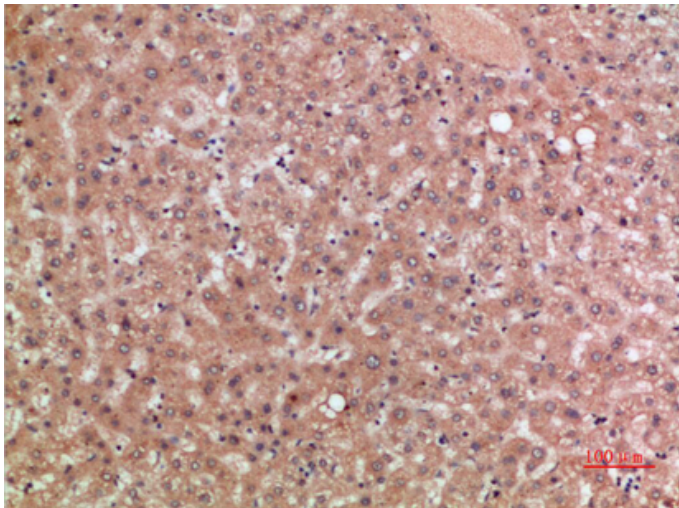
CKR-5 Polyclonal Antibody

Catalog_no :	AT5873
Applications :	WB,IHC-p,ELISA
Reactivity :	Human
Category :	抗原抗体
Size :	100µg/50µg/20µg
Gene_name :	CCR5 CMKBR5
Protein_name :	C-C chemokine receptor type 5 (C-C CKR-5) (CC-CKR-5) (CCR-5) (CCR5) (CHEMR13) (HIV-1 fusion coreceptor) (CD antigen CD195)
Humangene_id :	1234
Humanswissprot_no :	P51681
Immunogen :	Synthetic peptide from human protein at AA range: 151-200
Specificity :	The antibody detects endogenous CKR-5
Formulation :	Liquid in PBS containing 50% glycerol, 0.5% BSA and 0.02% sodium azide.
Source :	Rabbit
Dilution :	WB 1:500-2000,IHC-p 1:500-200, ELISA 1:10000-20000
Purification :	The antibody was affinity-purified from rabbit antiserum by affinity-chromatography using epitope-specific immunogen.
Concentration :	1 mg/ml
Storage_stability :	-20°C/1 year
Msds :	MSDS_Antibody.pdf
Other_name :	C-C chemokine receptor type 5 (C-C CKR-5) (CC-CKR-5) (CCR-5) (CCR5) (CHEMR13) (HIV-1 fusion coreceptor) (CD antigen CD195)
Molecular Weight :	40KD

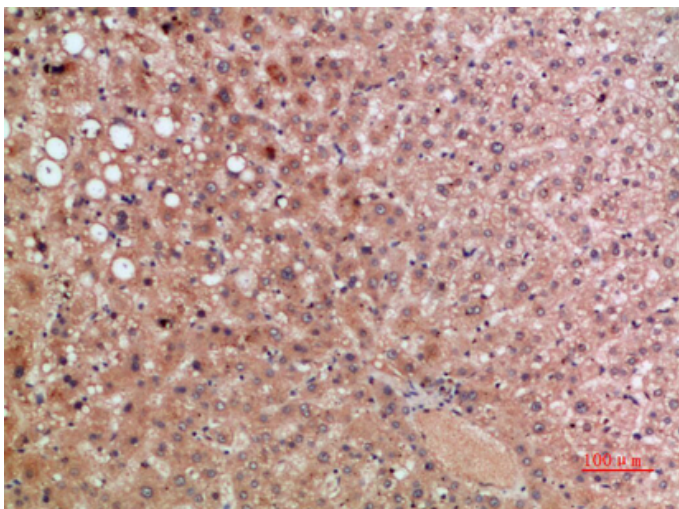
Product Images



Western blot analysis of HeLa lysate, antibody was diluted at 2000. Secondary antibody was diluted at 1:20000



Immunohistochemical analysis of paraffin-embedded human liver, antibody was diluted at 1:200



Immunohistochemical analysis of paraffin-embedded human liver, antibody was diluted at 1:200



专注二抗产品

Biodragon旗下品牌
