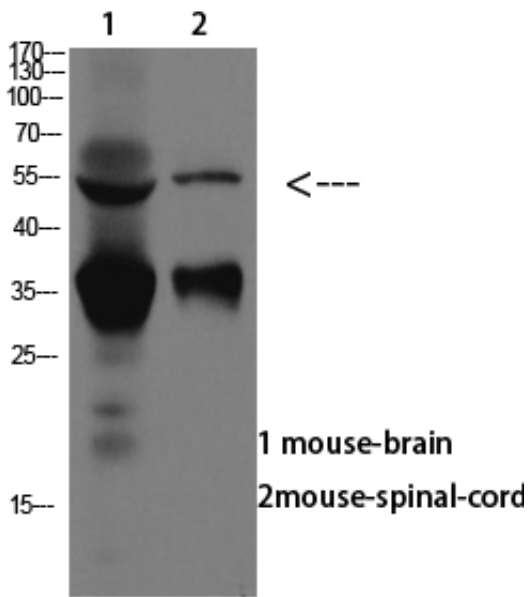


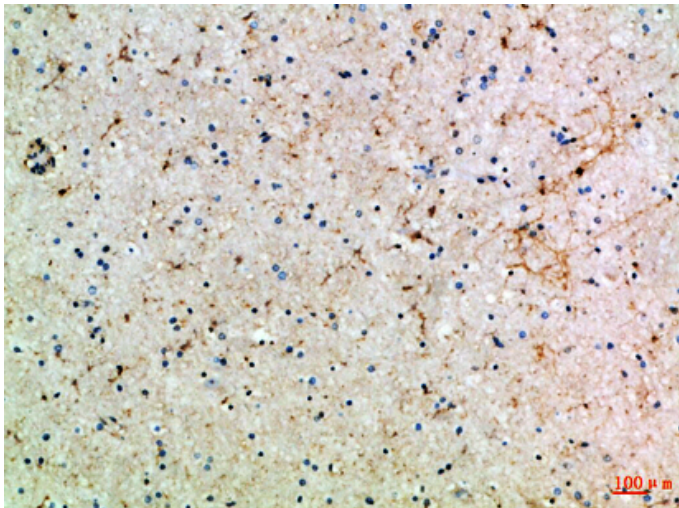
## ASIC1 Polyclonal Antibody

Catalog_no :	AT5875
Applications :	WB,IHC-p,ELISA
Reactivity :	Human,Mouse,Rat
Category :	抗原抗体
Size :	100µg/50µg/20µg
Gene_name :	ASIC1 ACCN2 BNaC2
Protein_name :	Acid-sensing ion channel 1 (ASIC1) (Amiloride-sensitive cation channel 2, neuronal) (Brain sodium channel 2) (BNaC2)
Humangene_id :	<a href="#">41</a>
Humanswissprot_no :	<a href="#">P78348</a>
Immunogen :	Synthetic peptide from human protein at AA range: 220-280
Specificity :	The antibody detects endogenous ASIC1
Formulation :	Liquid in PBS containing 50% glycerol, 0.5% BSA and 0.02% sodium azide.
Source :	Rabbit
Dilution :	WB 1:500-2000,IHC-p 1:500-200, ELISA 1:10000-20000
Purification :	The antibody was affinity-purified from rabbit antiserum by affinity-chromatography using epitope-specific immunogen.
Concentration :	1 mg/ml
Storage_stability :	-20°C/1 year
Msds :	MSDS_Antibody.pdf
Other_name :	Acid-sensing ion channel 1 (ASIC1) (Amiloride-sensitive cation channel 2, neuronal) (Brain sodium channel 2) (BNaC2)
Molecular Weight :	55KD

## Product Images



Western blot analysis of SW480 lysate, antibody was diluted at 1000. Secondary antibody was diluted at 1:20000



Immunohistochemical analysis of paraffin-embedded Human-brain, antibody was diluted at 1:100