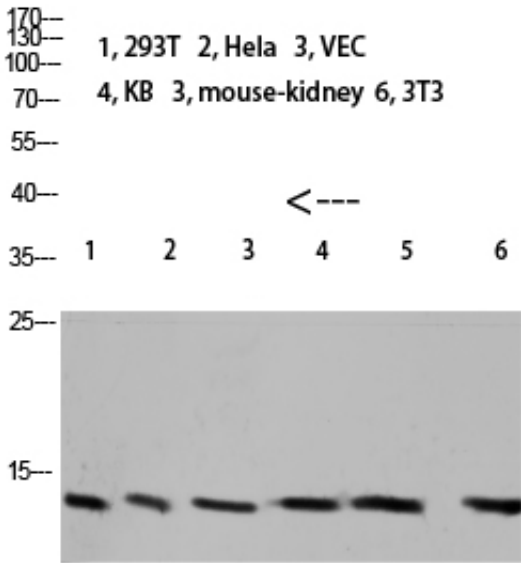


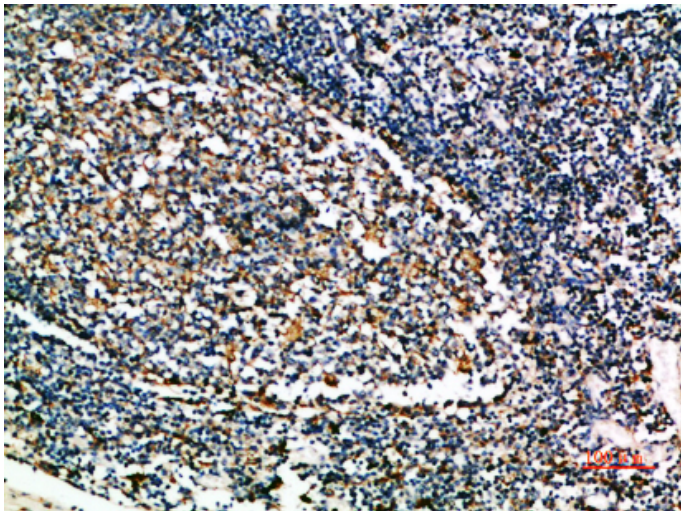
Cystatin A Polyclonal Antibody

Catalog_no :	AT5876
Applications :	WB,IHC-p,ELISA
Reactivity :	Human
Category :	抗原抗体
Size :	100µg/50µg/20µg
Gene_name :	CSTA STF1 STFA
Protein_name :	Cystatin-A (Cystatin-AS) (Stefin-A)
Humangene_id :	1475
Humanswissprot_no :	P01040
Immunogen :	Synthetic peptide from human protein at AA range: 60-98
Specificity :	The antibody detects endogenous Cystatin A
Formulation :	Liquid in PBS containing 50% glycerol, 0.5% BSA and 0.02% sodium azide.
Source :	Rabbit
Dilution :	WB 1:500-2000,IHC-p 1:500-200, ELISA 1:10000-20000
Purification :	The antibody was affinity-purified from rabbit antiserum by affinity-chromatography using epitope-specific immunogen.
Concentration :	1 mg/ml
Storage_stability :	-20°C/1 year
Msds :	MSDS_Antibody.pdf
Other_name :	Cystatin-A (Cystatin-AS) (Stefin-A)
Molecular Weight :	11KD

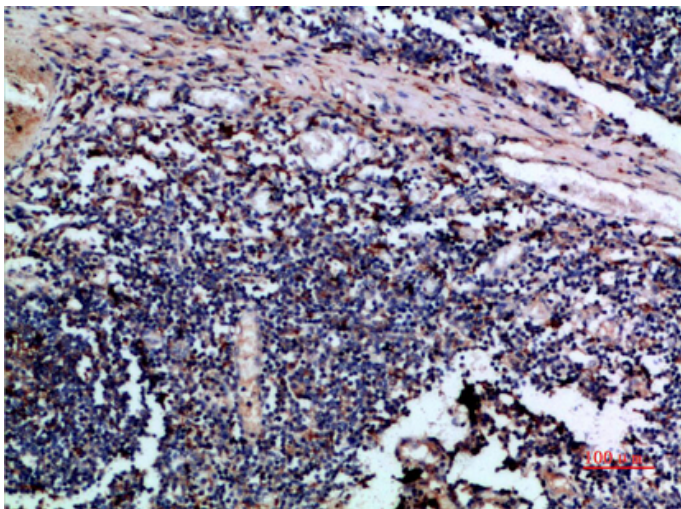
Product Images



Western blot analysis of 293T mouse-kidney lysate, antibody was diluted at 1000. Secondary antibody was diluted at 1:20000

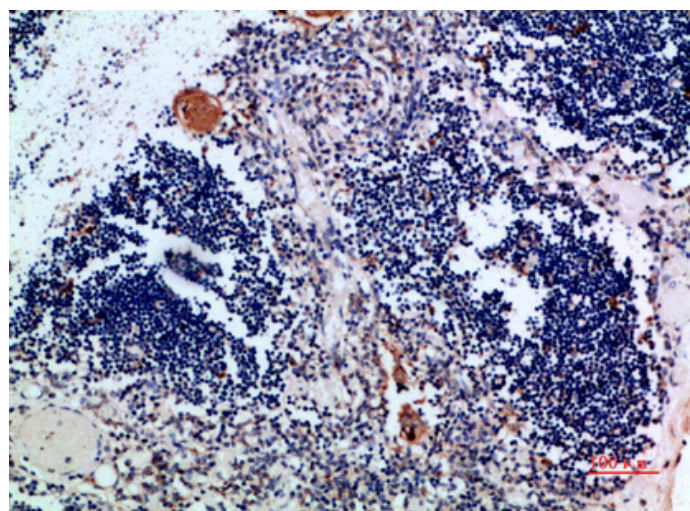


Immunohistochemical analysis of paraffin-embedded human-tonsil, antibody was diluted at 1:200



Immunohistochemical analysis of paraffin-embedded human-tonsil, antibody was diluted at 1:200

Immunohistochemical analysis of paraffin-embedded



human-thymus, antibody was diluted at 1:200