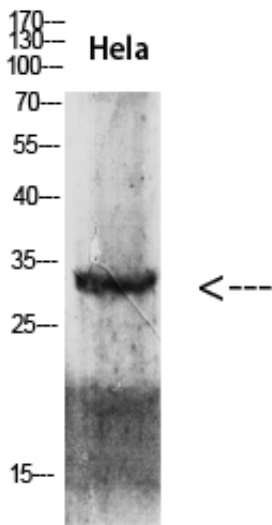




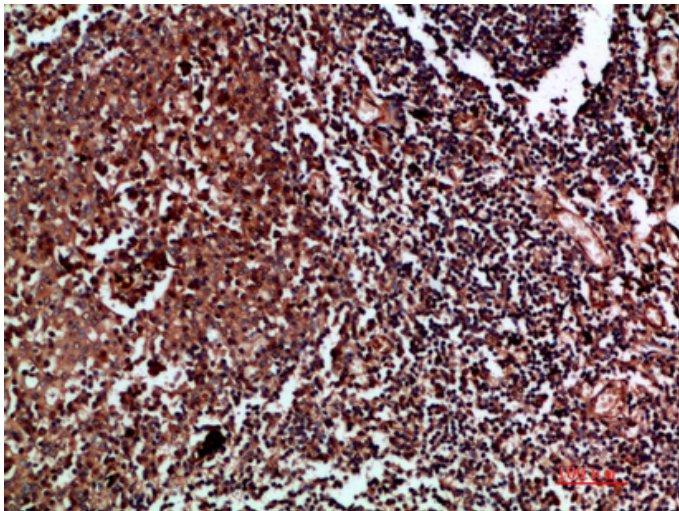
## Cdk6 Polyclonal Antibody

Catalog_no :	AT5884
Applications :	WB,IHC-p,ELISA
Reactivity :	Human
Category :	抗原抗体
Size :	100µg/50µg/20µg
Gene_name :	CDK6 CDKN6
Protein_name :	Cyclin-dependent kinase 6 (EC 2.7.11.22) (Cell division protein kinase 6) (Serine/threonine-protein kinase PLSTIRE)
Humangene_id :	<a href="#">1021</a>
Humanswissprot_no :	<a href="#">Q00534</a>
Immunogen :	Synthetic peptide from human protein at AA range: 280-325
Specificity :	The antibody detects endogenous Cdk6
Formulation :	Liquid in PBS containing 50% glycerol, 0.5% BSA and 0.02% sodium azide.
Source :	Rabbit
Dilution :	WB 1:500-2000,IHC-p 1:500-200, ELISA 1:10000-20000
Purification :	The antibody was affinity-purified from rabbit antiserum by affinity-chromatography using epitope-specific immunogen.
Concentration :	1 mg/ml
Storage_stability :	-20°C/1 year
Msds :	<a href="#">MSDS_Antibody.pdf</a>
Other_name :	Cyclin-dependent kinase 6 (EC 2.7.11.22) (Cell division protein kinase 6) (Serine/threonine-protein kinase PLSTIRE)
Molecular Weight :	34KD

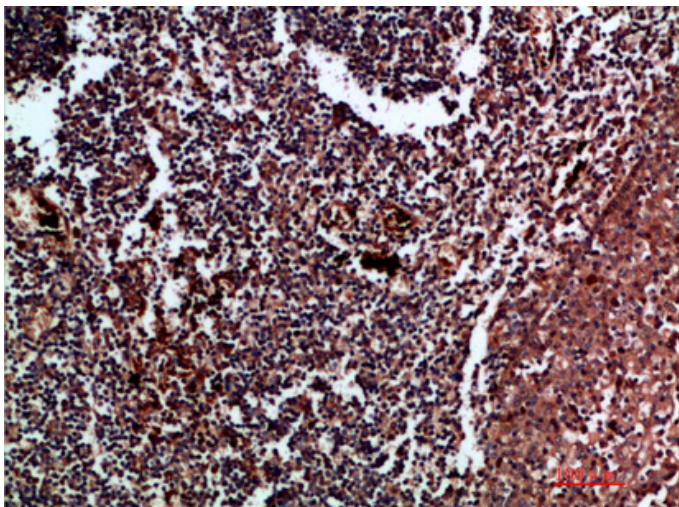
## Product Images



Western blot analysis of 293T HeLa lysate, antibody was diluted at 2000. Secondary antibody was diluted at 1:20000

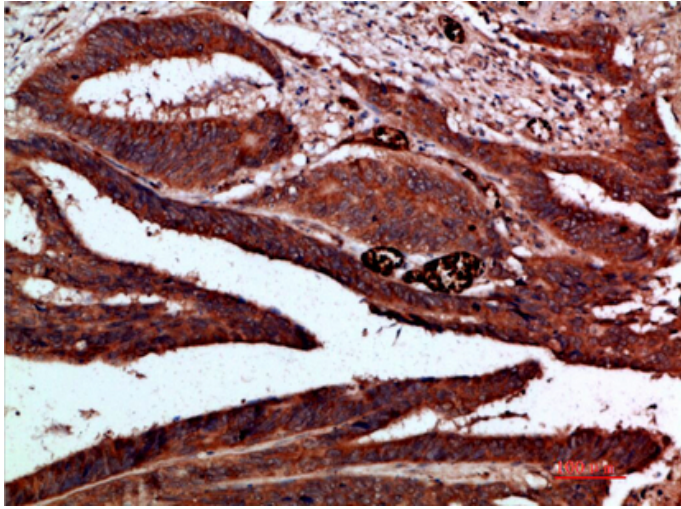


Immunohistochemical analysis of paraffin-embedded human tonsil, antibody was diluted at 1:200

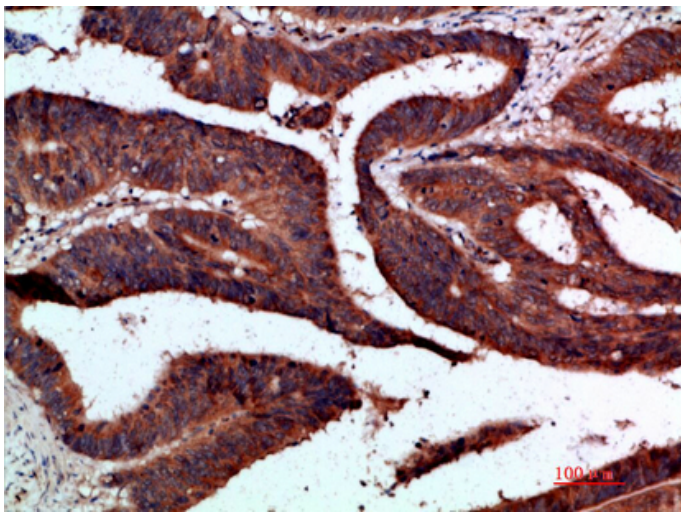


Immunohistochemical analysis of paraffin-embedded human tonsil, antibody was diluted at 1:200

Immunohistochemical analysis of paraffin-embedded human tonsil, antibody was diluted at 1:200



human-colon-cancer, antibody was diluted at 1:200



Immunohistochemical analysis of paraffin-embedded human-colon-cancer, antibody was diluted at 1:200