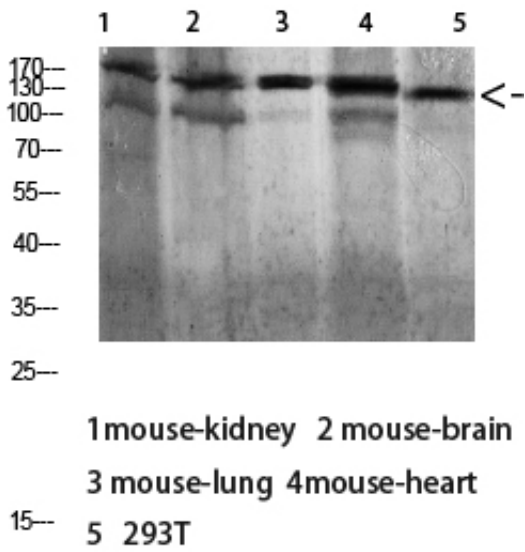


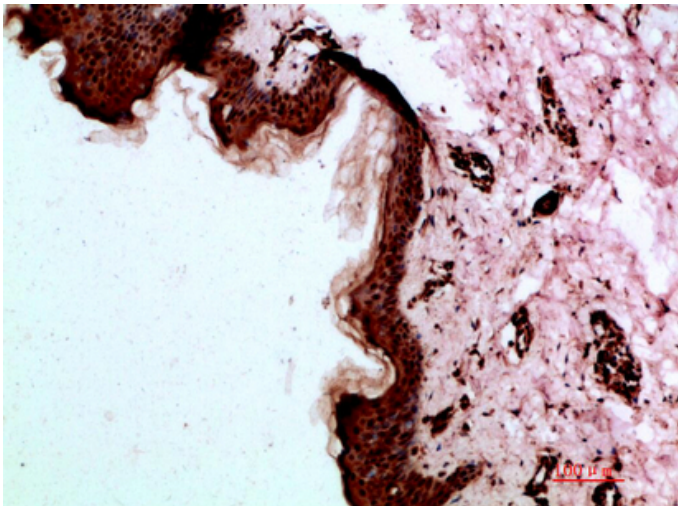
## Dsg1 Polyclonal Antibody

|                     |   |
|---------------------|---|
| Catalog_no :        | AT5886  |
| Applications :      | WB,IHC-p,ELISA  |
| Reactivity :        | Human,Mouse,Rat   |
| Category :          | 抗原抗体  |
| Size :              | 100µg/50µg/20µg   |
| Gene_name :         | DSG1 CDHF4  |
| Protein_name :      | Desmoglein-1 (Cadherin family member 4) (Desmosomal glycoprotein 1) (DG1) (DGI) (Pemphigus foliaceus antigen)         |
| Humangene_id :      | <a href="#">1828</a>  |
| Humanswissprot_no : | <a href="#">Q02413</a>  |
| Immunogen :         | Synthetic peptide from human protein at AA range: 30-90   |
| Specificity :       | The antibody detects endogenous Dsg1  |
| Formulation :       | Liquid in PBS containing 50% glycerol, 0.5% BSA and 0.02% sodium azide.   |
| Source :            | Rabbit  |
| Dilution :          | WB 1:500-2000,IHC-p 1:500-200, ELISA 1:10000-20000  |
| Purification :      | The antibody was affinity-purified from rabbit antiserum by affinity-chromatography using epitope-specific immunogen. |
| Concentration :     | 1 mg/ml   |
| Storage_stability : | -20°C/1 year  |
| Msds :              | MSDS_Antibody.pdf   |
| Other_name :        | Desmoglein-1 (Cadherin family member 4) (Desmosomal glycoprotein 1) (DG1) (DGI) (Pemphigus foliaceus antigen)         |
| Molecular Weight :  | 160KD   |

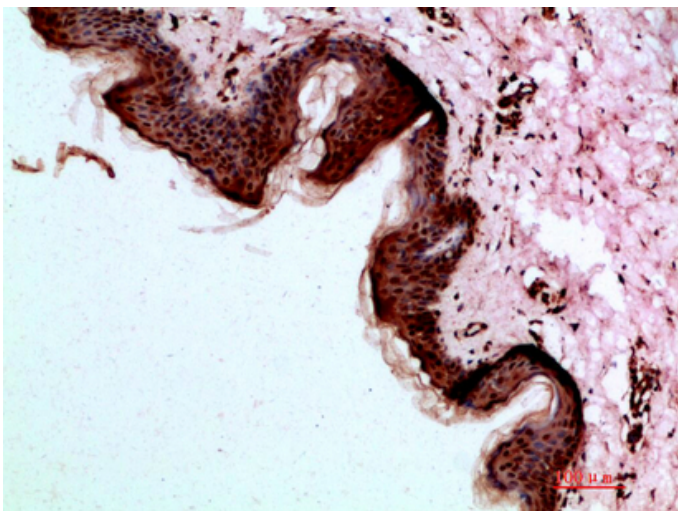
## Product Images



Western blot analysis of 293T lysate, antibody was diluted at 1000. Secondary antibody was diluted at 1:20000



Immunohistochemical analysis of paraffin-embedded human-skin, antibody was diluted at 1:200



Immunohistochemical analysis of paraffin-embedded human-skin, antibody was diluted at 1:200



**专注二抗产品**

Biodragon旗下品牌

---