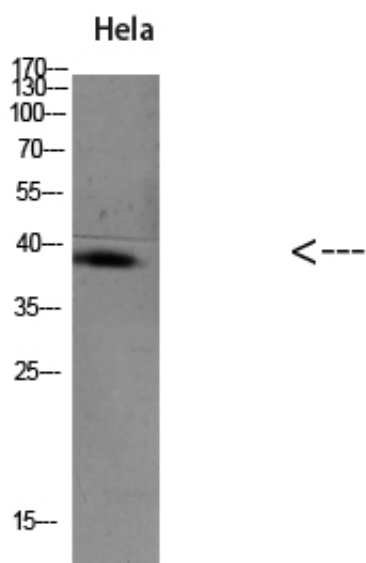


TIM-1 Polyclonal Antibody

Catalog_no :	AT5888
Applications :	WB,ELISA
Reactivity :	Human
Category :	抗原抗体
Size :	100µg/50µg/20µg
Gene_name :	HAVCR1 KIM1 TIM1 TIMD1
Protein_name :	Hepatitis A virus cellular receptor 1 (HAVcr-1) (Kidney injury molecule 1) (KIM-1) (T-cell immunoglobulin and mucin domain-containing protein 1) (TIMD-1) (T-cell membrane protein 1) (TIM-1) (TIM)
Humangene_id :	26762
Humanswissprot_no :	Q96D42
Immunogen :	Synthetic peptide from human protein at AA range: 40-100
Specificity :	The antibody detects endogenous TIM-1
Formulation :	Liquid in PBS containing 50% glycerol, 0.5% BSA and 0.02% sodium azide.
Source :	Rabbit
Dilution :	WB 1:500-2000, ELISA 1:10000-20000
Purification :	The antibody was affinity-purified from rabbit antiserum by affinity-chromatography using epitope-specific immunogen.
Concentration :	1 mg/ml
Storage_stability :	-20°C/1 year
Msds :	MSDS_Antibody.pdf
Other_name :	Hepatitis A virus cellular receptor 1 (HAVcr-1) (Kidney injury molecule 1) (KIM-1) (T-cell immunoglobulin and mucin domain-containing protein 1) (TIMD-1) (T-cell membrane protein 1) (TIM-1) (TIM)
Molecular Weight :	39KD

Product Images



Western blot analysis of KB Hela 293T mouse-brain lysate, antibody was diluted at 1000. Secondary antibody was diluted at 1:20000