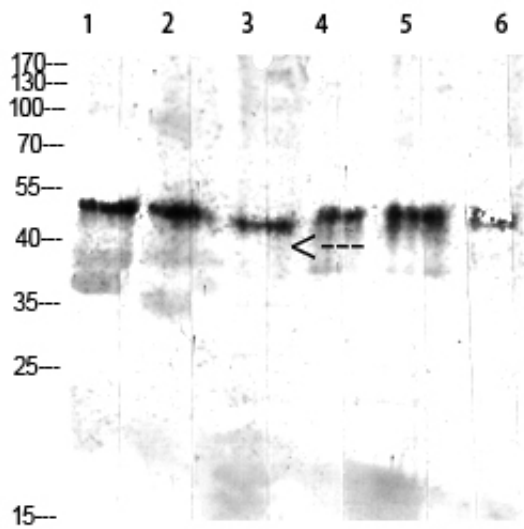




## CD64 Polyclonal Antibody

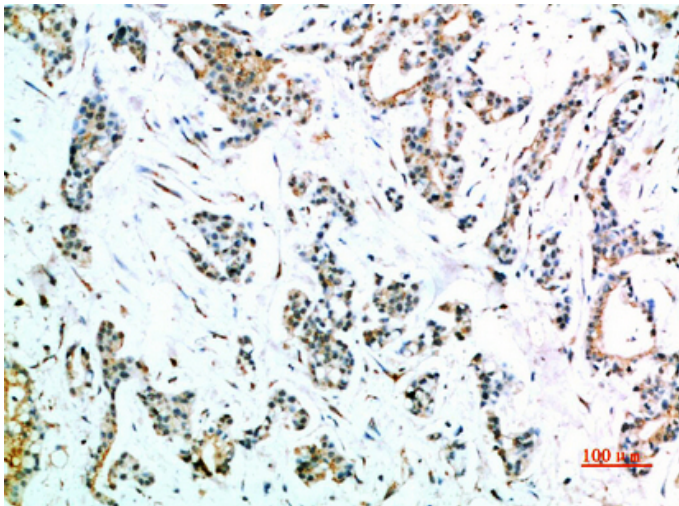
Catalog_no :	<u>AT5889</u>
Applications :	<u>WB,IHC-p,ELISA</u>
Reactivity :	<u>Human</u>
Category :	<u>抗原抗体</u>
Size :	<u>100µg/50µg/20µg</u>
Gene_name :	<u>FCGR1A FCG1 FCGR1 IGFR1</u>
Protein_name :	<u>High affinity immunoglobulin gamma Fc receptor I (IgG Fc receptor I) (Fc-gamma RI) (FcRI) (Fc-gamma RIA) (FcgammaRIa) (CD antigen CD64)</u>
Humangene_id :	<u><a href="#">2209</a></u>
Humanswissprot_no :	<u><a href="#">P12314</a></u>
Immunogen :	<u>Synthetic peptide from human protein at AA range: 230-280</u>
Specificity :	<u>The antibody detects endogenous CD64</u>
Formulation :	<u>Liquid in PBS containing 50% glycerol, 0.5% BSA and 0.02% sodium azide.</u>
Source :	<u>Rabbit</u>
Dilution :	<u>WB 1:500-2000,IHC-p 1:500-200, ELISA 1:10000-20000</u>
Purification :	<u>The antibody was affinity-purified from rabbit antiserum by affinity-chromatography using epitope-specific immunogen.</u>
Concentration :	<u>1 mg/ml</u>
Storage_stability :	<u>-20°C/1 year</u>
Msds :	<u>MSDS_Antibody.pdf</u>
Other_name :	<u>High affinity immunoglobulin gamma Fc receptor I (IgG Fc receptor I) (Fc-gamma RI) (FcRI) (Fc-gamma RIA) (FcgammaRIa) (CD antigen CD64)</u>
Molecular Weight :	<u>45KD</u>

## Product Images

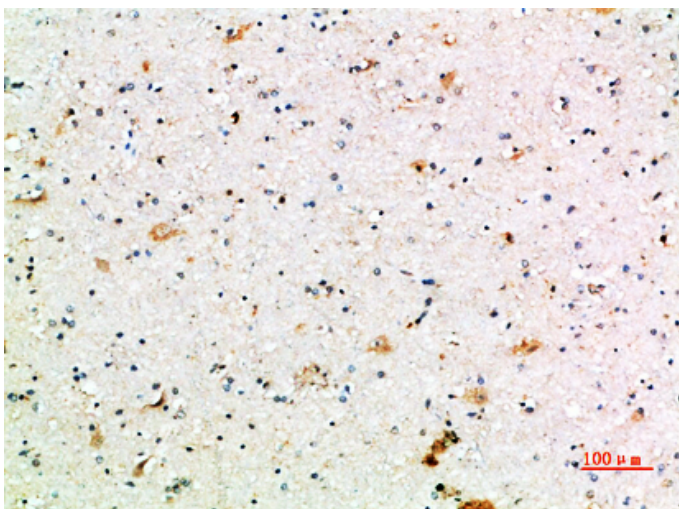


1 mouse-kidney 2 mouse-kidney 3 mouse-lung  
4 mouse-heart 5 293T 6 293T

Western blot analysis of mouse-kidney lysate, antibody was diluted at 2000. Secondary antibody was diluted at 1:20000



Immunohistochemical analysis of paraffin-embedded human-stomach-cancer, antibody was diluted at 1:200



Immunohistochemical analysis of paraffin-embedded human-brain, antibody was diluted at 1:200



**专注二抗产品**

Biodragon旗下品牌

---