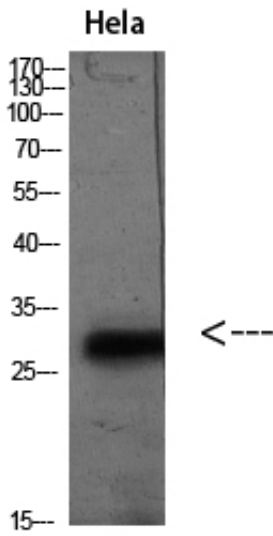




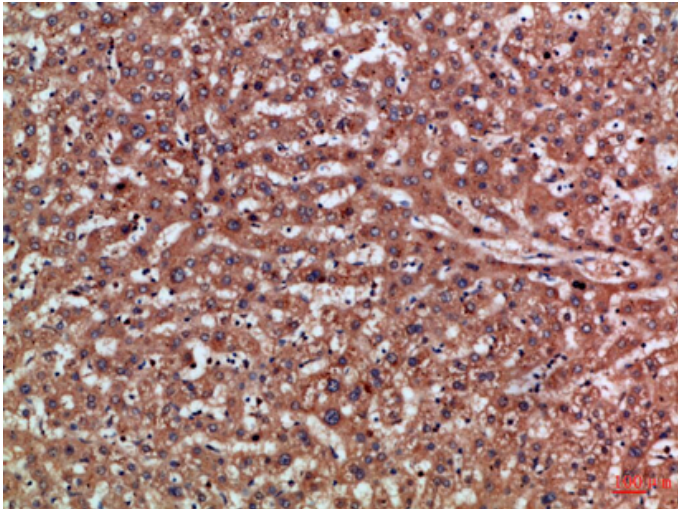
PD-L2 Polyclonal Antibody

Catalog_no :	AT5890
Applications :	WB,IHC-p,ELISA
Reactivity :	Human
Category :	抗原抗体
Size :	100µg/50µg/20µg
Gene_name :	PDCD1LG2 B7DC CD273 PDCD1L2 PDL2
Protein_name :	Programmed cell death 1 ligand 2 (PD-1 ligand 2) (PD-L2) (PDCD1 ligand 2) (Programmed death ligand 2) (Butyrophilin B7-DC) (B7-DC) (CD antigen CD273)
Humangene_id :	80380
Humanswissprot_no :	Q9BQ51
Immunogen :	Synthetic peptide from human protein at AA range: 31-80
Specificity :	The antibody detects endogenous PD-L2
Formulation :	Liquid in PBS containing 50% glycerol, 0.5% BSA and 0.02% sodium azide.
Source :	Rabbit
Dilution :	WB 1:500-2000,IHC-p 1:500-200, ELISA 1:10000-20000
Purification :	The antibody was affinity-purified from rabbit antiserum by affinity-chromatography using epitope-specific immunogen.
Concentration :	1 mg/ml
Storage_stability :	-20°C/1 year
Msds :	MSDS_Antibody.pdf
Other_name :	Programmed cell death 1 ligand 2 (PD-1 ligand 2) (PD-L2) (PDCD1 ligand 2) (Programmed death ligand 2) (Butyrophilin B7-DC) (B7-DC) (CD antigen CD273)
Molecular Weight :	30KD

Product Images



Western blot analysis of HeLa(TSA 400nM 24h) lysate, antibody was diluted at 2000. Secondary antibody was diluted at 1:20000



Immunohistochemical analysis of paraffin-embedded Human-liver, antibody was diluted at 1:100