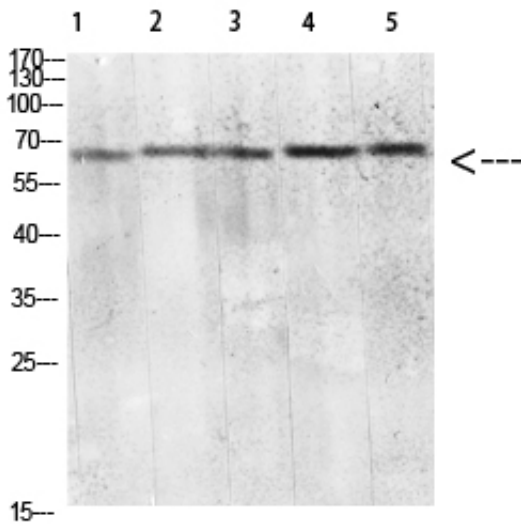




CD299 Polyclonal Antibody

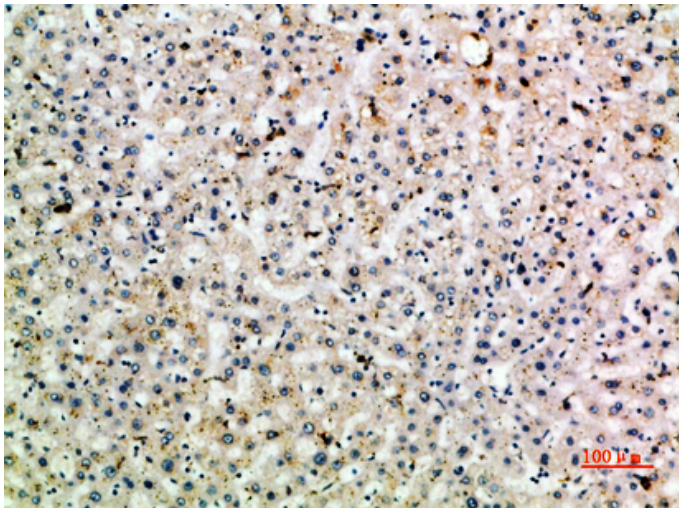
Catalog_no :	AT5892
Applications :	WB,IHC-p,ELISA
Reactivity :	Human,Mouse,Rat
Category :	抗原抗体
Size :	100µg/50µg/20µg
Gene_name :	CLEC4M CD209L CD209L1 CD299
Protein_name :	C-type lectin domain family 4 member M (CD209 antigen-like protein 1) (DC-SIGN-related protein) (DC-SIGNR) (Dendritic cell-specific ICAM-3-grabbing non-integrin 2) (DC-SIGN2) (Liver/lymph node-specific ICAM-3-grabbing non-integrin) (L-SIGN) (CD antig
Humangene_id	10332
:	
Humanswissprot	Q9H2X3
_no :	
Immunogen :	Synthetic peptide from human protein at AA range: 271-320
Specificity :	The antibody detects endogenous CD299
Formulation :	Liquid in PBS containing 50% glycerol, 0.5% BSA and 0.02% sodium azide.
Source :	Rabbit
Dilution :	WB 1:500-2000,IHC-p 1:500-200, ELISA 1:10000-20000
Purification :	The antibody was affinity-purified from rabbit antiserum by affinity-chromatography using epitope-specific immunogen.
Concentration :	1 mg/ml
Storage_stability	-20°C/1 year
:	
Msds :	MSDS_Antibody.pdf
Other_name :	C-type lectin domain family 4 member M (CD209 antigen-like protein 1) (DC-SIGN-related protein) (DC-SIGNR) (Dendritic cell-specific ICAM-3-grabbing non-integrin 2) (DC-SIGN2) (Liver/lymph node-specific ICAM-3-grabbing non-integrin) (L-SIGN) (CD antigen CD299)
Molecular Weight :	60KD

Product Images



Western blot analysis of mouse-lung mouse-lung lysate, antibody was diluted at 2000. Secondary antibody was diluted at 1:20000

1, mouse-lung 2, mouse-heart
3, 293T 4, Hela 5, 3T3



Immunohistochemical analysis of paraffin-embedded human-liver, antibody was diluted at 1:200