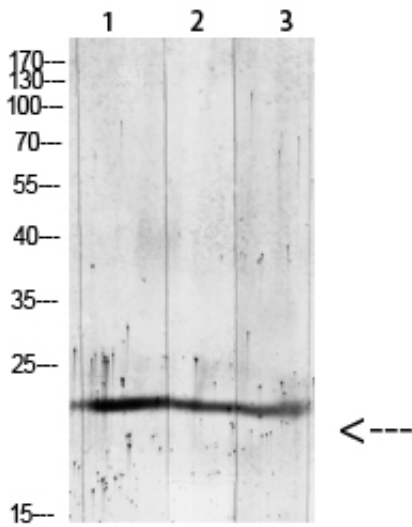


Gremlin-2 Polyclonal Antibody

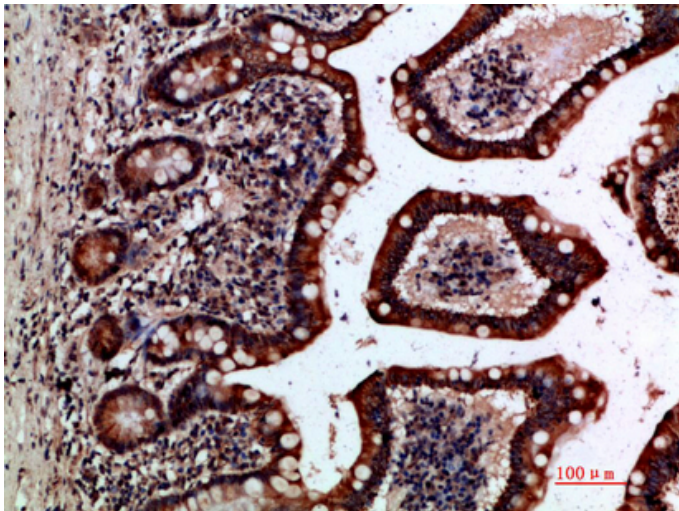
Catalog_no :	AT5894
Applications :	WB,IHC-p,ELISA
Reactivity :	Human,Mouse
Category :	抗原抗体
Size :	100µg/50µg/20µg
Gene_name :	GREM2 CKTSF1B2 DAND3 PRDC
Protein_name :	Gremlin-2 (Cysteine knot superfamily 1, BMP antagonist 2) (DAN domain family member 3) (Protein related to DAN and cerberus)
Humangene_id :	64388
Humanswissprot_no :	Q9H772
Immunogen :	The antiserum was produced against synthesized peptide derived from the Internal region of human GREM2. AA range:71-120
Specificity :	The antibody detects endogenous Gremlin-2
Formulation :	Liquid in PBS containing 50% glycerol, 0.5% BSA and 0.02% sodium azide.
Source :	Rabbit
Dilution :	WB 1:500-2000,IHC-p 1:500-200, ELISA 1:10000-20000
Purification :	The antibody was affinity-purified from rabbit antiserum by affinity-chromatography using epitope-specific immunogen.
Concentration :	1 mg/ml
Storage_stability :	-20°C/1 year
Msds :	MSDS_Antibody.pdf
Other_name :	Gremlin-2 (Cysteine knot superfamily 1, BMP antagonist 2) (DAN domain family member 3) (Protein related to DAN and cerberus)
Molecular Weight :	19KD

Product Images

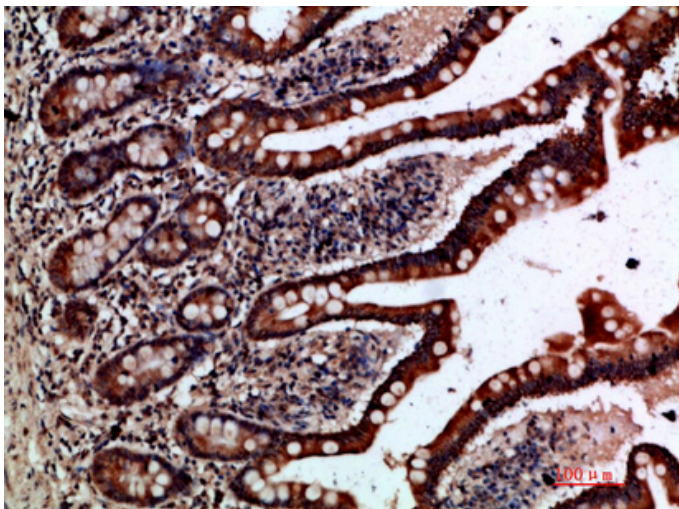


1, mouse-kidney 2, 293T 3, mouse-lung

Western blot analysis of RAT-brain lysate, antibody was diluted at 1000. Secondary antibody was diluted at 1:20000

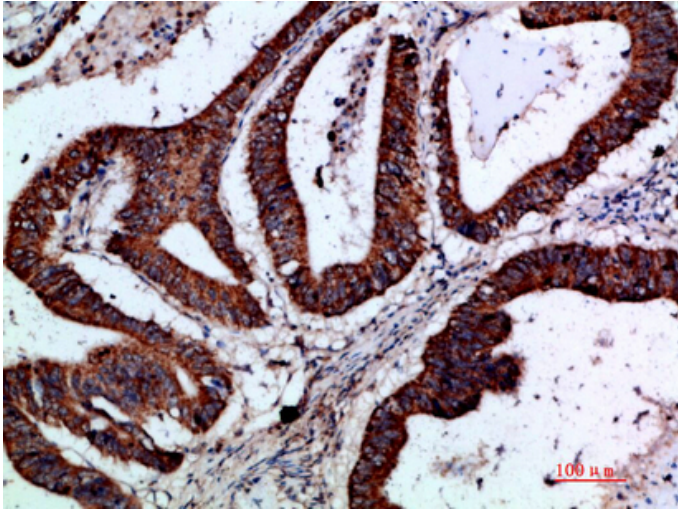


Immunohistochemical analysis of paraffin-embedded human-small-intestine, antibody was diluted at 1:200

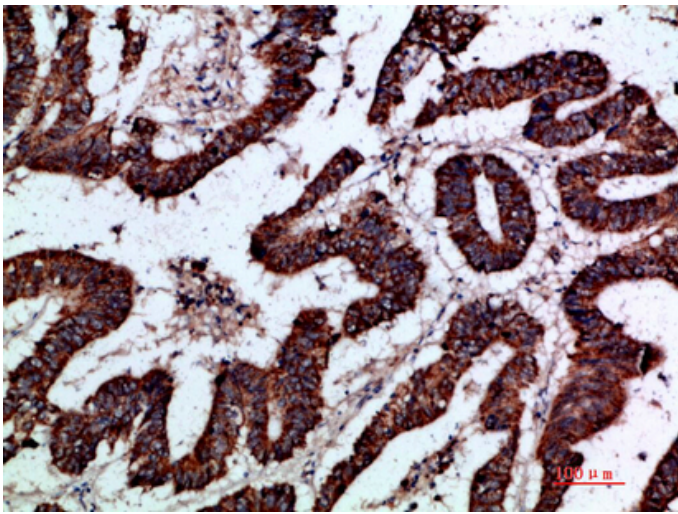


Immunohistochemical analysis of paraffin-embedded human-small-intestine, antibody was diluted at 1:200

Immunohistochemical analysis of paraffin-embedded



human-colon-cancer, antibody was diluted at 1:200



Immunohistochemical analysis of paraffin-embedded human-colon-cancer, antibody was diluted at 1:200