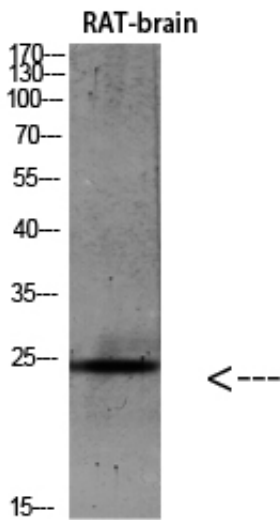


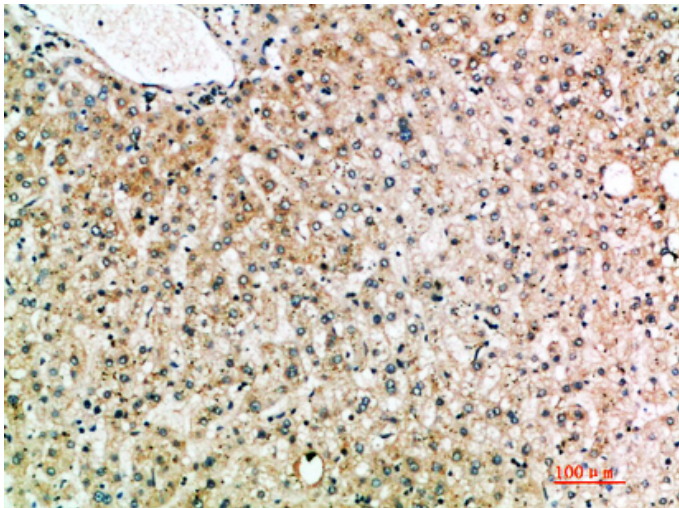
IL-19 Polyclonal Antibody

Catalog_no :	AT5895
Applications :	WB,IHC-p,ELISA
Reactivity :	Human,Rat
Category :	抗原抗体
Size :	100µg/50µg/20µg
Gene_name :	IL19 ZMDA1
Protein_name :	Interleukin-19 (IL-19) (Melanoma differentiation-associated protein-like protein) (NG.1)
Humangene_id :	29949
Humanswissprot_no :	Q9UHD0
Immunogen :	Synthetic peptide from human protein at AA range: 51-100
Specificity :	The antibody detects endogenous IL-19
Formulation :	Liquid in PBS containing 50% glycerol, 0.5% BSA and 0.02% sodium azide.
Source :	Rabbit
Dilution :	WB 1:500-2000,IHC-p 1:500-200, ELISA 1:10000-20000
Purification :	The antibody was affinity-purified from rabbit antiserum by affinity-chromatography using epitope-specific immunogen.
Concentration :	1 mg/ml
Storage_stability :	-20°C/1 year
Msds :	MSDS_Antibody.pdf
Other_name :	Interleukin-19 (IL-19) (Melanoma differentiation-associated protein-like protein) (NG.1)
Molecular Weight :	20KD

Product Images



Western blot analysis of 293T Hela VEC KB mouse-kidney lysate, antibody was diluted at 500. Secondary antibody was diluted at 1:20000



Immunohistochemical analysis of paraffin-embedded human-liver, antibody was diluted at 1:200