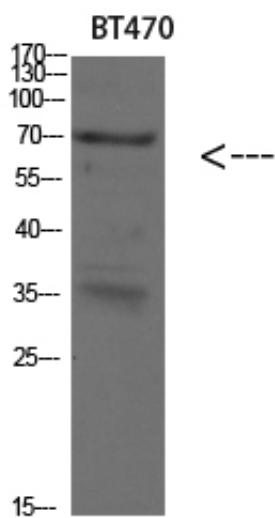




Cytokeratin 4 Polyclonal Antibody

Catalog_no :	AT5899
Applications :	WB,ELISA
Reactivity :	Human,Mouse,Rat
Category :	抗原抗体
Size :	100µg/50µg/20µg
Gene_name :	KRT4 CYK4
Protein_name :	Keratin, type II cytoskeletal 4 (Cytokeratin-4) (CK-4) (Keratin-4) (K4) (Type-II keratin Kb4)
Humanswissprot_no :	P19013
Immunogen :	Synthetic peptide from human protein at AA range: 200-260
Specificity :	The antibody detects endogenous Cytokeratin 4
Formulation :	Liquid in PBS containing 50% glycerol, 0.5% BSA and 0.02% sodium azide.
Source :	Rabbit
Dilution :	WB 1:500-2000, ELISA 1:10000-20000
Purification :	The antibody was affinity-purified from rabbit antiserum by affinity-chromatography using epitope-specific immunogen.
Concentration :	1 mg/ml
Storage_stability :	-20°C/1 year
Msds :	MSDS_Antibody.pdf
Other_name :	Keratin, type II cytoskeletal 4 (Cytokeratin-4) (CK-4) (Keratin-4) (K4) (Type-II keratin Kb4)
Molecular Weight :	57KD

Product Images



Western blot analysis of SKOV3 293T lysate, antibody was diluted at 500. Secondary antibody was diluted at 1:20000