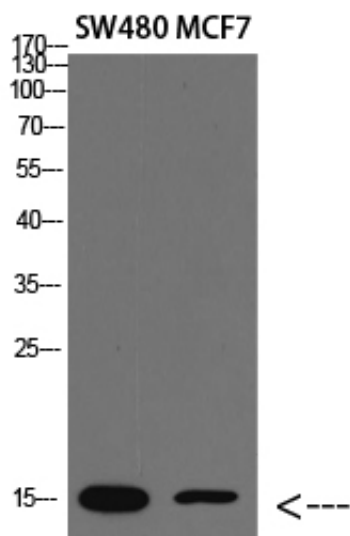




## RPA14 Polyclonal Antibody

Catalog_no :	<u>AT5903</u>
Applications :	<u>WB,ELISA</u>
Reactivity :	<u>Human,Mouse</u>
Category :	<u>抗原抗体</u>
Size :	<u>100µg/50µg/20µg</u>
Gene_name :	<u>RPA3 REPA3 RPA14</u>
Protein_name :	<u>Replication protein A 14 kDa subunit (RP-A p14) (Replication factor A protein 3) (RF-A protein 3)</u>
Humangene_id :	<u><a href="#">6119</a></u>
Humanswissprot_no :	<u><a href="#">P35244</a></u>
Immunogen :	<u>Synthetic peptide from human protein at AA range: 30-80</u>
Specificity :	<u>The antibody detects endogenous RPA14</u>
Formulation :	<u>Liquid in PBS containing 50% glycerol, 0.5% BSA and 0.02% sodium azide.</u>
Source :	<u>Rabbit</u>
Dilution :	<u>WB 1:500-2000, ELISA 1:10000-20000</u>
Purification :	<u>The antibody was affinity-purified from rabbit antiserum by affinity-chromatography using epitope-specific immunogen.</u>
Concentration :	<u>1 mg/ml</u>
Storage_stability :	<u>-20°C/1 year</u>
Msds :	<u>MSDS_Antibody.pdf</u>
Other_name :	<u>Replication protein A 14 kDa subunit (RP-A p14) (Replication factor A protein 3) (RF-A protein 3)</u>
Molecular Weight :	<u>14KD</u>

## Product Images



Western blot analysis of lysate, antibody was diluted at 2000. Secondary antibody was diluted at 1:20000