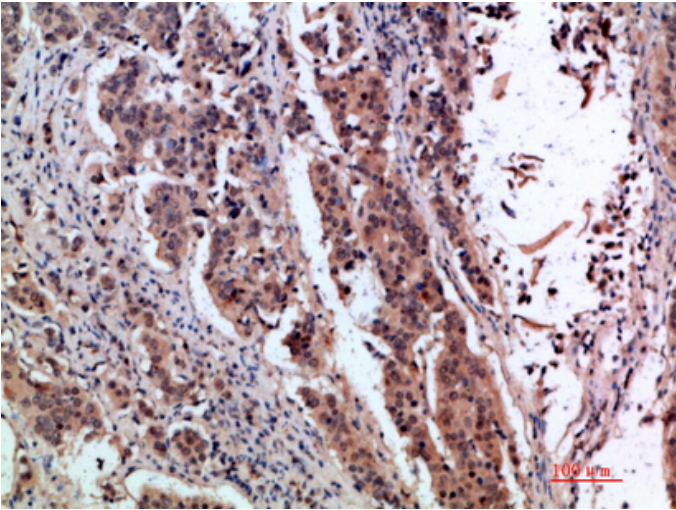




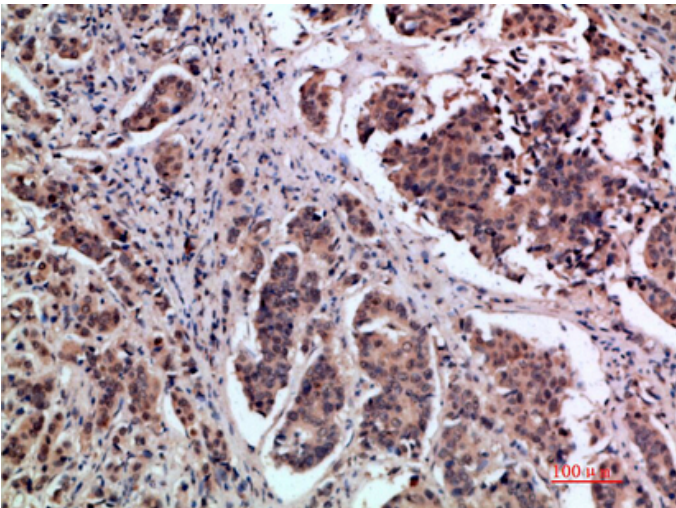
pS2 Polyclonal Antibody

Catalog_no :	<u>AT5914</u>
Applications :	<u>IHC-p,ELISA</u>
Reactivity :	<u>Human</u>
Category :	<u>抗原抗体</u>
Size :	<u>100µg/50µg/20µg</u>
Gene_name :	<u>TFF1 BCEI PS2</u>
Protein_name :	<u>Trefoil factor 1 (Breast cancer estrogen-inducible protein) (PNR-2) (Polypeptide P1.A) (hP1.A) (Protein pS2)</u>
Humangene_id :	<u>7031</u>
Humanswissprot_no :	<u>P04155</u>
Immunogen :	<u>Synthetic peptide from human protein at AA range: 10-50</u>
Specificity :	<u>The antibody detects endogenous pS2</u>
Formulation :	<u>Liquid in PBS containing 50% glycerol, 0.5% BSA and 0.02% sodium azide.</u>
Source :	<u>Rabbit</u>
Dilution :	<u>IHC-p 1:50-200, ELISA 1:10000-20000</u>
Purification :	<u>The antibody was affinity-purified from rabbit antiserum by affinity-chromatography using epitope-specific immunogen.</u>
Concentration :	<u>1 mg/ml</u>
Storage_stability :	<u>-20°C/1 year</u>
Msds :	<u>MSDS_Antibody.pdf</u>
Other_name :	<u>Trefoil factor 1 (Breast cancer estrogen-inducible protein) (PNR-2) (Polypeptide P1.A) (hP1.A) (Protein pS2)</u>

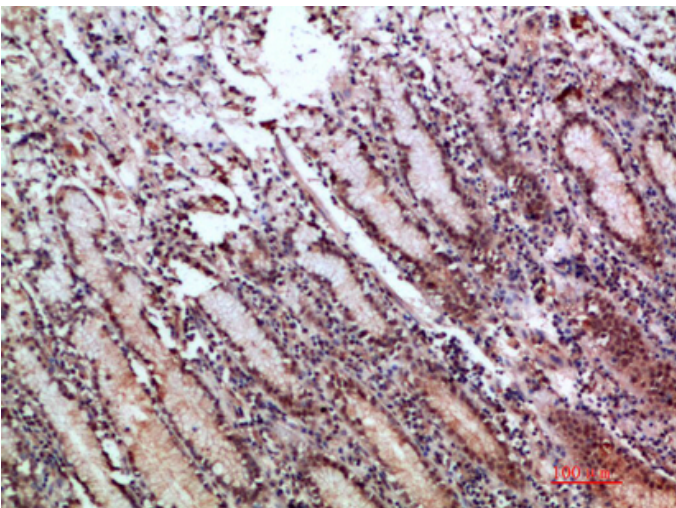
Product Images



Immunohistochemical analysis of paraffin-embedded human-breast-cancer, antibody was diluted at 1:200

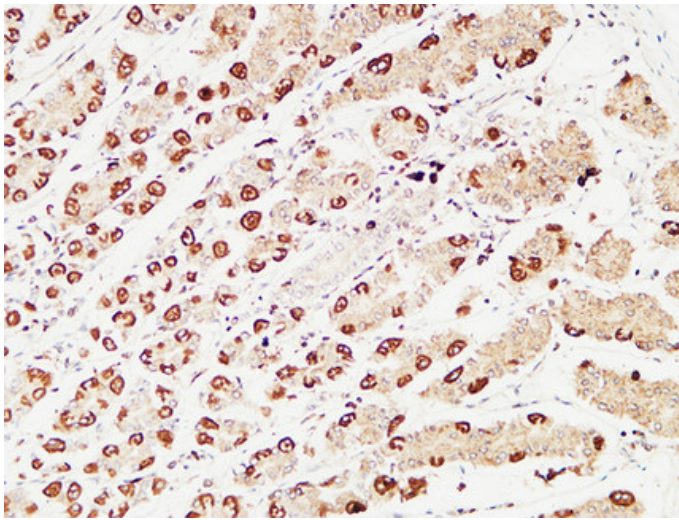
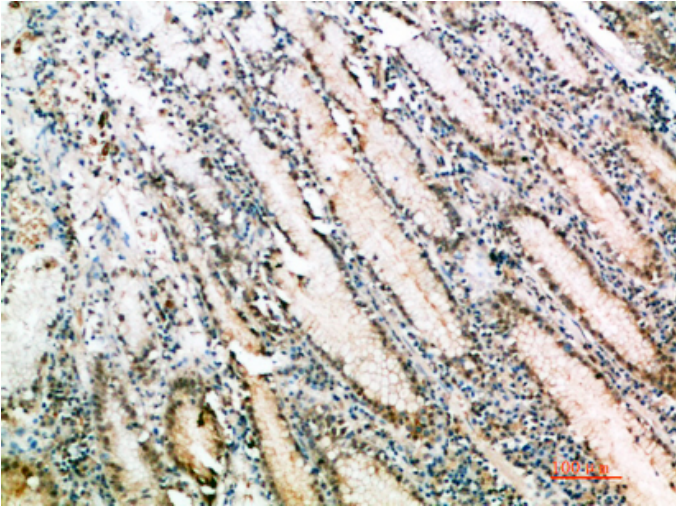


Immunohistochemical analysis of paraffin-embedded human-breast-cancer, antibody was diluted at 1:200

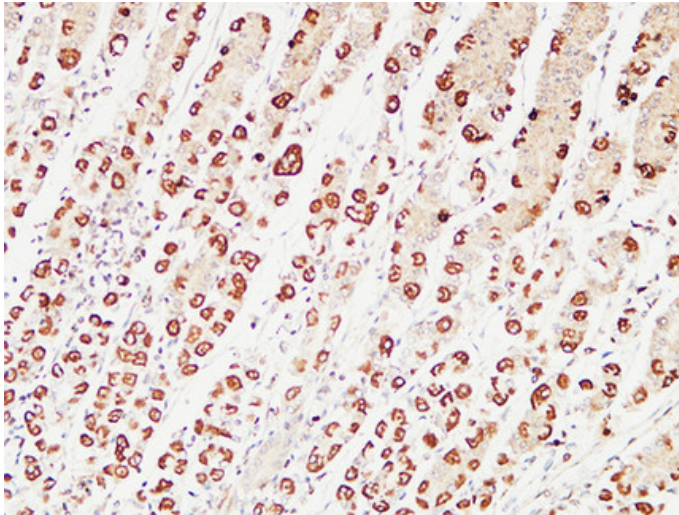


Immunohistochemical analysis of paraffin-embedded human-stomach, antibody was diluted at 1:200

Immunohistochemical analysis of paraffin-embedded human-stomach, antibody was diluted at 1:200



Immunohistochemical analysis of paraffin-embedded Human stomach. 1, Antibody was diluted at 1:200(4°,overnight). 2, High-pressure and temperature EDTA, pH8.0 was used for antigen retrieval. 3,Secondary antibody was diluted at 1:200(room temperature, 30min).



Immunohistochemical analysis of paraffin-embedded Human stomach. 1, Antibody was diluted at 1:200(4°,overnight). 2, High-pressure and temperature EDTA, pH8.0 was used for antigen retrieval. 3,Secondary antibody was diluted at 1:200(room temperature, 30min).

Immunohistochemical analysis of paraffin-embedded Human stomach. 1, Antibody was diluted at 1:200(4°,overnight). 2, High-pressure and temperature EDTA, pH8.0 was used for antigen retrieval. 3,Secondary antibody was diluted at 1:200(room temperature, 30min).

