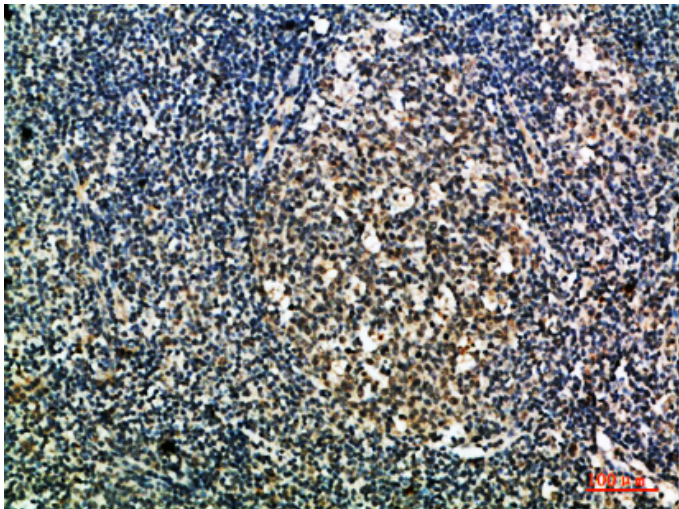


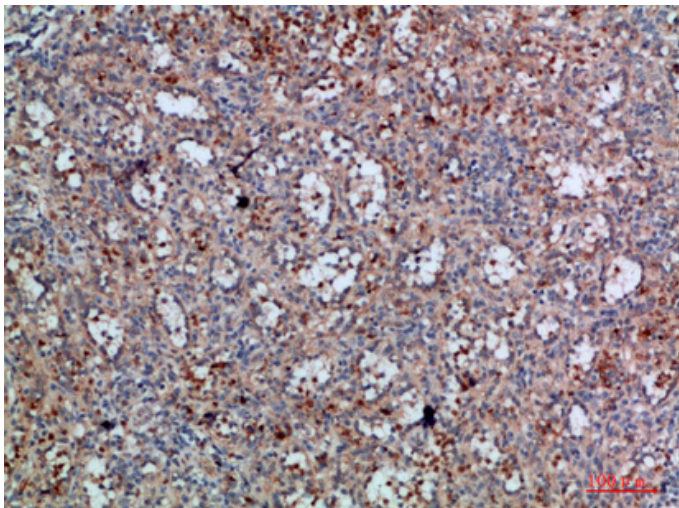
Integrin α X Polyclonal Antibody

Catalog_no :	AT5924
Applications :	IHC-p,ELISA
Reactivity :	Human
Category :	抗原抗体
Size :	100 μ g/50 μ g/20 μ g
Gene_name :	ITGAX CD11C
Protein_name :	Integrin alpha-X (CD11 antigen-like family member C) (Leu M5) (Leukocyte adhesion glycoprotein p150,95 alpha chain) (Leukocyte adhesion receptor p150,95) (CD antigen CD11c)
Humangene_id :	3687
Humanswissprot_no :	P20702
Immunogen :	Synthetic peptide from human protein at AA range: 920-980
Specificity :	The antibody detects endogenous Integrin α X
Formulation :	Liquid in PBS containing 50% glycerol, 0.5% BSA and 0.02% sodium azide.
Source :	Rabbit
Dilution :	IHC-p 1:50-200, ELISA 1:10000-20000
Purification :	The antibody was affinity-purified from rabbit antiserum by affinity-chromatography using epitope-specific immunogen.
Concentration :	1 mg/ml
Storage_stability :	-20°C/1 year
Msds :	MSDS_Antibody.pdf
Other_name :	Integrin alpha-X (CD11 antigen-like family member C) (Leu M5) (Leukocyte adhesion glycoprotein p150,95 alpha chain) (Leukocyte adhesion receptor p150,95) (CD antigen CD11c)

Product Images



Immunohistochemical analysis of paraffin-embedded human-tonsil, antibody was diluted at 1:200



Immunohistochemical analysis of paraffin-embedded human-spleen, antibody was diluted at 1:200