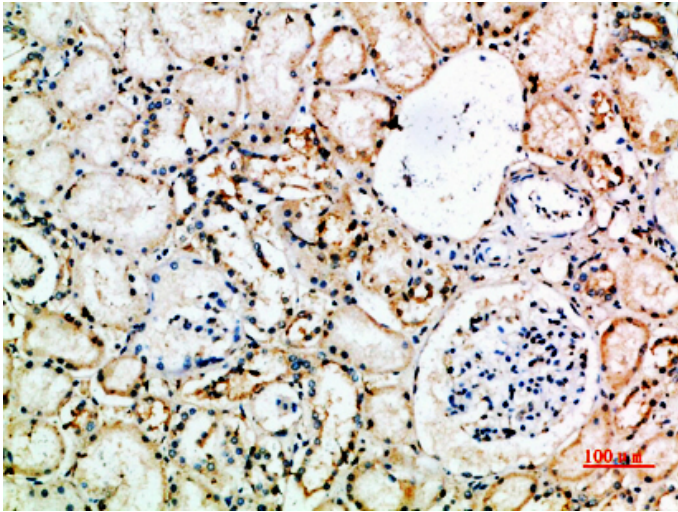


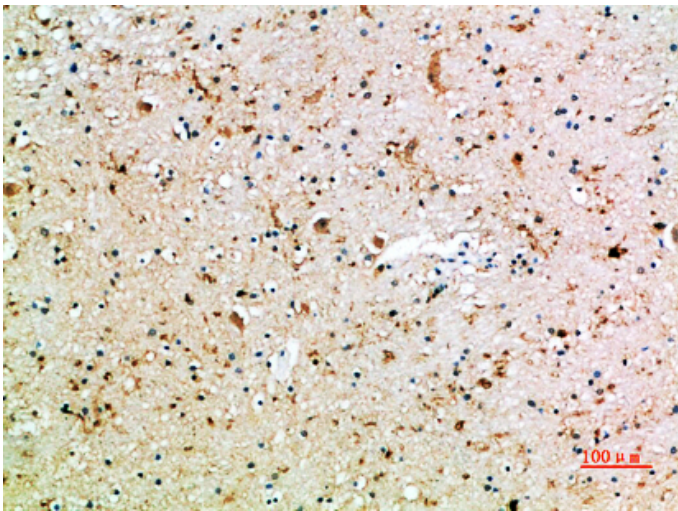
CD16 Polyclonal Antibody

Catalog_no :	AT5925
Applications :	IHC-p,ELISA
Reactivity :	Human
Category :	抗原抗体
Size :	100µg/50µg/20µg
Gene_name :	FCGR3A CD16A FCG3 FCGR3 IGFR3 FCGR3B CD16B FCG3 FCGR3 IGFR3
Protein_name :	Low affinity immunoglobulin gamma Fc region receptor III-A/B (CD16a/b antigen) (Fc-gamma RIII-alpha/beta) (Fc-gamma RIII) (Fc-gamma RIIIa) (FcRIII) (FcRIIIa) (FcR-10) (IgG Fc receptor III-2) (CD antigen CD16a)
Humangene_id :	2214
Humanswissprot_no :	P08637/O75015
Immunogen :	Synthetic peptide from human protein at AA range: 100-150
Specificity :	The antibody detects endogenous CD16
Formulation :	Liquid in PBS containing 50% glycerol, 0.5% BSA and 0.02% sodium azide.
Source :	Rabbit
Dilution :	IHC-p 1:50-200, ELISA 1:10000-20000
Purification :	The antibody was affinity-purified from rabbit antiserum by affinity-chromatography using epitope-specific immunogen.
Concentration :	1 mg/ml
Storage_stability :	-20°C/1 year
Msds :	MSDS_Antibody.pdf

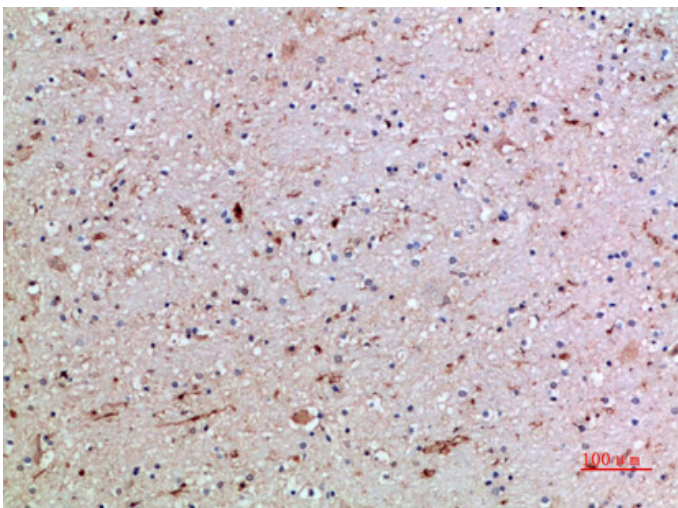
Product Images



Immunohistochemical analysis of paraffin-embedded human-kidney, antibody was diluted at 1:200



Immunohistochemical analysis of paraffin-embedded human-brain, antibody was diluted at 1:200



Immunohistochemical analysis of paraffin-embedded human-brain, antibody was diluted at 1:200