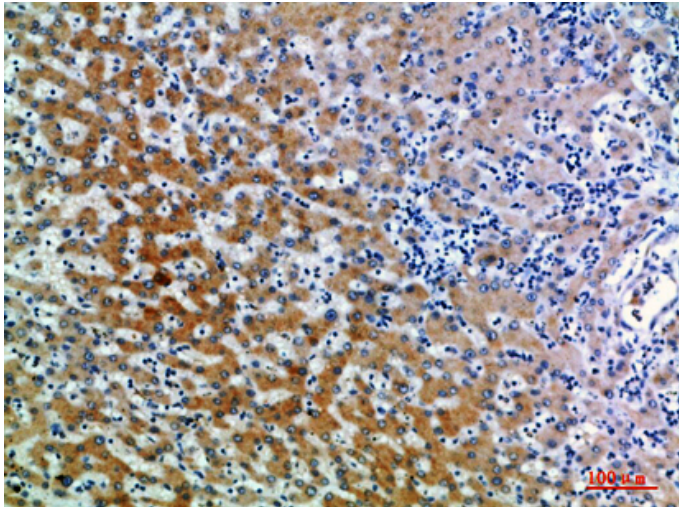


## CD109 Polyclonal Antibody

Catalog_no :	AT5927
Applications :	IHC-p,ELISA
Reactivity :	Human
Category :	抗原抗体
Size :	100µg/50µg/20µg
Gene_name :	CD109 CPAMD7
Protein_name :	CD109 antigen (150 kDa TGF-beta-1-binding protein) (C3 and PZP-like alpha-2-macroglobulin domain-containing protein 7) (Platelet-specific Gov antigen) (p180) (r150) (CD antigen CD109)
Humangene_id :	<a href="#">135228</a>
Humanswissprot_no :	<a href="#">Q6YHK3</a>
Immunogen :	Synthetic peptide from human protein at AA range: 751-800
Specificity :	The antibody detects endogenous CD109
Formulation :	Liquid in PBS containing 50% glycerol, 0.5% BSA and 0.02% sodium azide.
Source :	Rabbit
Dilution :	IHC-p 1:50-200, ELISA 1:10000-20000
Purification :	The antibody was affinity-purified from rabbit antiserum by affinity-chromatography using epitope-specific immunogen.
Concentration :	1 mg/ml
Storage_stability :	-20°C/1 year
Msds :	<a href="#">MSDS_Antibody.pdf</a>
Other_name :	CD109 antigen (150 kDa TGF-beta-1-binding protein) (C3 and PZP-like alpha-2-macroglobulin domain-containing protein 7) (Platelet-specific Gov antigen) (p180) (r150) (CD antigen CD109)

## Product Images



Immunohistochemical analysis of paraffin-embedded human-liver, antibody was diluted at 1:200