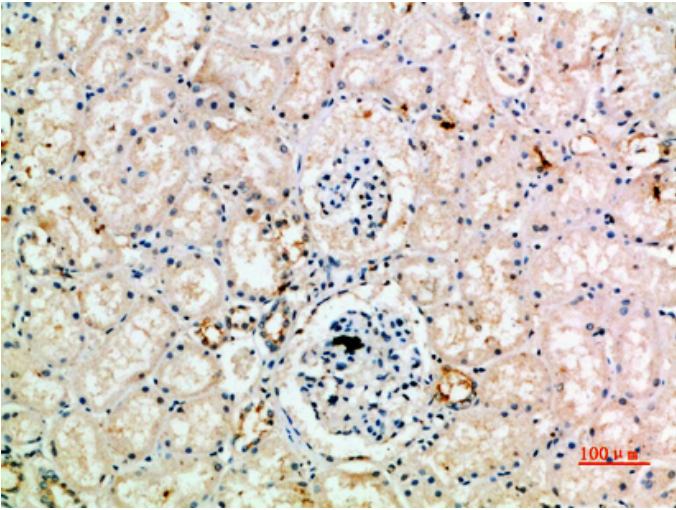


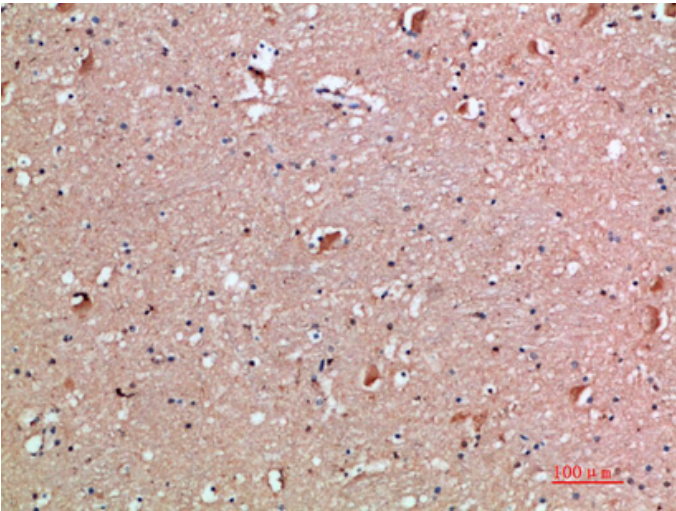
## CD218b Polyclonal Antibody

Catalog_no :	AT5940
Applications :	IHC-p,ELISA
Reactivity :	Human
Category :	抗原抗体
Size :	100µg/50µg/20µg
Gene_name :	IL18RAP IL1R7
Protein_name :	Interleukin-18 receptor accessory protein (IL-18 receptor accessory protein) (IL-18RAcP) (Accessory protein-like) (AcPL) (CD218 antigen-like family member B) (CDw218b) (IL-1R accessory protein-like) (IL-1RAcPL) (Interleukin-1 receptor 7) (IL-1R-7) (I
Humangene_id :	<a href="#">8807</a>
Humanswissprot_no :	<a href="#">O95256</a>
Immunogen :	Synthetic peptide from human protein at AA range: 291-340
Specificity :	The antibody detects endogenous CD218b
Formulation :	Liquid in PBS containing 50% glycerol, 0.5% BSA and 0.02% sodium azide.
Source :	Rabbit
Dilution :	IHC-p 1:50-200, ELISA 1:10000-20000
Purification :	The antibody was affinity-purified from rabbit antiserum by affinity-chromatography using epitope-specific immunogen.
Concentration :	1 mg/ml
Storage_stability :	-20°C/1 year
Msds :	MSDS_Antibody.pdf
Other_name :	Interleukin-18 receptor accessory protein (IL-18 receptor accessory protein) (IL-18RAcP) (Accessory protein-like) (AcPL) (CD218 antigen-like family member B) (CDw218b) (IL-1R accessory protein-like) (IL-1RAcPL) (Interleukin-1 receptor 7) (IL-1R-7) (IL-1R7) (Interleukin-18 receptor accessory protein-like) (Interleukin-18 receptor beta) (IL-18R-beta) (IL-18Rbeta) (CD antigen CD218b)

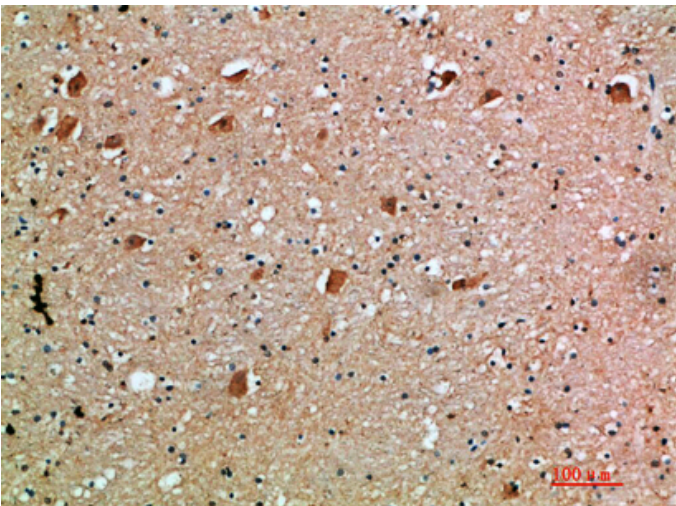
## Product Images



Immunohistochemical analysis of paraffin-embedded human-kidney, antibody was diluted at 1:200



Immunohistochemical analysis of paraffin-embedded human-brain, antibody was diluted at 1:200



Immunohistochemical analysis of paraffin-embedded human-brain, antibody was diluted at 1:200