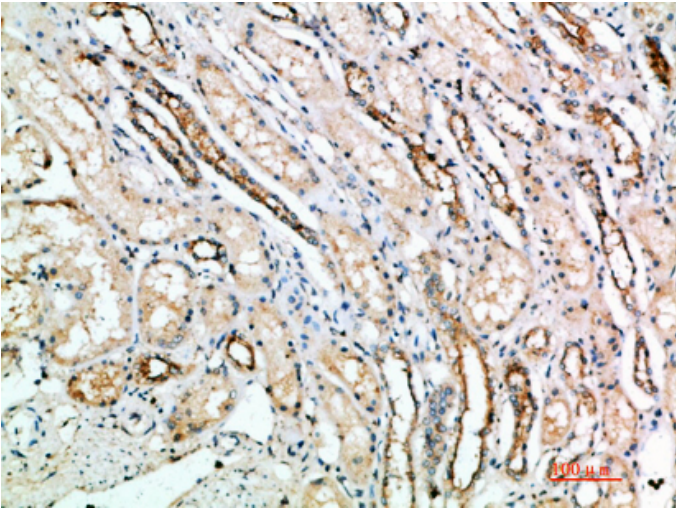


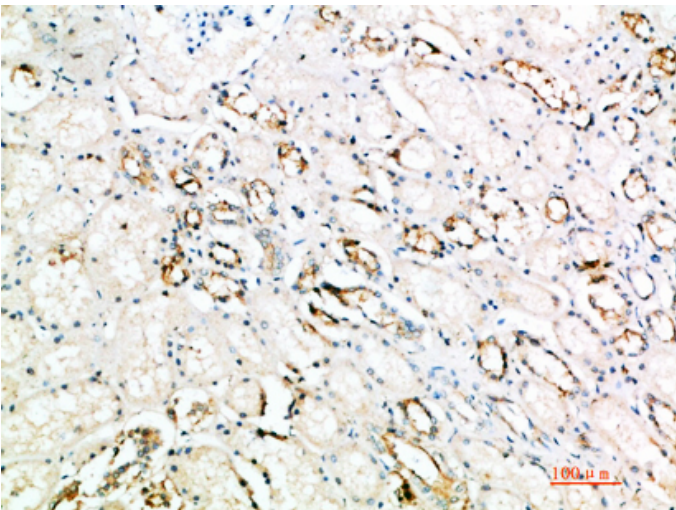
CD297 Polyclonal Antibody

Catalog_no :	AT5943
Applications :	IHC-p,ELISA
Reactivity :	Human
Category :	抗原抗体
Size :	100µg/50µg/20µg
Gene_name :	ART4 DO DOK1
Protein_name :	Ecto-ADP-ribosyltransferase 4 (EC 2.4.2.31) (ADP-ribosyltransferase C2 and C3 toxin-like 4) (ARTC4) (Dombrock blood group carrier molecule) (Mono(ADP-ribosyl)transferase 4) (NAD(P)(+)-arginine ADP-ribosyltransferase 4) (CD antigen CD297)
Humangene_id :	420
Humanswissprot_no :	Q93070
Immunogen :	Synthetic peptide from human protein at AA range: 181-230
Specificity :	The antibody detects endogenous CD297
Formulation :	Liquid in PBS containing 50% glycerol, 0.5% BSA and 0.02% sodium azide.
Source :	Rabbit
Dilution :	IHC-p 1:50-200, ELISA 1:10000-20000
Purification :	The antibody was affinity-purified from rabbit antiserum by affinity-chromatography using epitope-specific immunogen.
Concentration :	1 mg/ml
Storage_stability :	-20°C/1 year
Msds :	MSDS_Antibody.pdf
Other_name :	Ecto-ADP-ribosyltransferase 4 (EC 2.4.2.31) (ADP-ribosyltransferase C2 and C3 toxin-like 4) (ARTC4) (Dombrock blood group carrier molecule) (Mono(ADP-ribosyl)transferase 4) (NAD(P)(+)-arginine ADP-ribosyltransferase 4) (CD antigen CD297)

Product Images



Immunohistochemical analysis of paraffin-embedded human-kidney, antibody was diluted at 1:200



Immunohistochemical analysis of paraffin-embedded human-kidney, antibody was diluted at 1:200