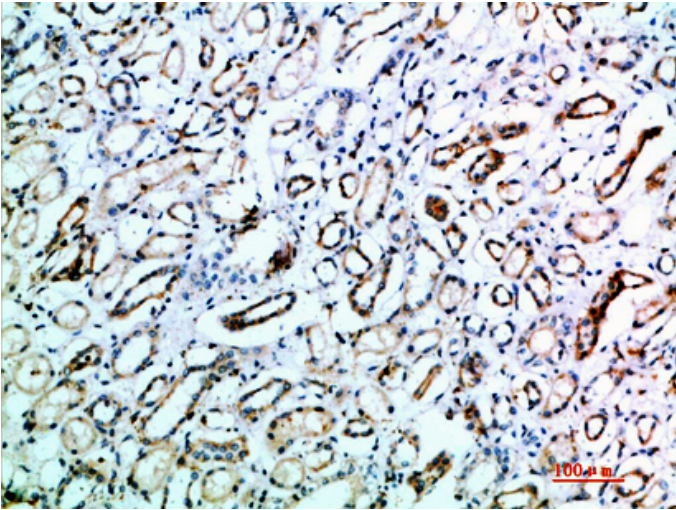


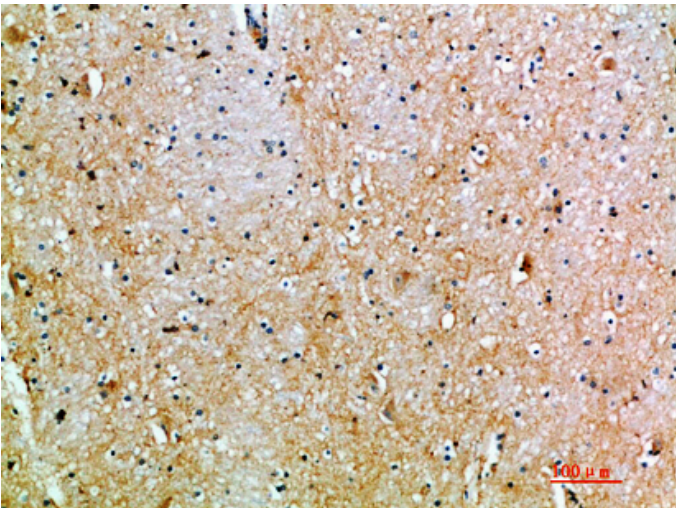
CD231 Polyclonal Antibody

Catalog_no :	AT5946
Applications :	IHC-p,ELISA
Reactivity :	Human,Mouse,Rat
Category :	抗原抗体
Size :	100µg/50µg/20µg
Gene_name :	TSPAN7 A15 DXS1692E MXS1 TM4SF2
Protein_name :	Tetraspanin-7 (Tspan-7) (Cell surface glycoprotein A15) (Membrane component chromosome X surface marker 1) (T-cell acute lymphoblastic leukemia-associated antigen 1) (TALLA-1) (Transmembrane 4 superfamily member 2) (CD antigen CD231)
Humangene_id :	7102
Humanswissprot_no :	P41732
Immunogen :	Synthetic peptide from human protein at AA range: 101-150
Specificity :	The antibody detects endogenous CD231
Formulation :	Liquid in PBS containing 50% glycerol, 0.5% BSA and 0.02% sodium azide.
Source :	Rabbit
Dilution :	IHC-p 1:50-200, ELISA 1:10000-20000
Purification :	The antibody was affinity-purified from rabbit antiserum by affinity-chromatography using epitope-specific immunogen.
Concentration :	1 mg/ml
Storage_stability :	-20°C/1 year
Msds :	MSDS_Antibody.pdf
Other_name :	Tetraspanin-7 (Tspan-7) (Cell surface glycoprotein A15) (Membrane component chromosome X surface marker 1) (T-cell acute lymphoblastic leukemia-associated antigen 1) (TALLA-1) (Transmembrane 4 superfamily member 2) (CD antigen CD231)

Product Images



Immunohistochemical analysis of paraffin-embedded human-kidney, antibody was diluted at 1:200



Immunohistochemical analysis of paraffin-embedded human-brain, antibody was diluted at 1:200