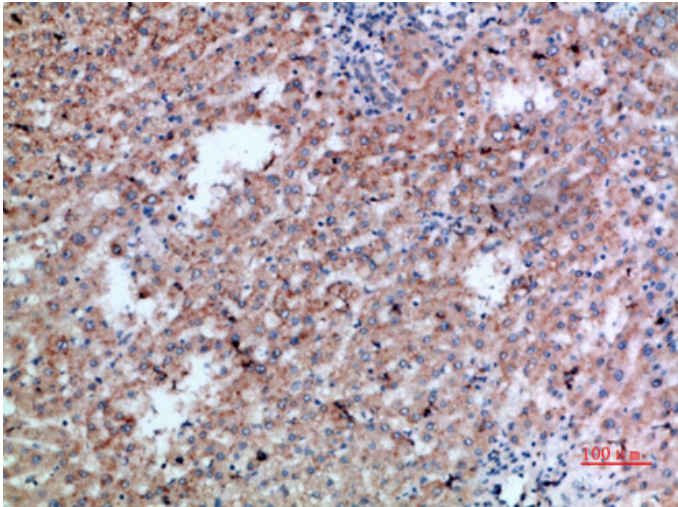


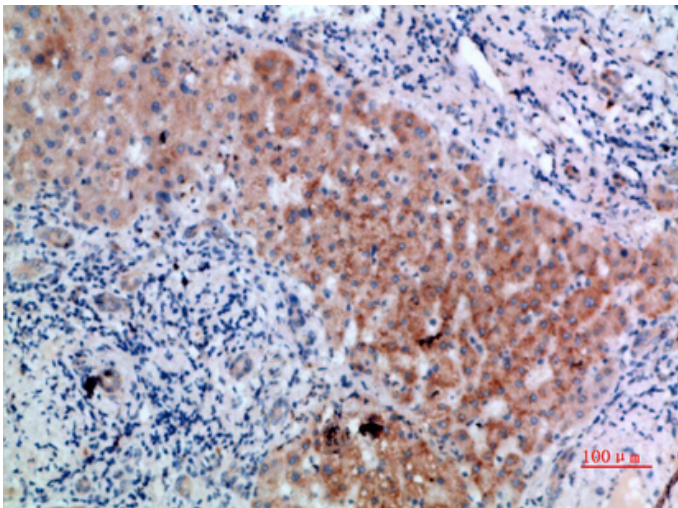
CD300b Polyclonal Antibody

Catalog_no :	AT5949
Applications :	IHC-p,ELISA
Reactivity :	Human
Category :	抗原抗体
Size :	100µg/50µg/20µg
Gene_name :	CD300LB CD300B CLM7 CMRF35A2 IREM3 LMIR5 TREM5 UNQ2530/PRO6029
Protein_name :	CMRF35-like molecule 7 (CLM-7) (CD300 antigen-like family member B) (CMRF35-A2) (Immune receptor expressed on myeloid cells 3) (IREM-3) (Leukocyte mono-Ig-like receptor 5) (Triggering receptor expressed on myeloid cells 5) (TREM-5) (CD antigen CD300b)
Humangene_id :	124599
Humanswissprot_no :	A8K4G0
Immunogen :	Synthetic peptide from human protein at AA range: 61-110
Specificity :	The antibody detects endogenous CD300b
Formulation :	Liquid in PBS containing 50% glycerol, 0.5% BSA and 0.02% sodium azide.
Source :	Rabbit
Dilution :	IHC-p 1:50-200, ELISA 1:10000-20000
Purification :	The antibody was affinity-purified from rabbit antiserum by affinity-chromatography using epitope-specific immunogen.
Concentration :	1 mg/ml
Storage_stability :	-20°C/1 year
Msds :	MSDS_Antibody.pdf
Other_name :	CMRF35-like molecule 7 (CLM-7) (CD300 antigen-like family member B) (CMRF35-A2) (Immune receptor expressed on myeloid cells 3) (IREM-3) (Leukocyte mono-Ig-like receptor 5) (Triggering receptor expressed on myeloid cells 5) (TREM-5) (CD antigen CD300b)

Product Images



Immunohistochemical analysis of paraffin-embedded human-liver-cancer, antibody was diluted at 1:200



Immunohistochemical analysis of paraffin-embedded human-liver-cancer, antibody was diluted at 1:200