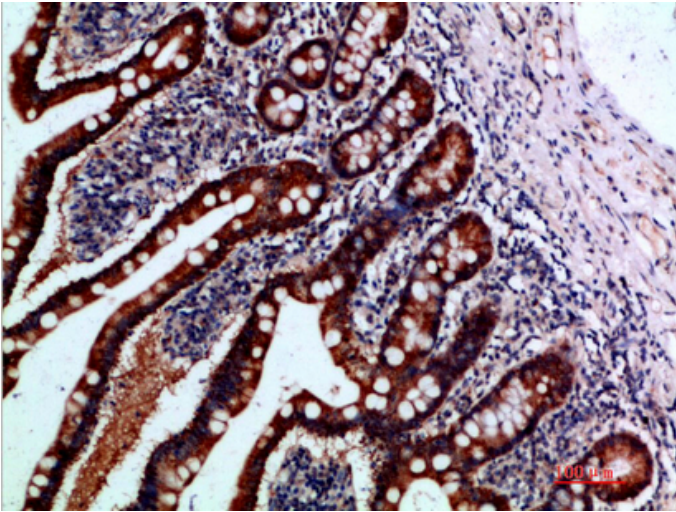


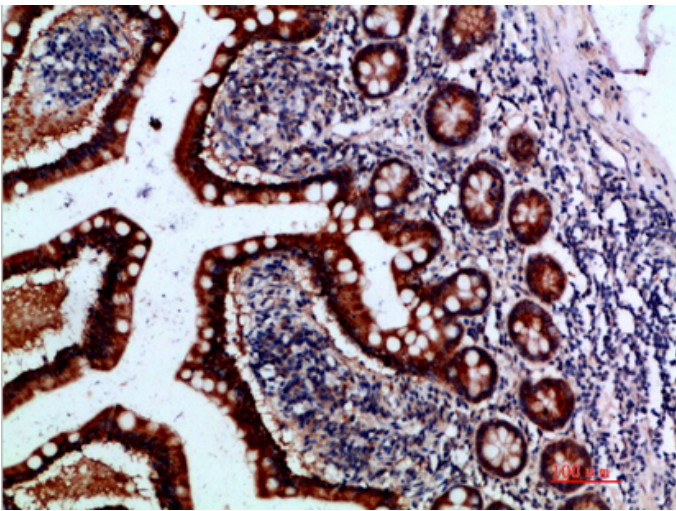
IL-1F7 Polyclonal Antibody

Catalog_no :	AT5954
Applications :	IHC-p,ELISA
Reactivity :	Human
Category :	抗原抗体
Size :	100µg/50µg/20µg
Gene_name :	IL37 FIL1Z IL1F7 IL1H4 IL1RP1
Protein_name :	Interleukin-37 (FIL1 zeta) (IL-1X) (Interleukin-1 family member 7) (IL-1F7) (Interleukin-1 homolog 4) (IL-1H) (IL-1H4) (Interleukin-1 zeta) (IL-1 zeta) (Interleukin-1-related protein) (IL-1RP1) (Interleukin-23) (IL-37)
Humangene_id :	27178
Humanswissprot_no :	Q9NZH6
Immunogen :	Synthetic peptide from human protein at AA range: 101-150
Specificity :	The antibody detects endogenous IL-1F7
Formulation :	Liquid in PBS containing 50% glycerol, 0.5% BSA and 0.02% sodium azide.
Source :	Rabbit
Dilution :	IHC-p 1:50-200, ELISA 1:10000-20000
Purification :	The antibody was affinity-purified from rabbit antiserum by affinity-chromatography using epitope-specific immunogen.
Concentration :	1 mg/ml
Storage_stability :	-20°C/1 year
Msds :	MSDS_Antibody.pdf
Other_name :	Interleukin-37 (FIL1 zeta) (IL-1X) (Interleukin-1 family member 7) (IL-1F7) (Interleukin-1 homolog 4) (IL-1H) (IL-1H4) (Interleukin-1 zeta) (IL-1 zeta) (Interleukin-1-related protein) (IL-1RP1) (Interleukin-23) (IL-37)

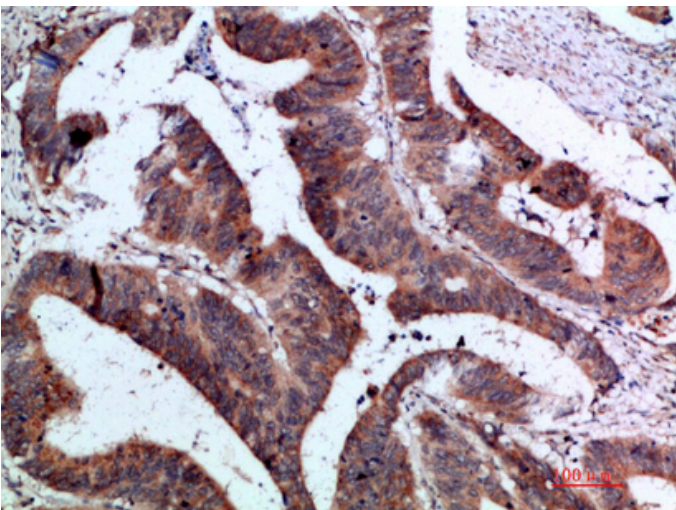
Product Images



Immunohistochemical analysis of paraffin-embedded human-small-intestine, antibody was diluted at 1:200



Immunohistochemical analysis of paraffin-embedded human-small-intestine, antibody was diluted at 1:200



Immunohistochemical analysis of paraffin-embedded human-colon-cancer, antibody was diluted at 1:200

Immunohistochemical analysis of paraffin-embedded human-colon-cancer, antibody was diluted at 1:200

