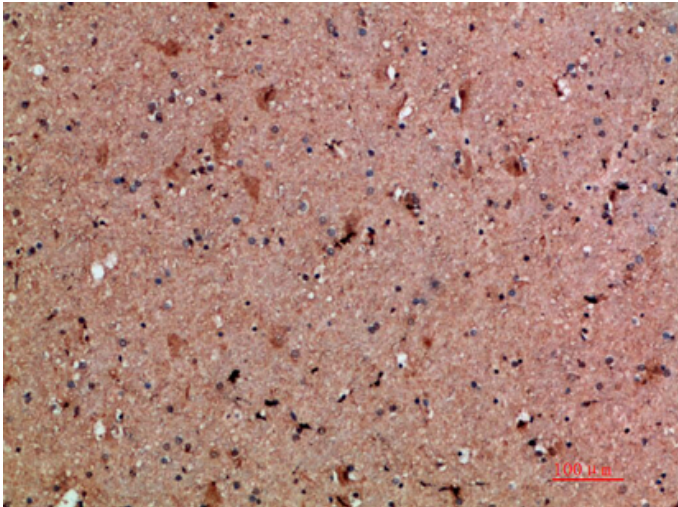




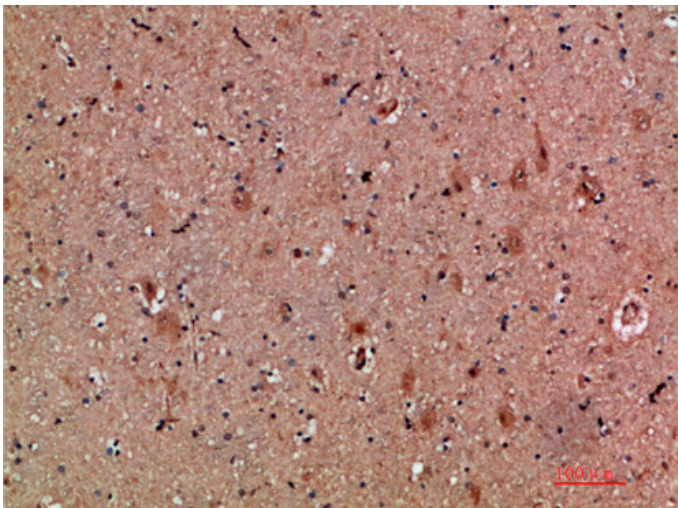
NNT-1 Polyclonal Antibody

| | |
|---------------------|--|
| Catalog_no : | <u>AT5957</u> |
| Applications : | <u>IHC-p,ELISA</u> |
| Reactivity : | <u>Human,Mouse,Rat</u> |
| Category : | <u>抗原抗体</u> |
| Size : | <u>100µg/50µg/20µg</u> |
| Gene_name : | <u>CLCF1 BSF3 CLC NNT1</u> |
| Protein_name : | <u>Cardiotrophin-like cytokine factor 1 (B-cell-stimulating factor 3) (BSF-3) (Novel neurotrophin-1) (NNT-1)</u> |
| Humangene_id : | <u>23529</u> |
| Humanswissprot_no : | <u>Q9UBD9</u> |
| Immunogen : | <u>Synthetic peptide from human protein at AA range: 171-220</u> |
| Specificity : | <u>The antibody detects endogenous NNT-1</u> |
| Formulation : | <u>Liquid in PBS containing 50% glycerol, 0.5% BSA and 0.02% sodium azide.</u> |
| Source : | <u>Rabbit</u> |
| Dilution : | <u>IHC-p 1:50-200, ELISA 1:10000-20000</u> |
| Purification : | <u>The antibody was affinity-purified from rabbit antiserum by affinity-chromatography using epitope-specific immunogen.</u> |
| Concentration : | <u>1 mg/ml</u> |
| Storage_stability : | <u>-20°C/1 year</u> |
| Msds : | <u>MSDS_Antibody.pdf</u> |
| Other_name : | <u>Cardiotrophin-like cytokine factor 1 (B-cell-stimulating factor 3) (BSF-3) (Novel neurotrophin-1) (NNT-1)</u> |

Product Images



Immunohistochemical analysis of paraffin-embedded human-brain, antibody was diluted at 1:200



Immunohistochemical analysis of paraffin-embedded human-brain, antibody was diluted at 1:200