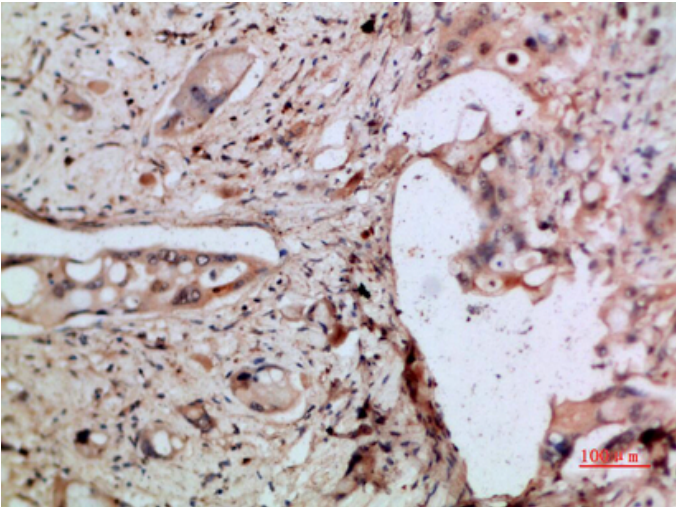


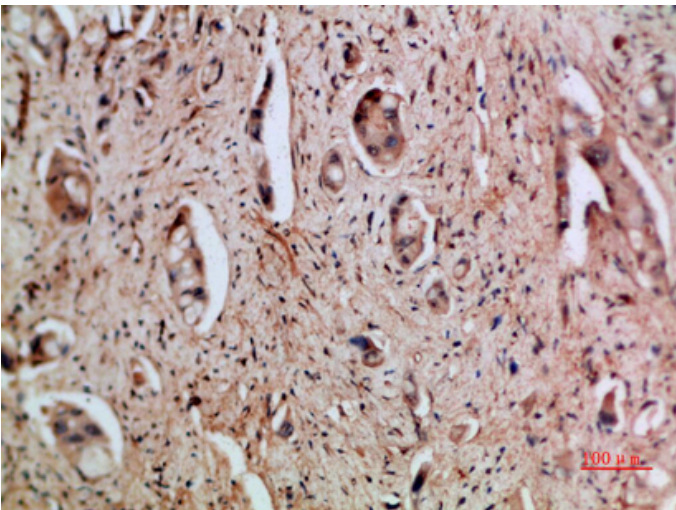
ENA-78 Polyclonal Antibody

Catalog_no :	AT5961
Applications :	IHC-p,ELISA
Reactivity :	Human
Category :	抗原抗体
Size :	100µg/50µg/20µg
Gene_name :	CXCL5 ENA78 SCYB5
Protein_name :	C-X-C motif chemokine 5 (ENA-78(1-78)) (Epithelial-derived neutrophil-activating protein 78) (Neutrophil-activating peptide ENA-78) (Small-inducible cytokine B5) [Cleaved into: ENA-78(8-78); ENA-78(9-78)]
Humangene_id :	6374
Humanswissprot_no :	P42830
Immunogen :	Synthetic peptide from human protein at AA range: 65-114
Specificity :	The antibody detects endogenous ENA-78
Formulation :	Liquid in PBS containing 50% glycerol, 0.5% BSA and 0.02% sodium azide.
Source :	Rabbit
Dilution :	IHC-p 1:50-200, ELISA 1:10000-20000
Purification :	The antibody was affinity-purified from rabbit antiserum by affinity-chromatography using epitope-specific immunogen.
Concentration :	1 mg/ml
Storage_stability :	-20°C/1 year
Msds :	MSDS_Antibody.pdf
Other_name :	C-X-C motif chemokine 5 (ENA-78(1-78)) (Epithelial-derived neutrophil-activating protein 78) (Neutrophil-activating peptide ENA-78) (Small-inducible cytokine B5) [Cleaved into: ENA-78(8-78); ENA-78(9-78)]

Product Images



Immunohistochemical analysis of paraffin-embedded human-pancreas-cancer, antibody was diluted at 1:200



Immunohistochemical analysis of paraffin-embedded human-pancreas-cancer, antibody was diluted at 1:200