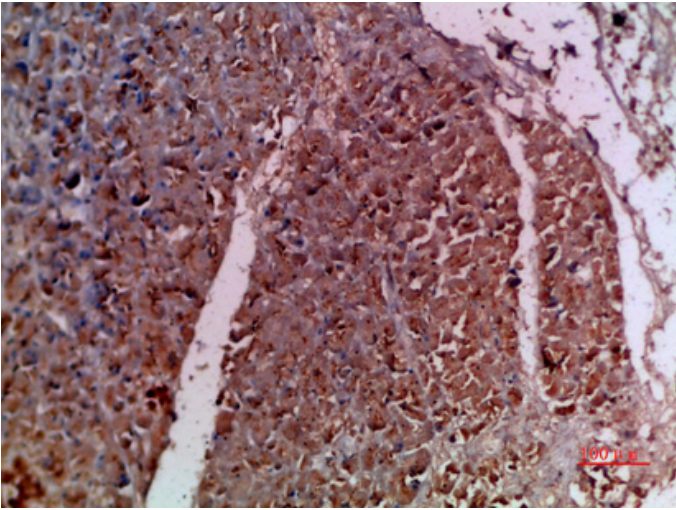




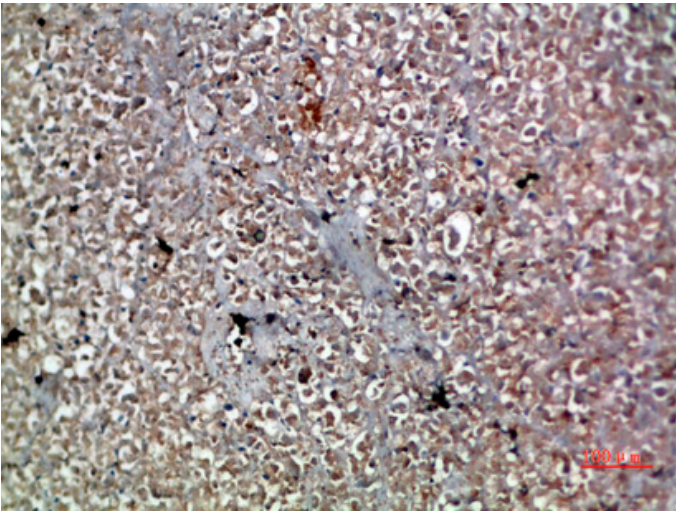
IL-20 Polyclonal Antibody

Catalog_no :	AT5962
Applications :	IHC-p,ELISA
Reactivity :	Human,Mouse,Rat
Category :	抗原抗体
Size :	100µg/50µg/20µg
Gene_name :	IL20 ZCYTO10 UNQ852/PRO1801
Protein_name :	Interleukin-20 (IL-20) (Cytokine Zcyto10)
Humangene_id	50604
:	
Humanswissprot	Q9NYY1
_no :	
Immunogen :	Synthetic peptide from human protein at AA range: 81-130
Specificity :	The antibody detects endogenous IL-20
Formulation :	Liquid in PBS containing 50% glycerol, 0.5% BSA and 0.02% sodium azide.
Source :	Rabbit
Dilution :	IHC-p 1:50-200, ELISA 1:10000-20000
Purification :	The antibody was affinity-purified from rabbit antiserum by affinity-chromatography using epitope-specific immunogen.
Concentration :	1 mg/ml
Storage_stability	-20°C/1 year
:	
Msds :	MSDS_Antibody.pdf
Other_name :	Interleukin-20 (IL-20) (Cytokine Zcyto10)

Product Images



Immunohistochemical analysis of paraffin-embedded human-pancreas, antibody was diluted at 1:200



Immunohistochemical analysis of paraffin-embedded human-pancreas, antibody was diluted at 1:200