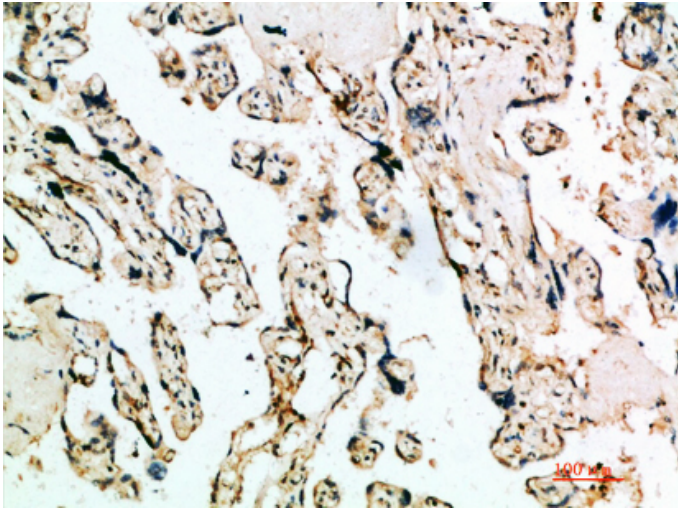


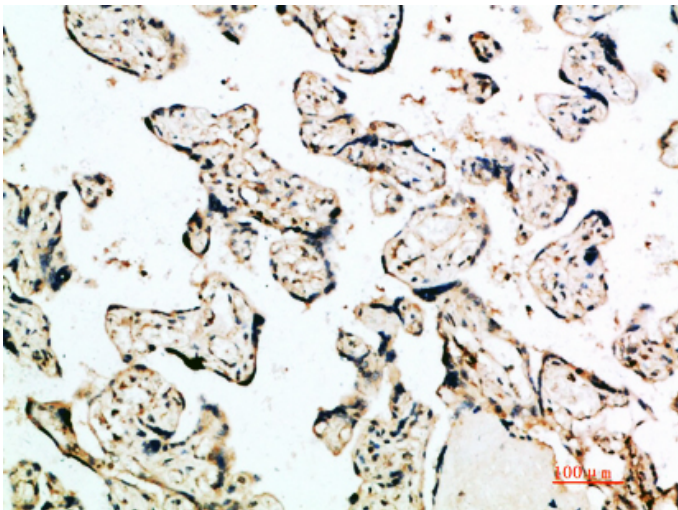
IFN- $\beta$  Polyclonal Antibody

Catalog_no :	AT5964
Applications :	IHC-p,ELISA
Reactivity :	Human
Category :	抗原抗体
Size :	100 $\mu$ g/50 $\mu$ g/20 $\mu$ g
Gene_name :	IFNB1 IFB IFNB
Protein_name :	Interferon beta (IFN-beta) (Fibroblast interferon)
Humangene_id :	<a href="#">3456</a>
Humanswissprot_no :	<a href="#">P01574</a>
Immunogen :	Synthetic peptide from human protein at AA range: 91-140
Specificity :	The antibody detects endogenous IFN- $\beta$
Formulation :	Liquid in PBS containing 50% glycerol, 0.5% BSA and 0.02% sodium azide.
Source :	Rabbit
Dilution :	IHC-p 1:50-200, ELISA 1:10000-20000
Purification :	The antibody was affinity-purified from rabbit antiserum by affinity-chromatography using epitope-specific immunogen.
Concentration :	1 mg/ml
Storage_stability :	-20°C/1 year
Msds :	<a href="#">MSDS_Antibody.pdf</a>
Other_name :	Interferon beta (IFN-beta) (Fibroblast interferon)

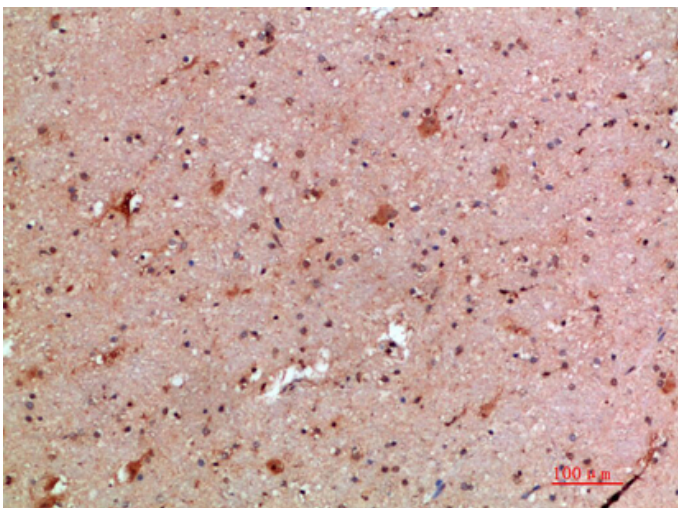
## Product Images



Immunohistochemical analysis of paraffin-embedded human-placenta, antibody was diluted at 1:200



Immunohistochemical analysis of paraffin-embedded human-placenta, antibody was diluted at 1:200



Immunohistochemical analysis of paraffin-embedded human-brain, antibody was diluted at 1:200

Immunohistochemical analysis of paraffin-embedded human-brain, antibody was diluted at 1:200

