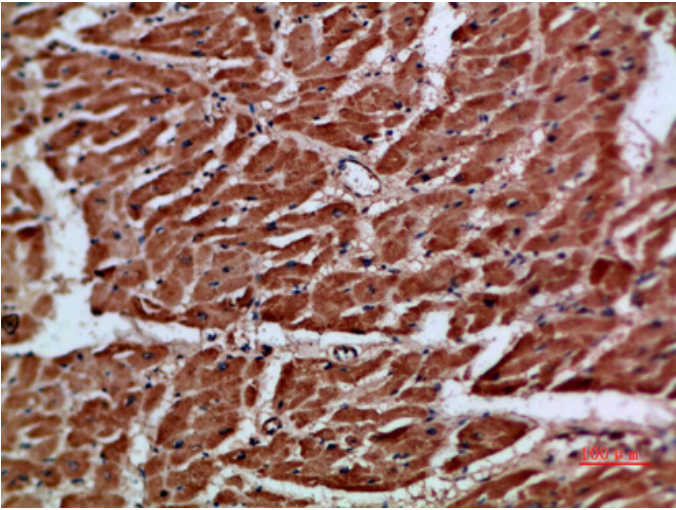


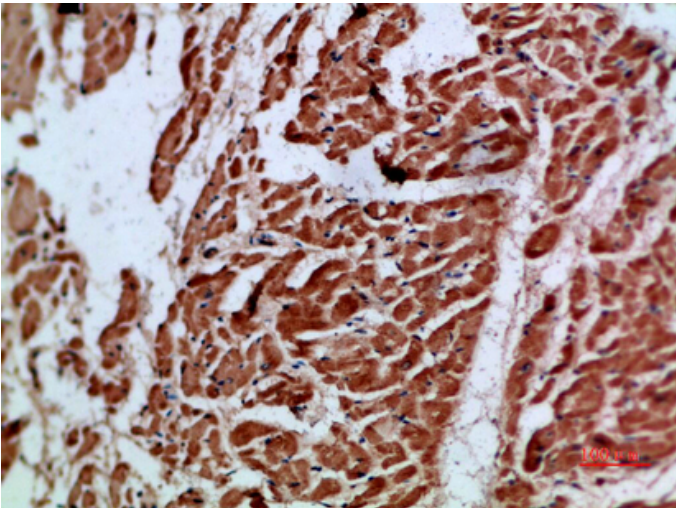
## Artn Polyclonal Antibody

Catalog_no :	<u>AT5965</u>
Applications :	<u>IHC-p,ELISA</u>
Reactivity :	<u>Human</u>
Category :	<u>抗原抗体</u>
Size :	<u>100µg/50µg/20µg</u>
Gene_name :	<u>ARTN EVN</u>
Protein_name :	<u>Artemin (Enovin) (Neublastin)</u>
Humangene_id	<u><a href="#">9048</a></u>
:	<u></u>
Humanswissprot	<u><a href="#">Q5T4W7</a></u>
_no :	<u></u>
Immunogen :	<u>Synthetic peptide from human protein at AA range: 101-150</u>
Specificity :	<u>The antibody detects endogenous Artn</u>
Formulation :	<u>Liquid in PBS containing 50% glycerol, 0.5% BSA and 0.02% sodium azide.</u>
Source :	<u>Rabbit</u>
Dilution :	<u>IHC-p 1:50-200, ELISA 1:10000-20000</u>
Purification :	<u>The antibody was affinity-purified from rabbit antiserum by affinity-chromatography using epitope-specific immunogen.</u>
Concentration :	<u>1 mg/ml</u>
Storage_stability	<u>-20°C/1 year</u>
:	<u></u>
Msds :	<u>MSDS_Antibody.pdf</u>
Other_name :	<u>Artemin (Enovin) (Neublastin)</u>

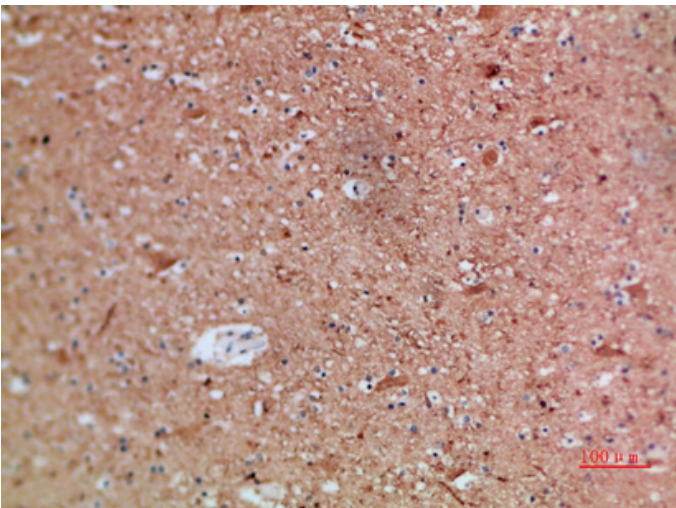
## Product Images



Immunohistochemical analysis of paraffin-embedded human-heart, antibody was diluted at 1:200



Immunohistochemical analysis of paraffin-embedded human-heart, antibody was diluted at 1:200



Immunohistochemical analysis of paraffin-embedded human-brain, antibody was diluted at 1:200

Immunohistochemical analysis of paraffin-embedded human-brain, antibody was diluted at 1:200

