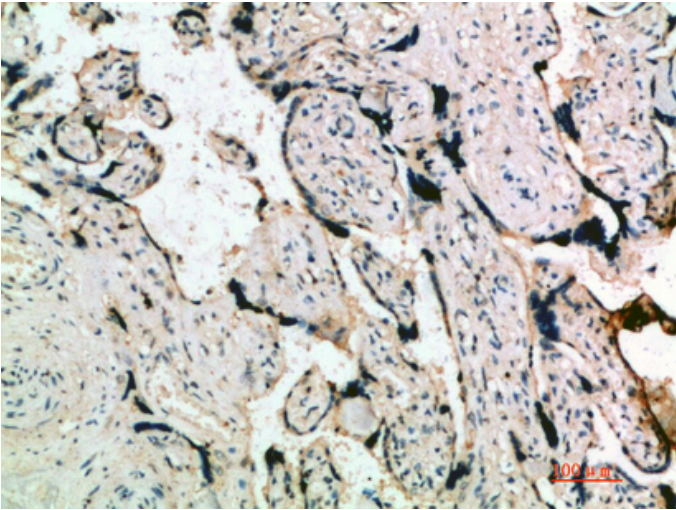


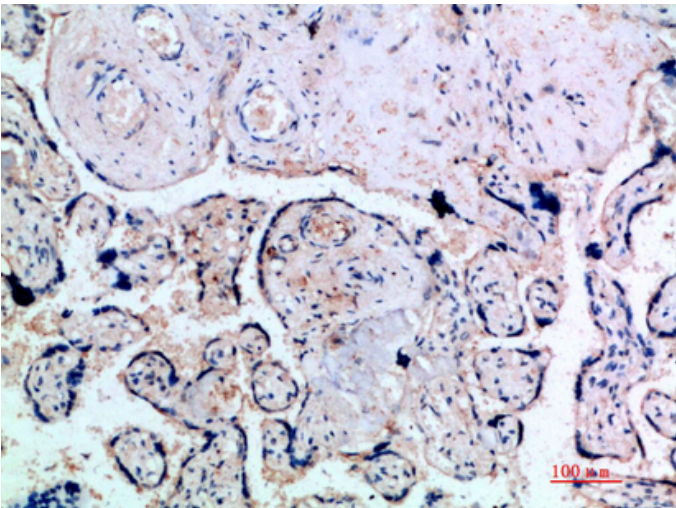
Inhibin α Polyclonal Antibody

| | |
|-------------------|--|
| Catalog_no : | <u>AT5967</u> |
| Applications : | <u>IHC-p,ELISA</u> |
| Reactivity : | <u>Human,Mouse,Rat</u> |
| Category : | <u>抗原抗体</u> |
| Size : | <u>100μg/50μg/20μg</u> |
| Gene_name : | <u>INHA</u> |
| Protein_name : | <u>Inhibin alpha chain</u> |
| Humangene_id | <u>3623</u> |
| : | <u></u> |
| Humanswissprot | <u>P05111</u> |
| _no : | <u></u> |
| Immunogen : | <u>Synthetic peptide from human protein at AA range: 211-260</u> |
| Specificity : | <u>The antibody detects endogenous Inhibin α</u> |
| Formulation : | <u>Liquid in PBS containing 50% glycerol, 0.5% BSA and 0.02% sodium azide.</u> |
| Source : | <u>Rabbit</u> |
| Dilution : | <u>IHC-p 1:50-200, ELISA 1:10000-20000</u> |
| Purification : | <u>The antibody was affinity-purified from rabbit antiserum by affinity-chromatography using epitope-specific immunogen.</u> |
| Concentration : | <u>1 mg/ml</u> |
| Storage_stability | <u>-20°C/1 year</u> |
| : | <u></u> |
| Msds : | <u>MSDS_Antibody.pdf</u> |
| Other_name : | <u>Inhibin alpha chain</u> |

Product Images



Immunohistochemical analysis of paraffin-embedded human-placenta, antibody was diluted at 1:200



Immunohistochemical analysis of paraffin-embedded human-placenta, antibody was diluted at 1:200