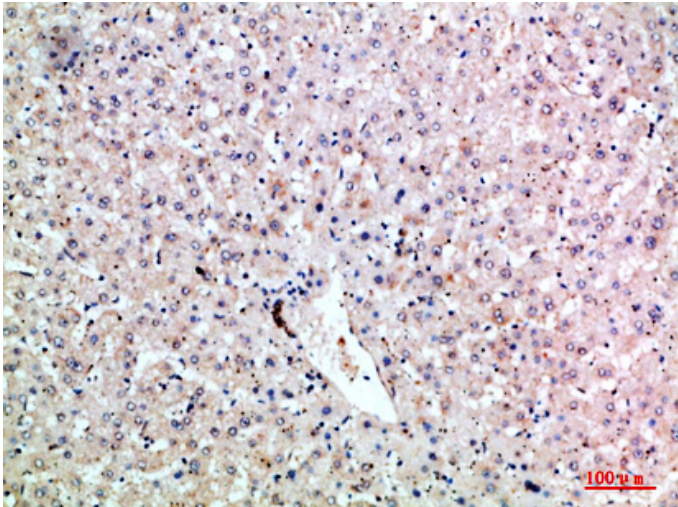


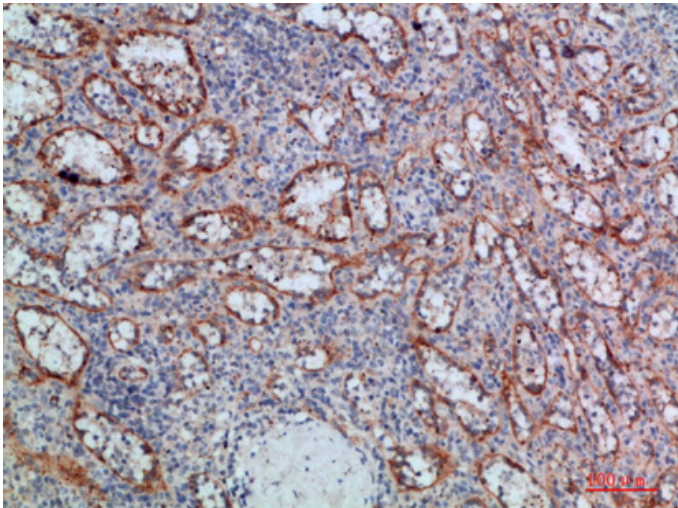
LT- β Polyclonal Antibody

Catalog_no :	AT5971
Applications :	IHC-p,ELISA
Reactivity :	Human
Category :	抗原抗体
Size :	100 μ g/50 μ g/20 μ g
Gene_name :	LTB TNFC TNFSF3
Protein_name :	Lymphotoxin-beta (LT-beta) (Tumor necrosis factor C) (TNF-C) (Tumor necrosis factor ligand superfamily member 3)
Humangene_id :	4050
Humanswissprot_no :	Q06643
Immunogen :	Synthetic peptide from human protein at AA range: 41-90
Specificity :	The antibody detects endogenous LT- β
Formulation :	Liquid in PBS containing 50% glycerol, 0.5% BSA and 0.02% sodium azide.
Source :	Rabbit
Dilution :	IHC-p 1:50-200, ELISA 1:10000-20000
Purification :	The antibody was affinity-purified from rabbit antiserum by affinity-chromatography using epitope-specific immunogen.
Concentration :	1 mg/ml
Storage_stability :	-20°C/1 year
Msds :	MSDS_Antibody.pdf
Other_name :	Lymphotoxin-beta (LT-beta) (Tumor necrosis factor C) (TNF-C) (Tumor necrosis factor ligand superfamily member 3)

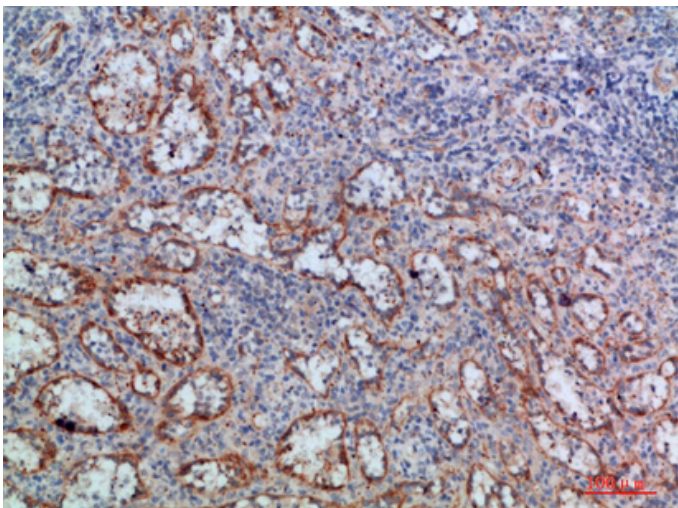
Product Images



Immunohistochemical analysis of paraffin-embedded human-liver, antibody was diluted at 1:200



Immunohistochemical analysis of paraffin-embedded human-spleen, antibody was diluted at 1:200



Immunohistochemical analysis of paraffin-embedded human-spleen, antibody was diluted at 1:200