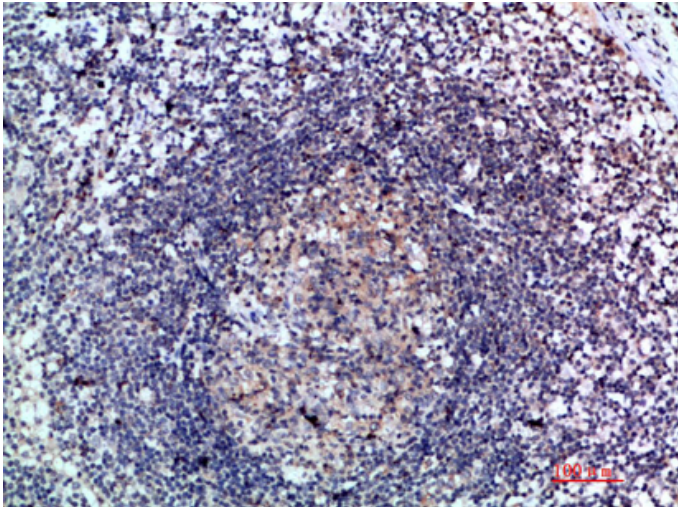


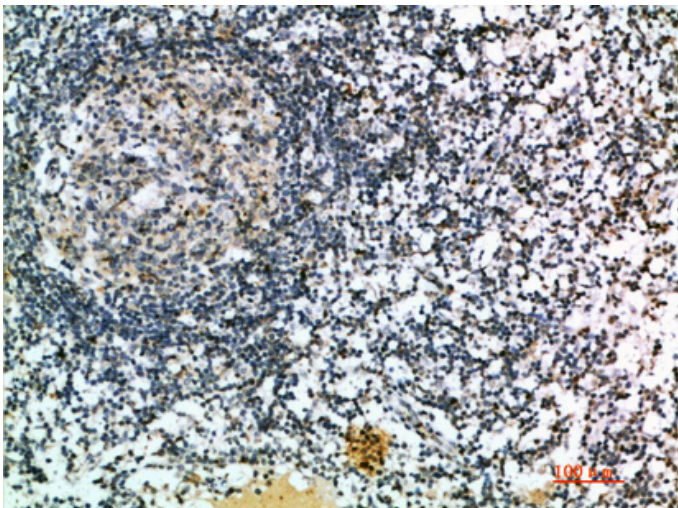
6CKine Polyclonal Antibody

Catalog_no :	AT5973
Applications :	IHC-p,ELISA
Reactivity :	Human
Category :	抗原抗体
Size :	100µg/50µg/20µg
Gene_name :	CCL21 SCYA21 UNQ784/PRO1600
Protein_name :	C-C motif chemokine 21 (6CKine) (Beta-chemokine exodus-2) (Secondary lymphoid-tissue chemokine) (SLC) (Small-inducible cytokine A21)
Humangene_id :	6366
Humanswissprot_no :	O00585
Immunogen :	The antiserum was produced against synthesized peptide derived from the Internal region of human CCL21. AA range:71-120
Specificity :	The antibody detects endogenous 6CKine
Formulation :	Liquid in PBS containing 50% glycerol, 0.5% BSA and 0.02% sodium azide.
Source :	Rabbit
Dilution :	IHC-p 1:50-200, ELISA 1:10000-20000
Purification :	The antibody was affinity-purified from rabbit antiserum by affinity-chromatography using epitope-specific immunogen.
Concentration :	1 mg/ml
Storage_stability :	-20°C/1 year
Msds :	MSDS_Antibody.pdf
Other_name :	C-C motif chemokine 21 (6CKine) (Beta-chemokine exodus-2) (Secondary lymphoid-tissue chemokine) (SLC) (Small-inducible cytokine A21)

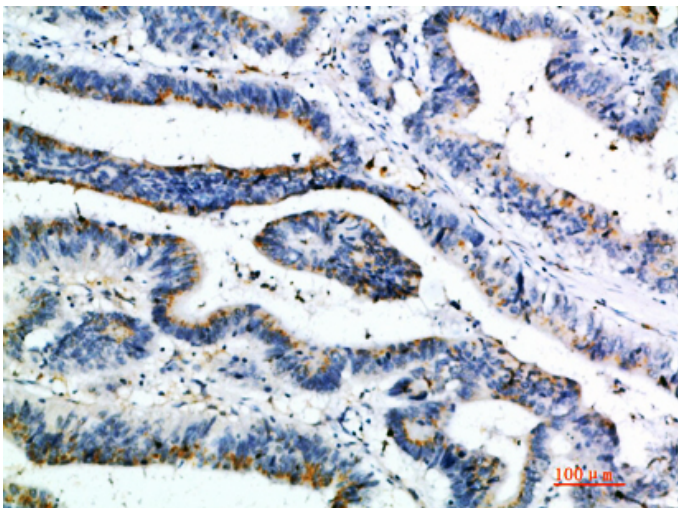
Product Images



Immunohistochemical analysis of paraffin-embedded human-lymph, antibody was diluted at 1:200



Immunohistochemical analysis of paraffin-embedded human-lymph, antibody was diluted at 1:200



Immunohistochemical analysis of paraffin-embedded human-colon-cancer, antibody was diluted at 1:200

Immunohistochemical analysis of paraffin-embedded human-colon-cancer, antibody was diluted at 1:200

