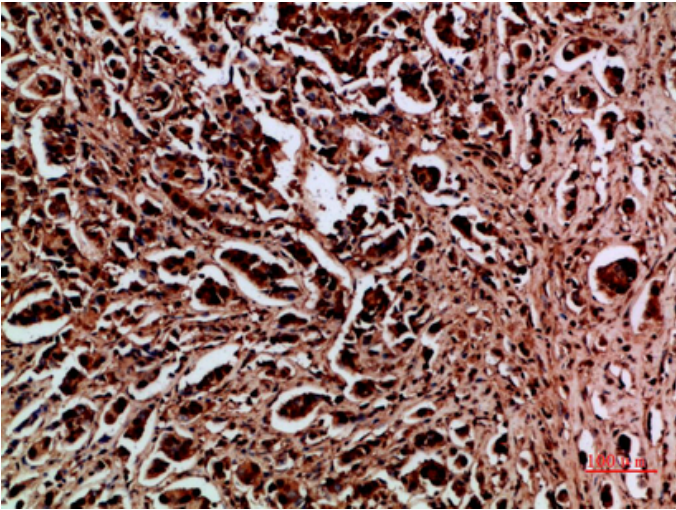


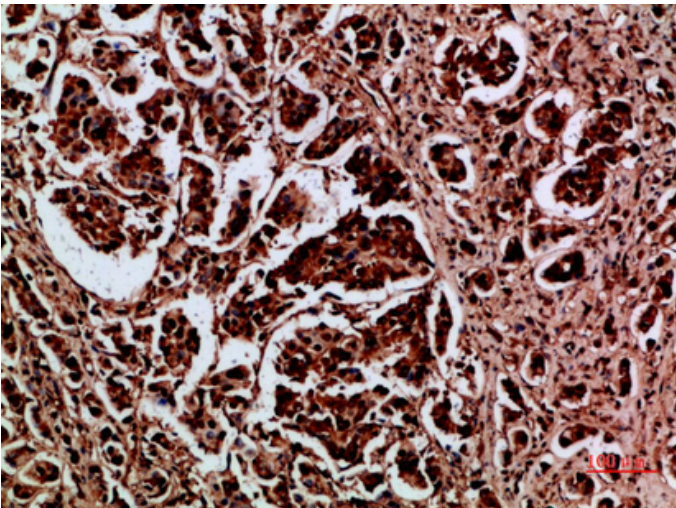
HDGF Polyclonal Antibody

| | |
|---------------------|--|
| Catalog_no : | <u>AT5974</u> |
| Applications : | <u>IHC-p,ELISA</u> |
| Reactivity : | <u>Human</u> |
| Category : | <u>抗原抗体</u> |
| Size : | <u>100µg/50µg/20µg</u> |
| Gene_name : | <u>HDGF HMG1L2</u> |
| Protein_name : | <u>Hepatoma-derived growth factor (HDGF) (High mobility group protein 1-like 2) (HMG-1L2)</u> |
| Humangene_id : | <u>3068</u> |
| Humanswissprot_no : | <u>P51858</u> |
| Immunogen : | <u>Synthetic peptide from human protein at AA range: 141-190</u> |
| Specificity : | <u>The antibody detects endogenous HDGF</u> |
| Formulation : | <u>Liquid in PBS containing 50% glycerol, 0.5% BSA and 0.02% sodium azide.</u> |
| Source : | <u>Rabbit</u> |
| Dilution : | <u>IHC-p 1:50-200, ELISA 1:10000-20000</u> |
| Purification : | <u>The antibody was affinity-purified from rabbit antiserum by affinity-chromatography using epitope-specific immunogen.</u> |
| Concentration : | <u>1 mg/ml</u> |
| Storage_stability : | <u>-20°C/1 year</u> |
| Msds : | <u>MSDS_Antibody.pdf</u> |
| Other_name : | <u>Hepatoma-derived growth factor (HDGF) (High mobility group protein 1-like 2) (HMG-1L2)</u> |

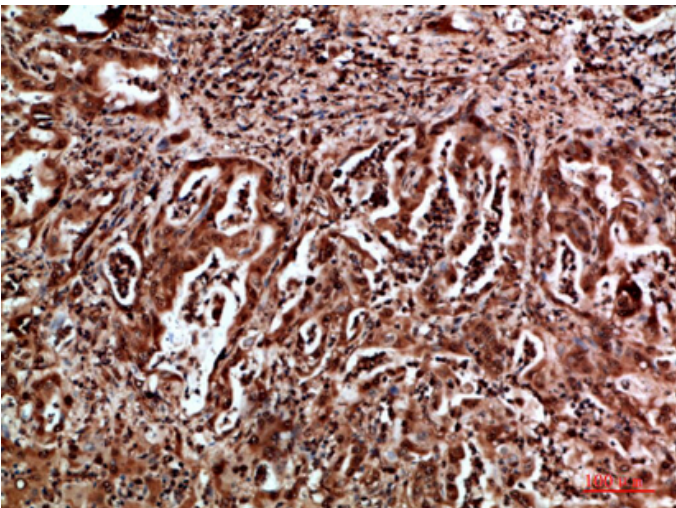
Product Images



Immunohistochemical analysis of paraffin-embedded human-breast-cancer, antibody was diluted at 1:200

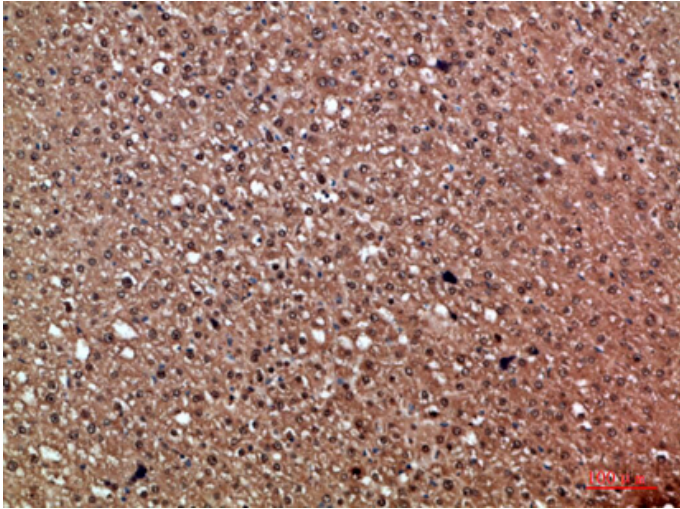


Immunohistochemical analysis of paraffin-embedded human-breast-cancer, antibody was diluted at 1:200

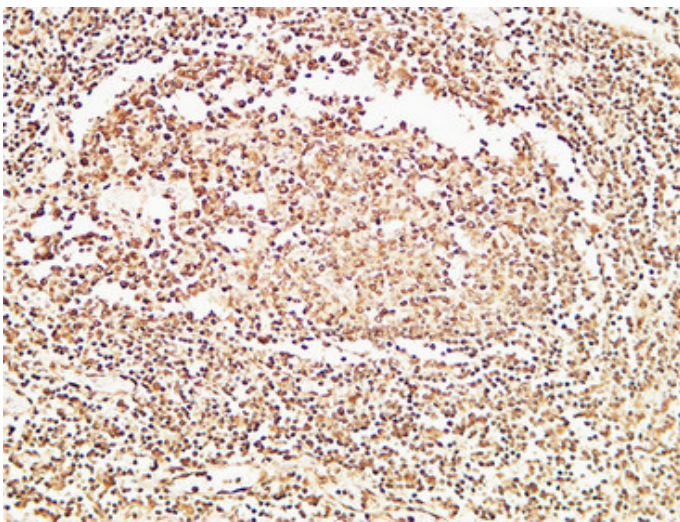


Immunohistochemical analysis of paraffin-embedded human-liver-cancer, antibody was diluted at 1:200

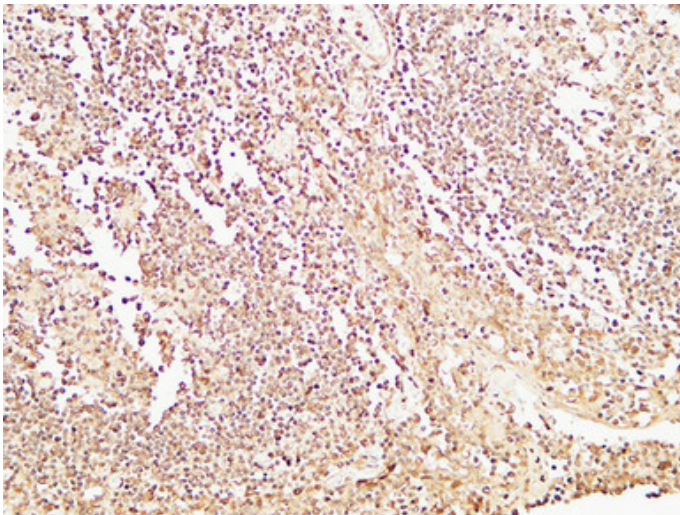
Immunohistochemical analysis of paraffin-embedded human-liver-cancer, antibody was diluted at 1:200



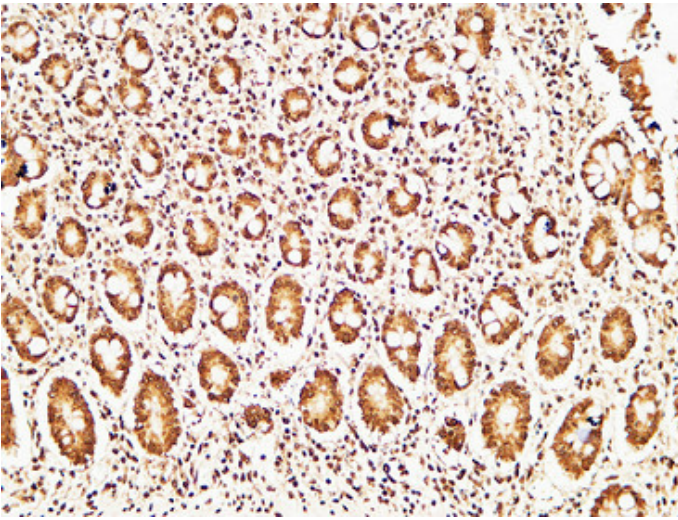
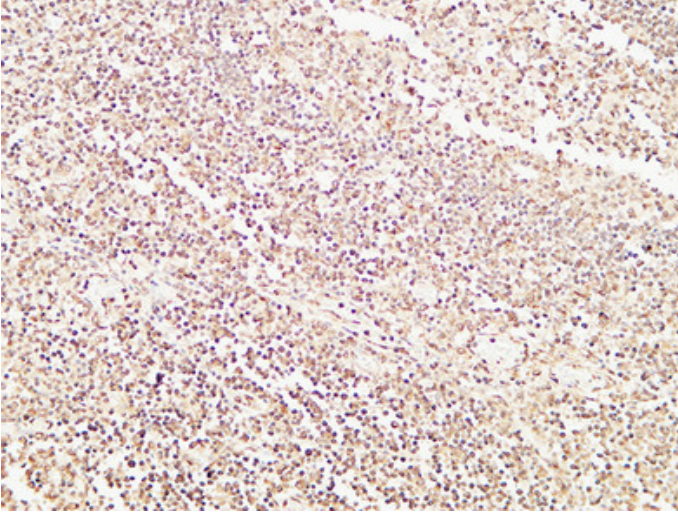
Immunohistochemical analysis of paraffin-embedded Human Amygdala. 1, Antibody was diluted at 1:200(4°,overnight). 2, High-pressure and temperature EDTA, pH8.0 was used for antigen retrieval. 3,Secondary antibody was diluted at 1:200(room temperature, 30min).



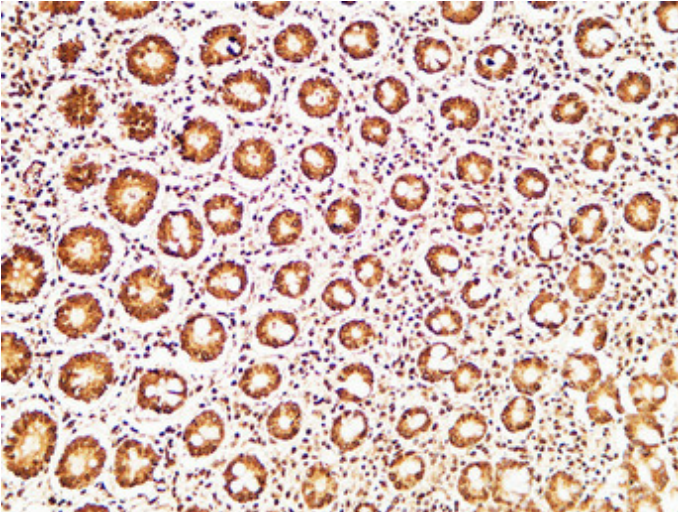
Immunohistochemical analysis of paraffin-embedded Human Amygdala. 1, Antibody was diluted at 1:200(4°,overnight). 2, High-pressure and temperature EDTA, pH8.0 was used for antigen retrieval. 3,Secondary antibody was diluted at 1:200(room temperature, 30min).



Immunohistochemical analysis of paraffin-embedded Human Amygdala. 1, Antibody was diluted at 1:200(4°,overnight). 2, High-pressure and temperature EDTA, pH8.0 was used for antigen retrieval. 3,Secondary antibody was diluted at 1:200(room temperature, 30min).



Immunohistochemical analysis of paraffin-embedded Human colon. 1, Antibody was diluted at 1:200(4°,overnight). 2, High-pressure and temperature EDTA, pH8.0 was used for antigen retrieval. 3,Secondary antibody was diluted at 1:200(room temperature, 30min).



Immunohistochemical analysis of paraffin-embedded Human colon. 1, Antibody was diluted at 1:200(4°,overnight). 2, High-pressure and temperature EDTA, pH8.0 was used for antigen retrieval. 3,Secondary antibody was diluted at 1:200(room temperature, 30min).

Immunohistochemical analysis of paraffin-embedded Human colon. 1, Antibody was diluted at 1:200(4°,overnight). 2, High-pressure and temperature EDTA, pH8.0 was used for antigen retrieval. 3,Secondary antibody was diluted at 1:200(room temperature, 30min).

