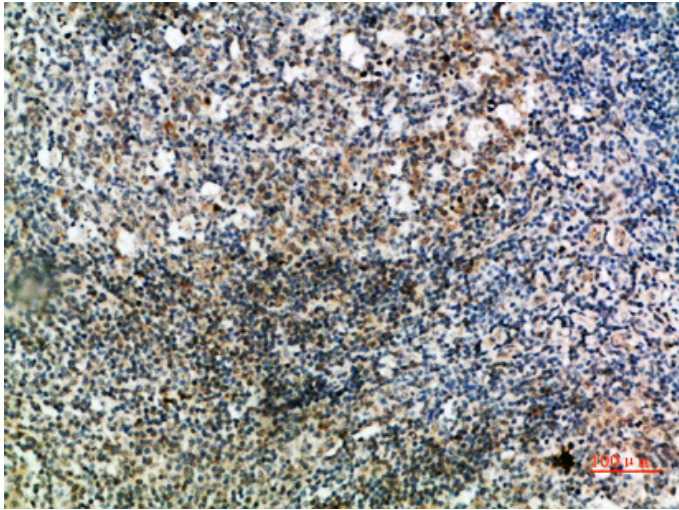


IgD Polyclonal Antibody

Catalog_no :	AT5979
Applications :	IHC-p,ELISA
Reactivity :	Human
Category :	抗原抗体
Size :	100µg/50µg/20µg
Gene_name :	IGHD
Protein_name :	Ig delta chain C region
Humangene_id	0
:	
Humanswissprot	P01880
_no :	
Immunogen :	Synthetic peptide from human protein at AA range: 111-160
Specificity :	The antibody detects endogenous IgD
Formulation :	Liquid in PBS containing 50% glycerol, 0.5% BSA and 0.02% sodium azide.
Source :	Rabbit
Dilution :	IHC-p 1:50-200, ELISA 1:10000-20000
Purification :	The antibody was affinity-purified from rabbit antiserum by affinity-chromatography using epitope-specific immunogen.
Concentration :	1 mg/ml
Storage_stability	-20°C/1 year
:	
Msds :	MSDS_Antibody.pdf
Other_name :	Ig delta chain C region

Product Images



Immunohistochemical analysis of paraffin-embedded human-tonsil, antibody was diluted at 1:200