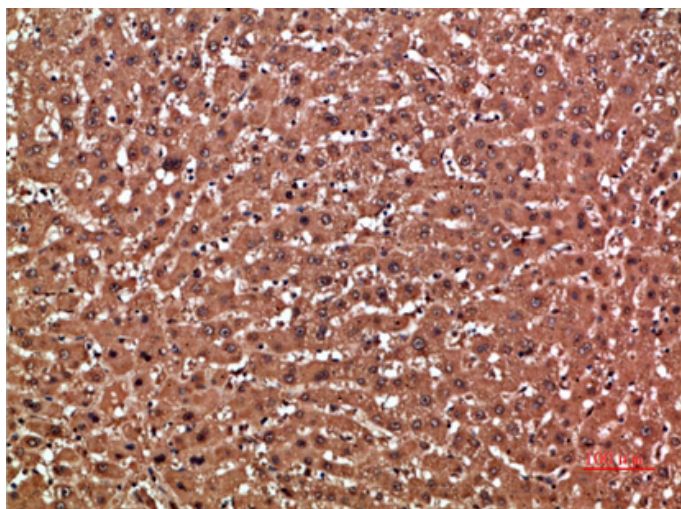


GSTA1 Polyclonal Antibody

Catalog_no :	AT5981
Applications :	IHC-p,ELISA
Reactivity :	Human
Category :	抗原抗体
Size :	100µg/50µg/20µg
Gene_name :	GSTA1
Protein_name :	Glutathione S-transferase A1 (EC 2.5.1.18) (GST HA subunit 1) (GST class-alpha member 1) (GST-epsilon) (GSTA1-1) (GTH1)
Humangene_id :	2938
Humanswissprot_no :	P08263
Immunogen :	The antiserum was produced against synthesized peptide derived from the Internal region of human GSTA1. AA range:91-140
Specificity :	The antibody detects endogenous GSTA1
Formulation :	Liquid in PBS containing 50% glycerol, 0.5% BSA and 0.02% sodium azide.
Source :	Rabbit
Dilution :	IHC-p 1:50-200, ELISA 1:10000-20000
Purification :	The antibody was affinity-purified from rabbit antiserum by affinity-chromatography using epitope-specific immunogen.
Concentration :	1 mg/ml
Storage_stability :	-20°C/1 year
Msds :	MSDS_Antibody.pdf
Other_name :	Glutathione S-transferase A1 (EC 2.5.1.18) (GST HA subunit 1) (GST class-alpha member 1) (GST-epsilon) (GSTA1-1) (GTH1)

Product Images



Immunohistochemical analysis of paraffin-embedded human-liver, antibody was diluted at 1:200