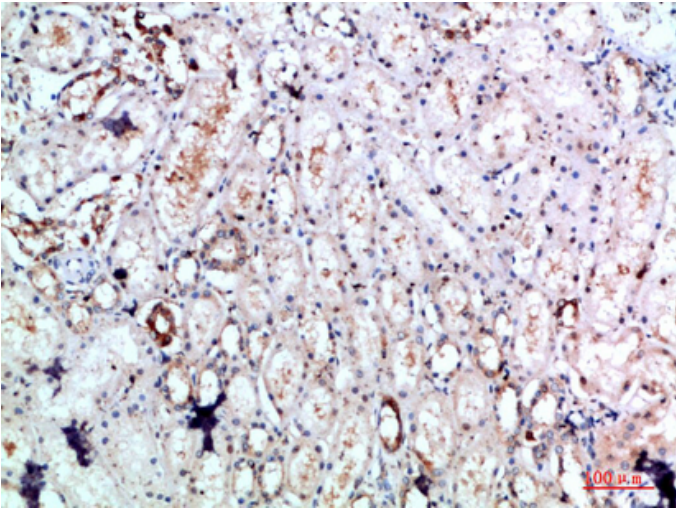




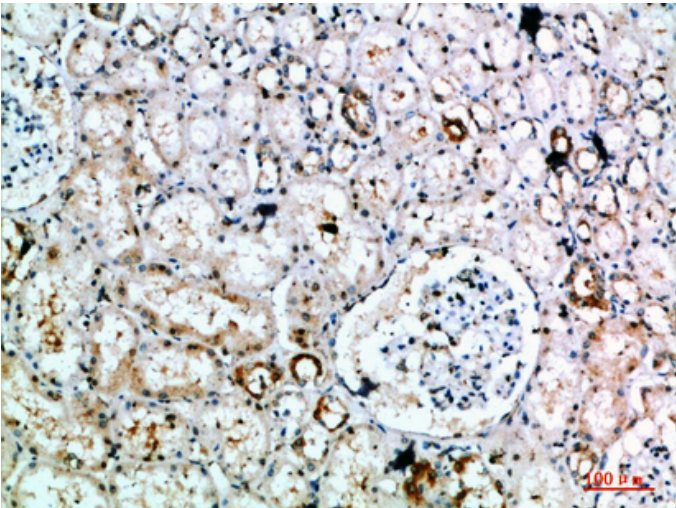
DLEU7 Polyclonal Antibody

Catalog_no :	<u>AT5986</u>
Applications :	<u>IHC-p,ELISA</u>
Reactivity :	<u>Human</u>
Category :	<u>抗原抗体</u>
Size :	<u>100µg/50µg/20µg</u>
Gene_name :	<u>DLEU7 LEU7</u>
Protein_name :	<u>Leukemia-associated protein 7 (Deleted in lymphocytic leukemia 7)</u>
Humangene_id :	<u>220107</u>
Humanswissprot_no :	<u>Q6UYE1</u>
Immunogen :	<u>The antiserum was produced against synthesized peptide derived from the Internal region of human DLEU7. AA range:51-100</u>
Specificity :	<u>The antibody detects endogenous DLEU7</u>
Formulation :	<u>Liquid in PBS containing 50% glycerol, 0.5% BSA and 0.02% sodium azide.</u>
Source :	<u>Rabbit</u>
Dilution :	<u>IHC-p 1:50-200, ELISA 1:10000-20000</u>
Purification :	<u>The antibody was affinity-purified from rabbit antiserum by affinity-chromatography using epitope-specific immunogen.</u>
Concentration :	<u>1 mg/ml</u>
Storage_stability :	<u>-20°C/1 year</u>
Msds :	<u>MSDS_Antibody.pdf</u>
Other_name :	<u>Leukemia-associated protein 7 (Deleted in lymphocytic leukemia 7)</u>

Product Images



Immunohistochemical analysis of paraffin-embedded human-kidney, antibody was diluted at 1:200



Immunohistochemical analysis of paraffin-embedded human-kidney, antibody was diluted at 1:200