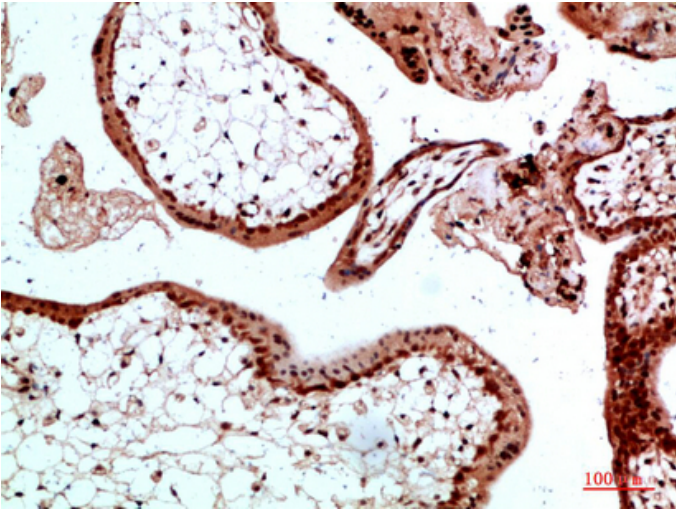




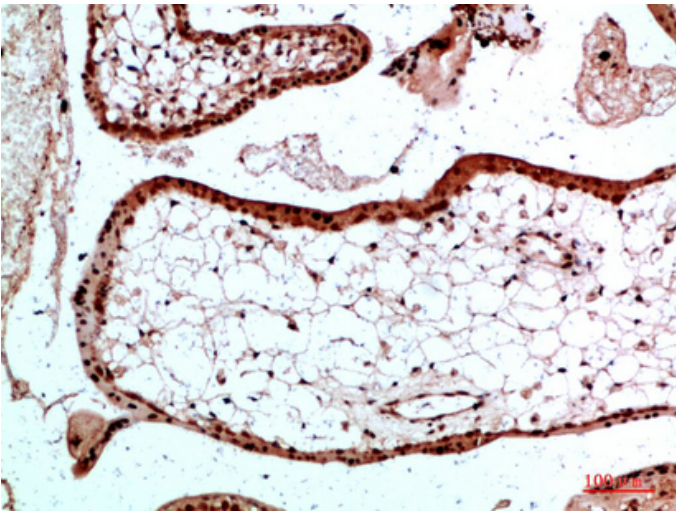
## Ub Polyclonal Antibody

|                     |   |
|---------------------|---|
| Catalog_no :        | AT5995  |
| Applications :      | IHC-p,ELISA   |
| Reactivity :        | Human,Mouse,Rat   |
| Category :          | 抗原抗体  |
| Size :              | 100µg/50µg/20µg   |
| Gene_name :         | ub  |
| Protein_name :      | Polyubiquitin-B [Cleaved into: Ubiquitin]   |
| Humangene_id :      | <a href="#">7314</a>  |
| Humanswissprot_no : | <a href="#">P0CG47/P0CG48/P62979/P62987</a>   |
| Immunogen :         | Synthetic peptide from human protein at AA range: 1-50  |
| Specificity :       | The antibody detects endogenous Ub  |
| Formulation :       | Liquid in PBS containing 50% glycerol, 0.5% BSA and 0.02% sodium azide.   |
| Source :            | Rabbit  |
| Dilution :          | IHC-p 1:50-200, ELISA 1:10000-20000   |
| Purification :      | The antibody was affinity-purified from rabbit antiserum by affinity-chromatography using epitope-specific immunogen. |
| Concentration :     | 1 mg/ml   |
| Storage_stability : | -20°C/1 year  |
| Msds :              | <a href="#">MSDS_Antibody.pdf</a>   |

## Product Images



Immunohistochemical analysis of paraffin-embedded human-placenta, antibody was diluted at 1:200



Immunohistochemical analysis of paraffin-embedded human-placenta, antibody was diluted at 1:200