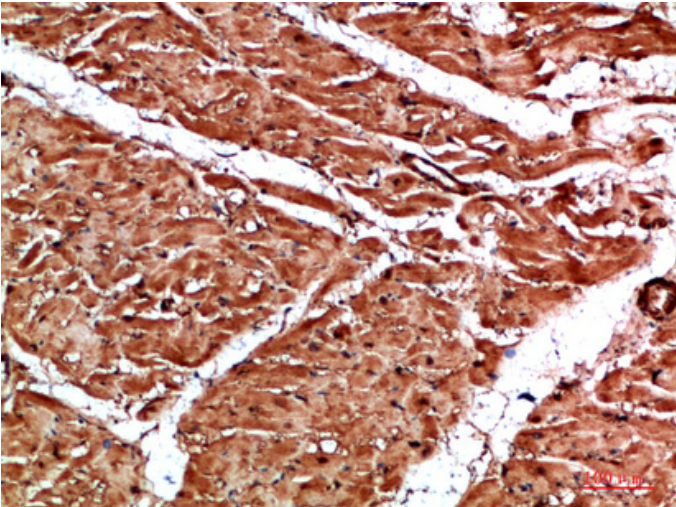


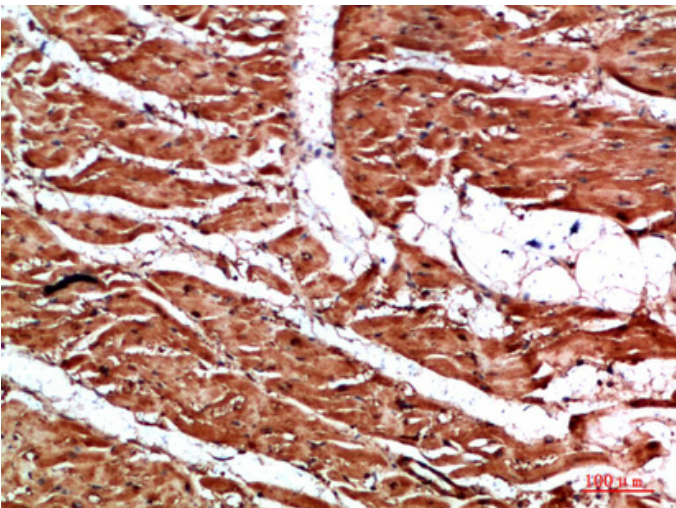
## TTN Polyclonal Antibody

Catalog_no :	AT6000
Applications :	IHC-p,ELISA
Reactivity :	Human,Mouse,Rat
Category :	抗原抗体
Size :	100µg/50µg/20µg
Gene_name :	TTN
Protein_name :	Titin (EC 2.7.11.1) (Connectin) (Rhabdomyosarcoma antigen MU-RMS-40.14)
Humangene_id :	<a href="#">7273</a>
Humanswissprot_no :	<a href="#">Q8WZ42</a>
Immunogen :	Synthetic peptide from human protein at AA range: 161-210
Specificity :	The antibody detects endogenous TTN
Formulation :	Liquid in PBS containing 50% glycerol, 0.5% BSA and 0.02% sodium azide.
Source :	Rabbit
Dilution :	IHC-p 1:50-200, ELISA 1:10000-20000
Purification :	The antibody was affinity-purified from rabbit antiserum by affinity-chromatography using epitope-specific immunogen.
Concentration :	1 mg/ml
Storage_stability :	-20°C/1 year
Msds :	<a href="#">MSDS_Antibody.pdf</a>
Other_name :	Titin (EC 2.7.11.1) (Connectin) (Rhabdomyosarcoma antigen MU-RMS-40.14)

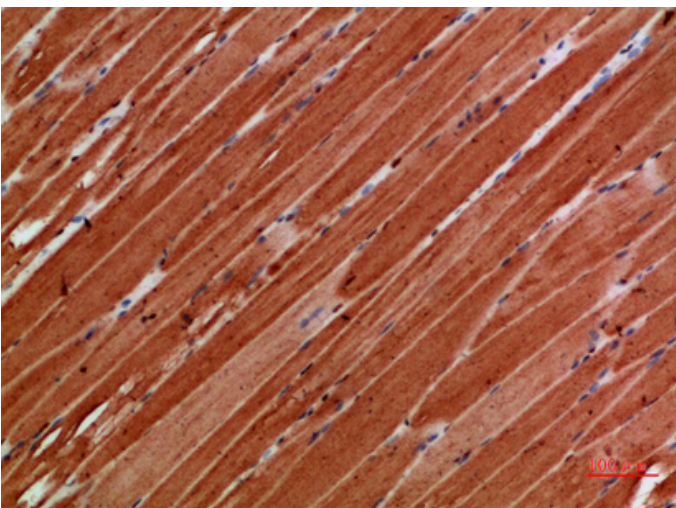
## Product Images



Immunohistochemical analysis of paraffin-embedded human-heart, antibody was diluted at 1:200



Immunohistochemical analysis of paraffin-embedded human-heart, antibody was diluted at 1:200



Immunohistochemical analysis of paraffin-embedded human-skeletal-muscle, antibody was diluted at 1:200

Immunohistochemical analysis of paraffin-embedded human-skeletal-muscle, antibody was diluted at 1:200

