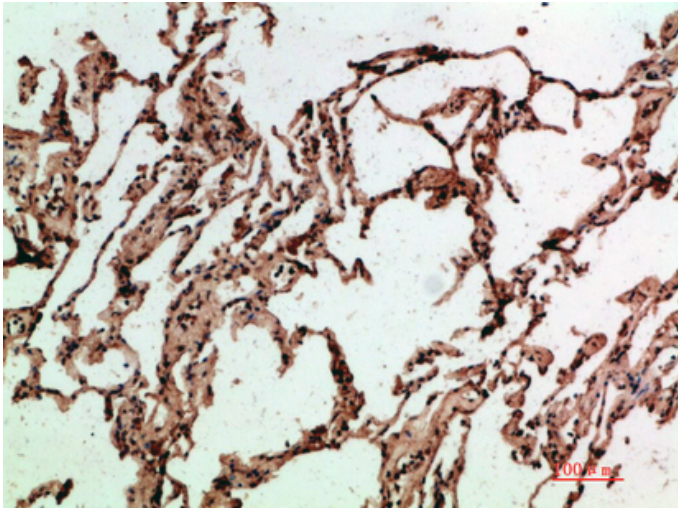


ADI1 Polyclonal Antibody

Catalog_no :	AT6002
Applications :	IHC-p,ELISA
Reactivity :	Human,Mouse,Rat
Category :	抗原抗体
Size :	100µg/50µg/20µg
Gene_name :	ADI1 MTCBP1 HMFT1638
Protein_name :	1,2-dihydroxy-3-keto-5-methylthiopentene dioxygenase (EC 1.13.11.54) (Acireductone dioxygenase (Fe(2+)-requiring)) (ARD) (Fe-ARD) (Membrane-type 1 matrix metalloproteinase cytoplasmic tail-binding protein 1) (MTCBP-1) (Submergence-induced protein-lik
Humangene_id :	55256
Humanswissprot_no :	Q9BV57
Immunogen :	The antiserum was produced against synthesized peptide derived from the Internal region of human ADI1. AA range:71-120
Specificity :	The antibody detects endogenous ADI1
Formulation :	Liquid in PBS containing 50% glycerol, 0.5% BSA and 0.02% sodium azide.
Source :	Rabbit
Dilution :	IHC-p 1:50-200, ELISA 1:10000-20000
Purification :	The antibody was affinity-purified from rabbit antiserum by affinity-chromatography using epitope-specific immunogen.
Concentration :	1 mg/ml
Storage_stability :	-20°C/1 year
Msds :	MSDS_Antibody.pdf
Other_name :	1,2-dihydroxy-3-keto-5-methylthiopentene dioxygenase (EC 1.13.11.54) (Acireductone dioxygenase (Fe(2+)-requiring)) (ARD) (Fe-ARD) (Membrane-type 1 matrix metalloproteinase cytoplasmic tail-binding protein 1) (MTCBP-1) (Submergence-induced protein-like factor) (Sip-L)

Product Images



Immunohistochemical analysis of paraffin-embedded human-lung, antibody was diluted at 1:200