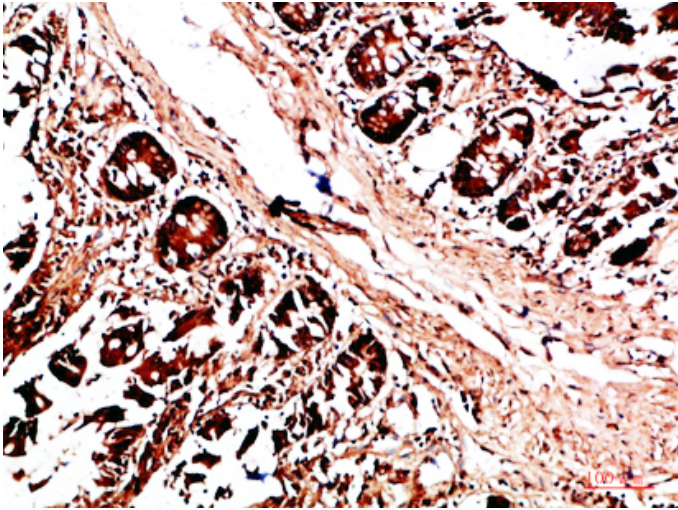


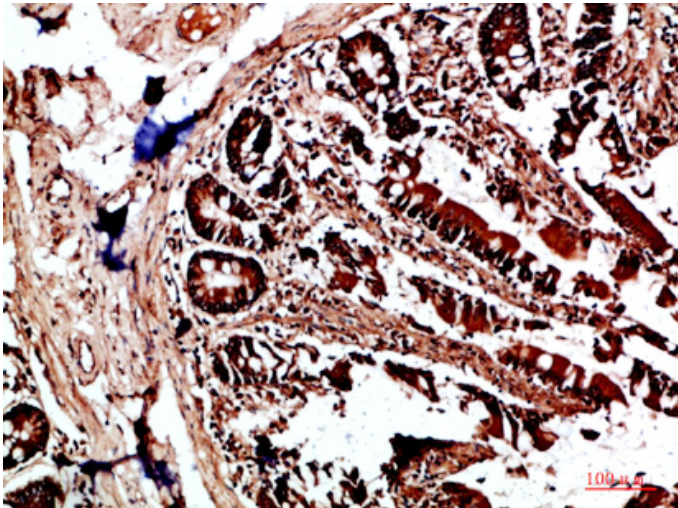
HLA-DQA1 Polyclonal Antibody

Catalog_no :	AT6003
Applications :	IHC-p,ELISA
Reactivity :	Human
Category :	抗原抗体
Size :	100µg/50µg/20µg
Gene_name :	HLA-DQA1
Protein_name :	HLA class II histocompatibility antigen, DQ alpha 1 chain (DC-1 alpha chain) (DC-alpha) (HLA-DCA) (MHC class II DQA1)
Humangene_id :	100509457
Humanswissprot_no :	P01909
Immunogen :	The antiserum was produced against synthesized peptide derived from the Internal region of human HLA-DQA1. AA range:21-70
Specificity :	The antibody detects endogenous HLA-DQA1
Formulation :	Liquid in PBS containing 50% glycerol, 0.5% BSA and 0.02% sodium azide.
Source :	Rabbit
Dilution :	IHC-p 1:50-200, ELISA 1:10000-20000
Purification :	The antibody was affinity-purified from rabbit antiserum by affinity-chromatography using epitope-specific immunogen.
Concentration :	1 mg/ml
Storage_stability :	-20°C/1 year
Msds :	MSDS_Antibody.pdf
Other_name :	HLA class II histocompatibility antigen, DQ alpha 1 chain (DC-1 alpha chain) (DC-alpha) (HLA-DCA) (MHC class II DQA1)

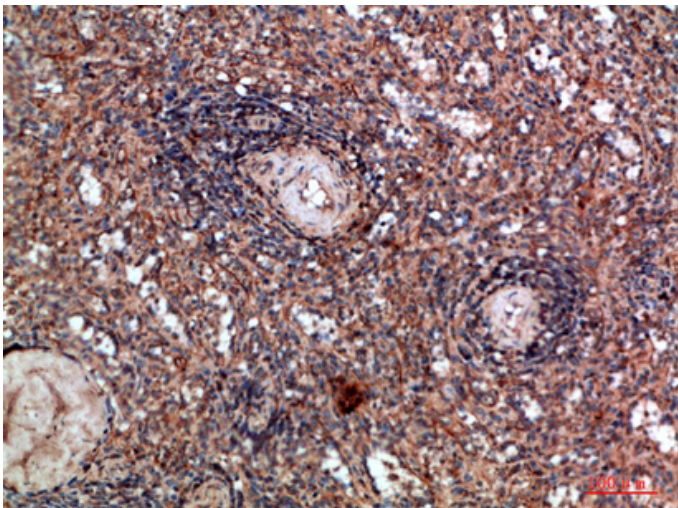
Product Images



Immunohistochemical analysis of paraffin-embedded human-colon, antibody was diluted at 1:200



Immunohistochemical analysis of paraffin-embedded human-colon, antibody was diluted at 1:200



Immunohistochemical analysis of paraffin-embedded human-spleen, antibody was diluted at 1:200

Immunohistochemical analysis of paraffin-embedded human-spleen, antibody was diluted at 1:200

