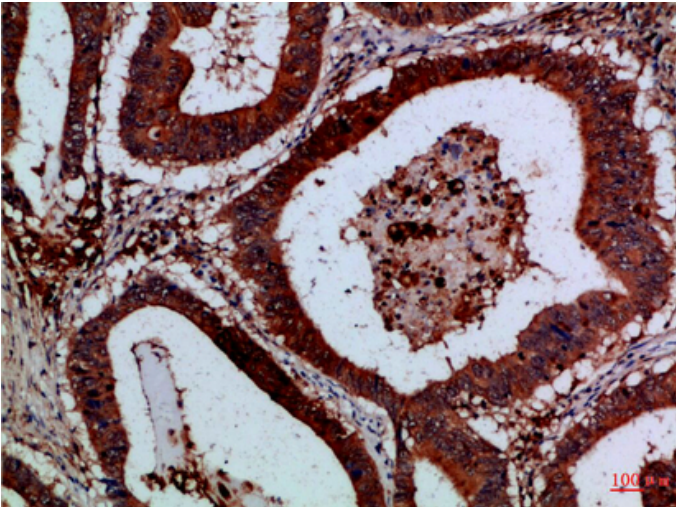


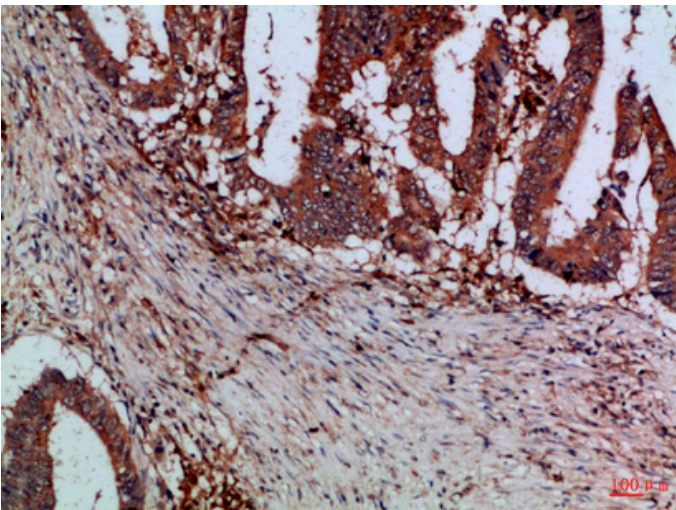
Cystatin B Polyclonal Antibody

Catalog_no :	<u>AT6009</u>
Applications :	<u>IHC-p,ELISA</u>
Reactivity :	<u>Human</u>
Category :	<u>抗原抗体</u>
Size :	<u>100µg/50µg/20µg</u>
Gene_name :	<u>CSTB CST6 STFB</u>
Protein_name :	<u>Cystatin-B (CPI-B) (Liver thiol proteinase inhibitor) (Stefin-B)</u>
Humangene_id	<u>1476</u>
:	<u></u>
Humanswissprot	<u>P04080</u>
_no :	<u></u>
Immunogen :	<u>Synthetic peptide from human protein at AA range: 20-60</u>
Specificity :	<u>The antibody detects endogenous Cystatin B</u>
Formulation :	<u>Liquid in PBS containing 50% glycerol, 0.5% BSA and 0.02% sodium azide.</u>
Source :	<u>Rabbit</u>
Dilution :	<u>IHC-p 1:50-200, ELISA 1:10000-20000</u>
Purification :	<u>The antibody was affinity-purified from rabbit antiserum by affinity-chromatography using epitope-specific immunogen.</u>
Concentration :	<u>1 mg/ml</u>
Storage_stability	<u>-20°C/1 year</u>
:	<u></u>
Msds :	<u>MSDS_Antibody.pdf</u>
Other_name :	<u>Cystatin-B (CPI-B) (Liver thiol proteinase inhibitor) (Stefin-B)</u>

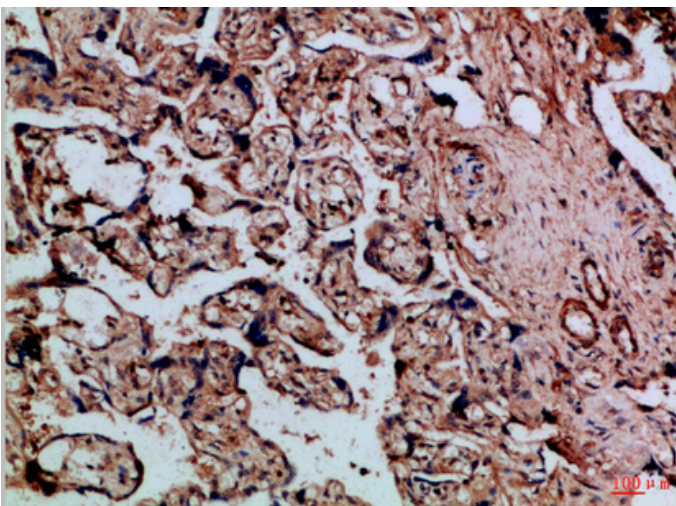
Product Images



Immunohistochemical analysis of paraffin-embedded Human-colon-cancer, antibody was diluted at 1:100



Immunohistochemical analysis of paraffin-embedded Human-colon-cancer, antibody was diluted at 1:100



Immunohistochemical analysis of paraffin-embedded Human-placenta, antibody was diluted at 1:100