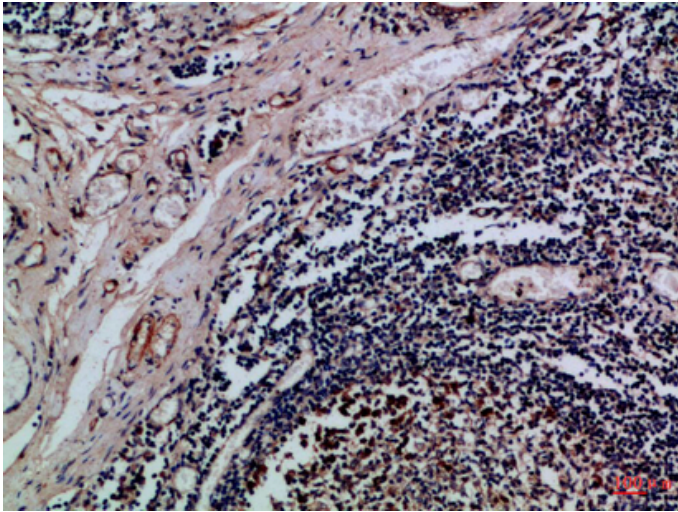


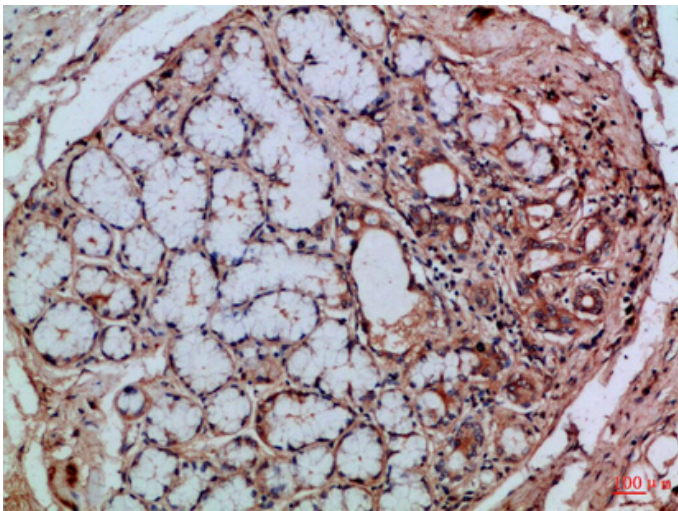
Integrin α E Polyclonal Antibody

Catalog_no :	AT6021
Applications :	IHC-p,ELISA
Reactivity :	Human
Category :	抗原抗体
Size :	100 μ g/50 μ g/20 μ g
Gene_name :	ITGAE
Protein_name :	Integrin alpha-E (HML-1 antigen) (Integrin alpha-IEL) (Mucosal lymphocyte 1 antigen) (CD antigen CD103) [Cleaved into: Integrin alpha-E light chain; Integrin alpha-E heavy chain]
Humangene_id :	3682
Humanswissprot_no :	P38570
Immunogen :	Synthetic peptide from human protein at AA range: 710-770
Specificity :	The antibody detects endogenous Integrin α E
Formulation :	Liquid in PBS containing 50% glycerol, 0.5% BSA and 0.02% sodium azide.
Source :	Rabbit
Dilution :	IHC-p 1:50-200, ELISA 1:10000-20000
Purification :	The antibody was affinity-purified from rabbit antiserum by affinity-chromatography using epitope-specific immunogen.
Concentration :	1 mg/ml
Storage_stability :	-20°C/1 year
Msds :	MSDS_Antibody.pdf
Other_name :	Integrin alpha-E (HML-1 antigen) (Integrin alpha-IEL) (Mucosal lymphocyte 1 antigen) (CD antigen CD103) [Cleaved into: Integrin alpha-E light chain; Integrin alpha-E heavy chain]

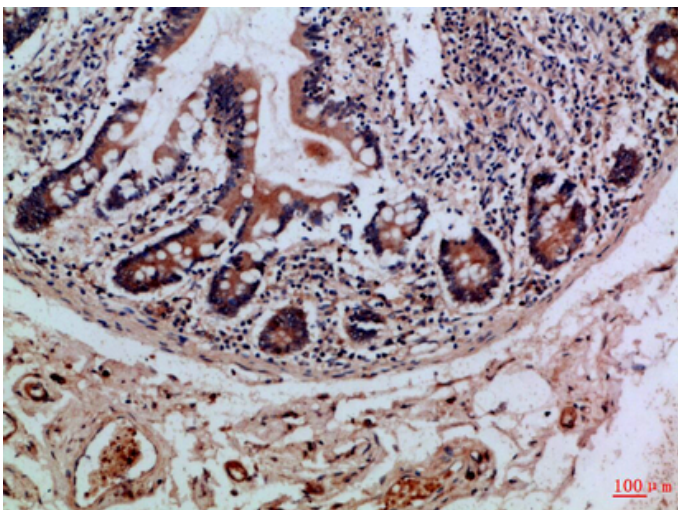
Product Images



Immunohistochemical analysis of paraffin-embedded Human-tonsil, antibody was diluted at 1:100



Immunohistochemical analysis of paraffin-embedded Human-tonsil, antibody was diluted at 1:100



Immunohistochemical analysis of paraffin-embedded Human-colon, antibody was diluted at 1:100