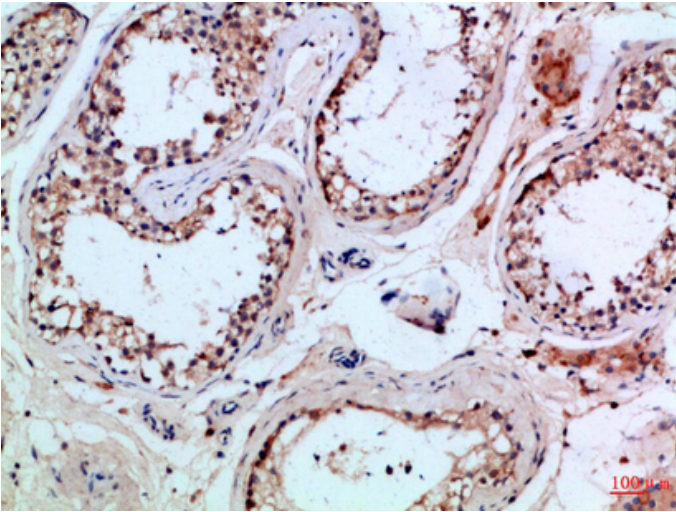


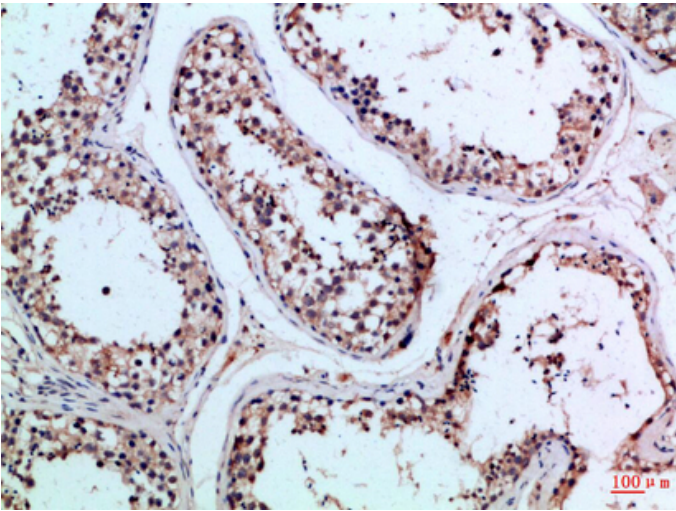
PI 3-Kinase p85 β Polyclonal Antibody

| | |
|---------------------|--|
| Catalog_no : | AT6024 |
| Applications : | IHC-p,ELISA |
| Reactivity : | Human,Mouse,Rat |
| Category : | 抗原抗体 |
| Size : | 100 μ g/50 μ g/20 μ g |
| Gene_name : | PIK3R2 |
| Protein_name : | Phosphatidylinositol 3-kinase regulatory subunit beta (PI3-kinase regulatory subunit beta) (PI3K regulatory subunit beta) (PtdIns-3-kinase regulatory subunit beta) (Phosphatidylinositol 3-kinase 85 kDa regulatory subunit beta) (PI3-kinase subunit p85) |
| Humangene_id : | 5296 |
| Humanswissprot_no : | O00459 |
| Immunogen : | Synthetic peptide from human protein at AA range: 1-60 |
| Specificity : | The antibody detects endogenous PI 3-Kinase p85 β |
| Formulation : | Liquid in PBS containing 50% glycerol, 0.5% BSA and 0.02% sodium azide. |
| Source : | Rabbit |
| Dilution : | IHC-p 1:50-200, ELISA 1:10000-20000 |
| Purification : | The antibody was affinity-purified from rabbit antiserum by affinity-chromatography using epitope-specific immunogen. |
| Concentration : | 1 mg/ml |
| Storage_stability : | -20°C/1 year |
| Msds : | MSDS_Antibody.pdf |
| Other_name : | Phosphatidylinositol 3-kinase regulatory subunit beta (PI3-kinase regulatory subunit beta) (PI3K regulatory subunit beta) (PtdIns-3-kinase regulatory subunit beta) (Phosphatidylinositol 3-kinase 85 kDa regulatory subunit beta) (PI3-kinase subunit p85-beta) (PtdIns-3-kinase regulatory subunit p85-beta) |

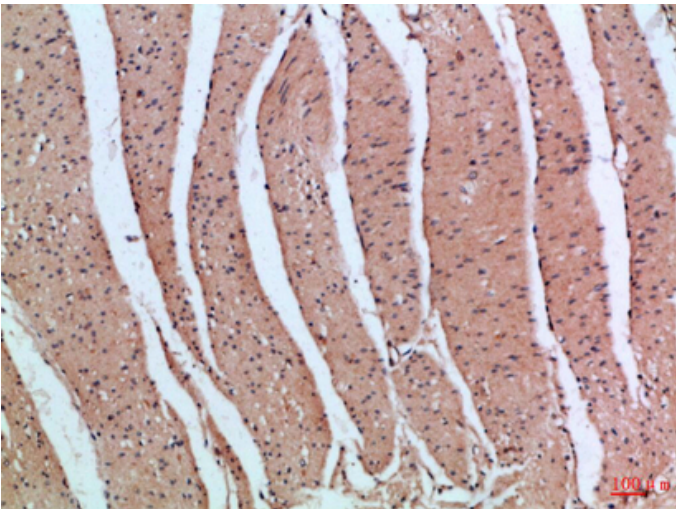
Product Images



Immunohistochemical analysis of paraffin-embedded Human-testis, antibody was diluted at 1:100



Immunohistochemical analysis of paraffin-embedded Human-testis, antibody was diluted at 1:100



Immunohistochemical analysis of paraffin-embedded Human-colon, antibody was diluted at 1:100

Immunohistochemical analysis of paraffin-embedded Human-colon, antibody was diluted at 1:100

