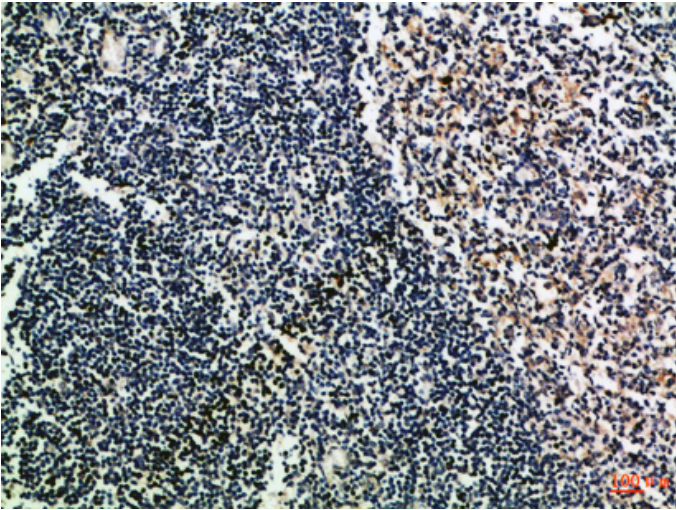


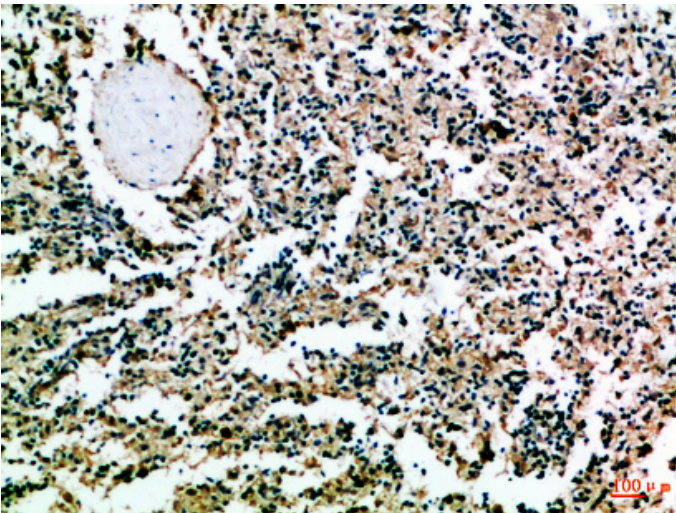
## CD52 Polyclonal Antibody

Catalog_no :	AT6029
Applications :	IHC-p,ELISA
Reactivity :	Human
Category :	抗原抗体
Size :	100µg/50µg/20µg
Gene_name :	CD52 CDW52 HE5
Protein_name :	CAMPATH-1 antigen (CDw52) (Cambridge pathology 1 antigen) (Epididymal secretory protein E5) (Human epididymis-specific protein 5) (He5) (CD antigen CD52)
Humangene_id :	<a href="#">1043</a>
Humanswissprot_no :	<a href="#">P31358</a>
Immunogen :	Synthetic peptide from human protein at AA range: 20-50
Specificity :	The antibody detects endogenous CD52
Formulation :	Liquid in PBS containing 50% glycerol, 0.5% BSA and 0.02% sodium azide.
Source :	Rabbit
Dilution :	IHC-p 1:50-200, ELISA 1:10000-20000
Purification :	The antibody was affinity-purified from rabbit antiserum by affinity-chromatography using epitope-specific immunogen.
Concentration :	1 mg/ml
Storage_stability :	-20°C/1 year
Msds :	<a href="#">MSDS_Antibody.pdf</a>
Other_name :	CAMPATH-1 antigen (CDw52) (Cambridge pathology 1 antigen) (Epididymal secretory protein E5) (Human epididymis-specific protein 5) (He5) (CD antigen CD52)

## Product Images



Immunohistochemical analysis of paraffin-embedded Human-tonsil, antibody was diluted at 1:100



Immunohistochemical analysis of paraffin-embedded Human-spleen, antibody was diluted at 1:100