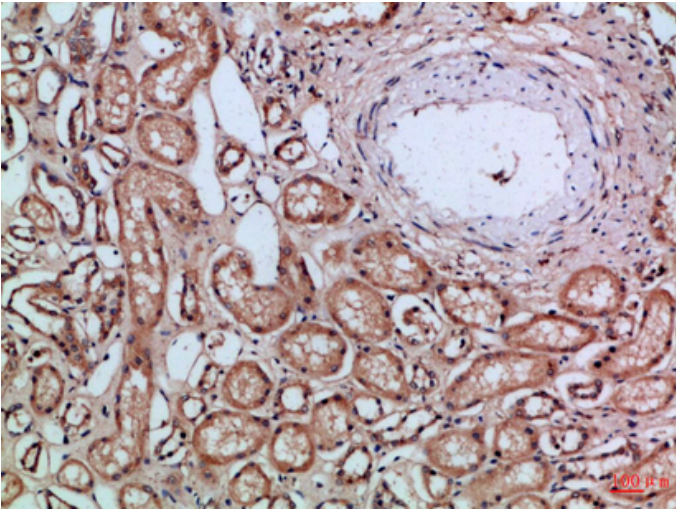




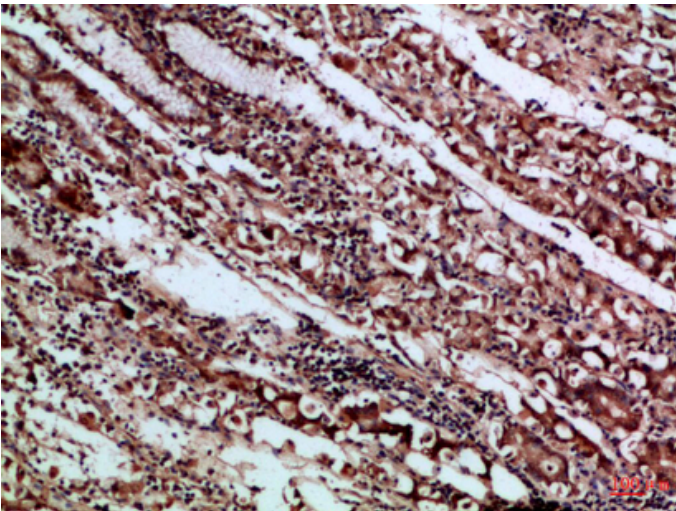
CD66a/b/c Polyclonal Antibody

Catalog_no :	<u>AT6030</u>
Applications :	<u>IHC-p,ELISA</u>
Reactivity :	<u>Human</u>
Category :	<u>抗原抗体</u>
Size :	<u>100µg/50µg/20µg</u>
Gene_name :	<u>CEACAM1/CEACAM6/CEACAM8</u>
Protein_name :	<u>Carcinoembryonic antigen-related cell adhesion molecule 1/6/8 (CD antigen CD66a/b/c)</u>
Humangene_id :	<u>634/4680/1088</u>
Humanswissprot_no :	<u>P13688/P40199/P31997</u>
Immunogen :	<u>Synthetic peptide from human protein at AA range: 130-190</u>
Specificity :	<u>The antibody detects endogenous CD66a/b/c</u>
Formulation :	<u>Liquid in PBS containing 50% glycerol, 0.5% BSA and 0.02% sodium azide.</u>
Source :	<u>Rabbit</u>
Dilution :	<u>IHC-p 1:50-200, ELISA 1:10000-20000</u>
Purification :	<u>The antibody was affinity-purified from rabbit antiserum by affinity-chromatography using epitope-specific immunogen.</u>
Concentration :	<u>1 mg/ml</u>
Storage_stability :	<u>-20°C/1 year</u>
Msds :	<u>MSDS_Antibody.pdf</u>

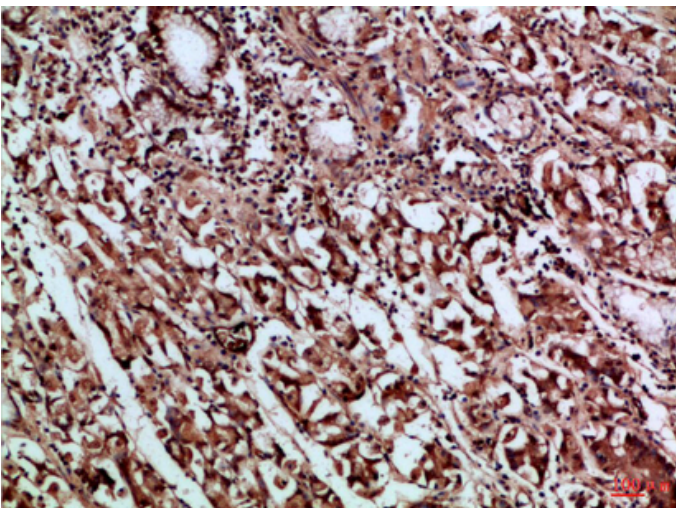
Product Images



Immunohistochemical analysis of paraffin-embedded Human-kidney, antibody was diluted at 1:100



Immunohistochemical analysis of paraffin-embedded Human-stomach, antibody was diluted at 1:100



Immunohistochemical analysis of paraffin-embedded Human-stomach, antibody was diluted at 1:100