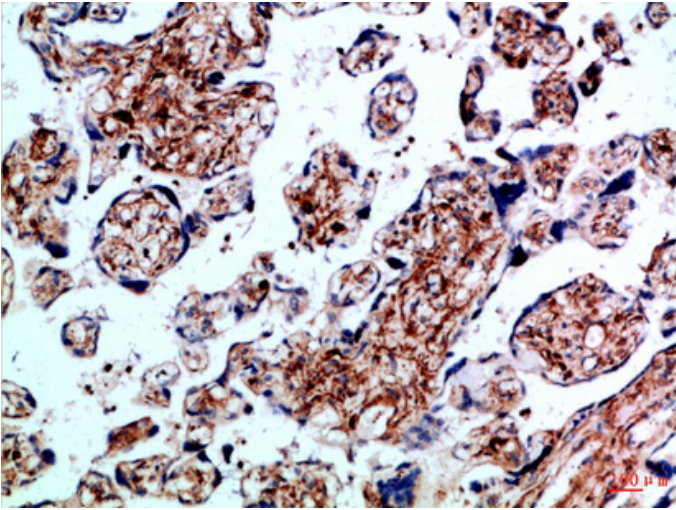




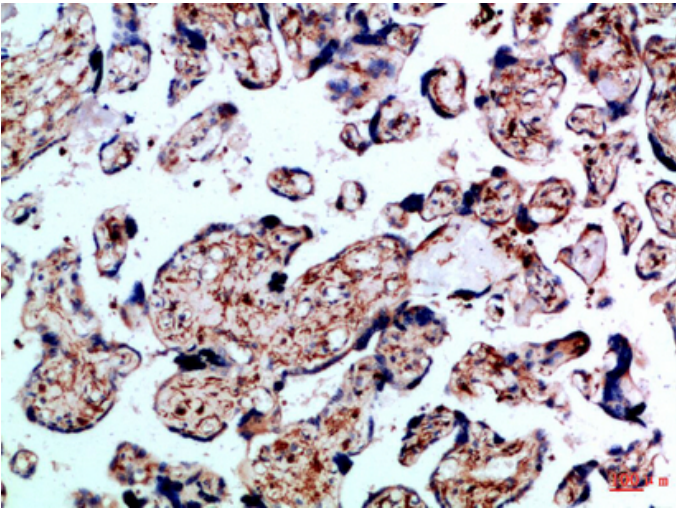
BMPR-IB Polyclonal Antibody

Catalog_no :	AT6035
Applications :	IHC-p,ELISA
Reactivity :	Human,Mouse
Category :	抗原抗体
Size :	100µg/50µg/20µg
Gene_name :	BMPR1B
Protein_name :	Bone morphogenetic protein receptor type-1B (BMP type-1B receptor) (BMPR-1B) (EC 2.7.11.30) (CD antigen CDw293)
Humangene_id :	658
Humanswissprot_no :	O00238
Immunogen :	Synthetic peptide from human protein at AA range: 21-70
Specificity :	The antibody detects endogenous BMPR-IB
Formulation :	Liquid in PBS containing 50% glycerol, 0.5% BSA and 0.02% sodium azide.
Source :	Rabbit
Dilution :	IHC-p 1:50-200, ELISA 1:10000-20000
Purification :	The antibody was affinity-purified from rabbit antiserum by affinity-chromatography using epitope-specific immunogen.
Concentration :	1 mg/ml
Storage_stability :	-20°C/1 year
Msds :	MSDS_Antibody.pdf
Other_name :	Bone morphogenetic protein receptor type-1B (BMP type-1B receptor) (BMPR-1B) (EC 2.7.11.30) (CD antigen CDw293)

Product Images



Immunohistochemical analysis of paraffin-embedded Human-placenta, antibody was diluted at 1:100



Immunohistochemical analysis of paraffin-embedded Human-placenta, antibody was diluted at 1:100